

WAAS CH <b>72917</b> <b>W07A</b>	APP CRS <b>074°</b>	Rwy Idg TDZE Apt Elev	<b>7299</b> <b>1460</b> <b>1478</b>
--	------------------------	-----------------------------	---

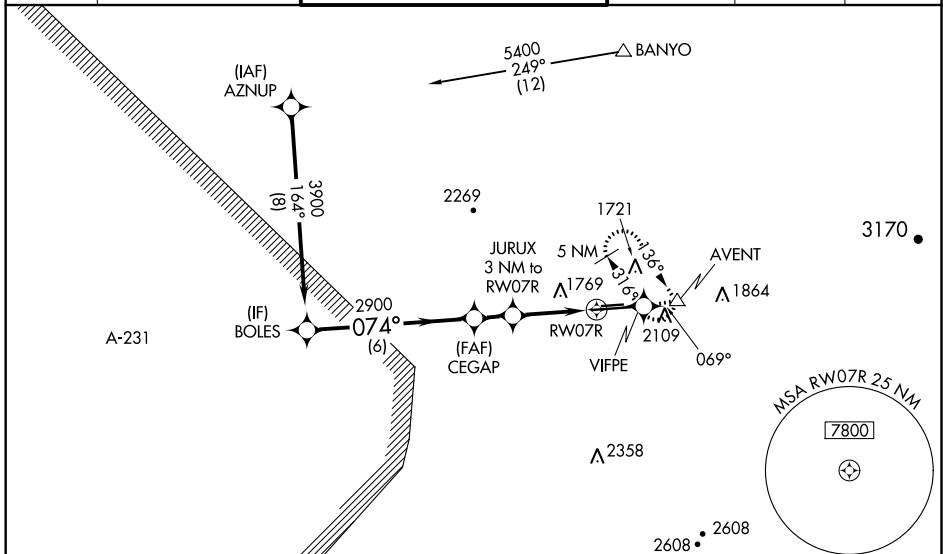
# RNAV (GPS) RWY 7R

PHOENIX DEER VALLEY (DVT)

**⚠** When VGSI inop, Circling Rwy 25R NA at night. Baro-VNAV NA when using Scottsdale altimeter setting. For uncompensated Baro-VNAV systems, LNAV/VNAV NA below -17°C (2°F) or above 45°C (113°F). DME/DME RNP-0.3 NA. VDP NA when using Scottsdale altimeter setting. When local altimeter setting not received, use Scottsdale altimeter setting: Increase LPV DA to 1822 and all visibilities 1/8 SM. Increase LNAV/VNAV DA to 2160, increase all MDA's 40 feet and increase Circling Cat B/C visibility 1/4 mile. Circling NA north of Rwy 7R-25L at night.

**MISSED APPROACH:** Climb to 5000 direct VIFPE and track 069° to AVENT and hold, continue climb-in-hold to 5000. When directed by ATC, continue climb-in-hold to 7000.

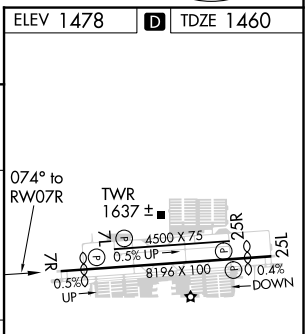
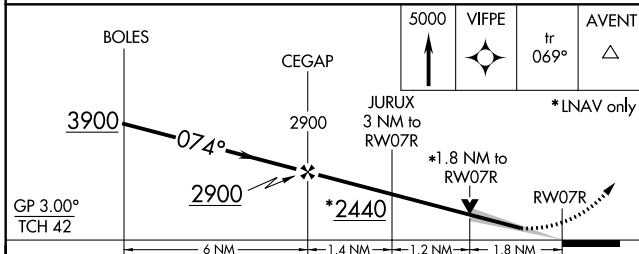
ATIS <b>126.5</b>	PHOENIX APP CON <b>120.7 239.0</b>	DEER VALLEY TOWER* <b>118.4</b> (070°-250°) (CTAF) <b>120.2</b> (251°-069°)	GND CON <b>121.8</b>	CLNC DEL <b>123.9</b>	UNICOM <b>122.95</b>
----------------------	---------------------------------------	---	-------------------------	--------------------------	-------------------------



SW-4, 25 FEB 2021 to 25 MAR 2021

SW-4, 25 FEB 2021 to 25 MAR 2021

ELEV 1478	<b>D</b> TDZE 1460
-----------	--------------------



CATEGORY	A	B	C	D
LPV DA		1795-1 1/8	335 (400-1 1/8)	
LNAV/VNAV DA		2133-2 1/2	673 (700-2 1/2)	
LNAV MDA	2060-1	600 (600-1)	2060-1 3/4	600 (600-1 3/4)
CIRCLING	2400-1 1/4 922 (1000-1 1/4)	2420-1 1/4 942 (1000-1 1/4)	2420-2 3/4 942 (1000-2 3/4)	2460-3 982 (1000-3)

MIRL Rwy 7L-25R and 7R-25L  
REIL Rwy 7L, 7R, 25L, and 25R