

APP CRS <b>254°</b>	Rwy Idg TDZE Apt Elev	<b>N/A</b> <b>N/A</b> <b>1478</b>
------------------------	-----------------------------	---

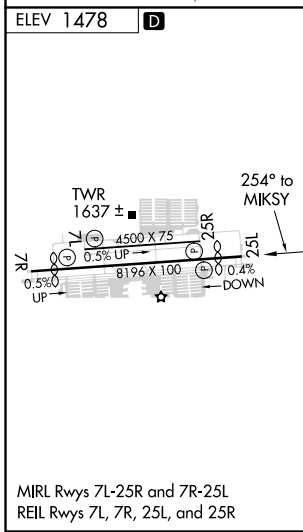
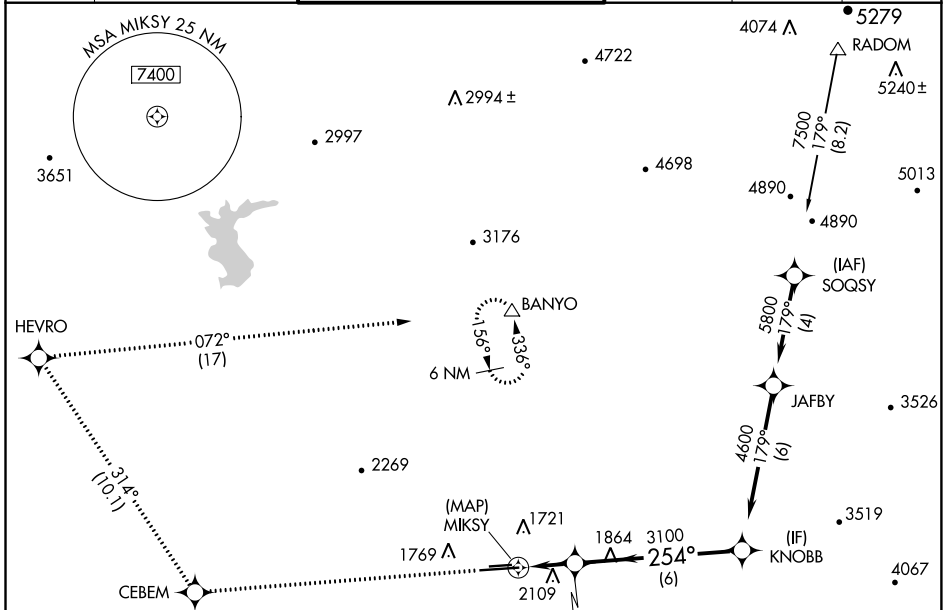
# RNAV (GPS)-B

PHOENIX DEER VALLEY (DVT)

**⚠** DME/DME RNP-0.3 NA. When VGSI inoperative, Circling to Rwy 25R NA at night. Circling not authorized at night north of Rwy 7R-25L. If local altimeter setting not received, use Phoenix Sky Harbor Intl altimeter setting and increase all MDAs 100 feet.

**MISSED APPROACH:** Climb to 6000 direct CEBEM and via 314° track to HEVRO, and right turn via 072° track to BANYO and hold.

ATIS <b>126.5</b>	PHOENIX APP CON <b>120.7 239.0</b>	DEER VALLEY TOWER ★ <b>118.4 (070°-250°) (CTAF)</b> <b>120.2 (251°-069°)</b>	GND CON <b>121.8</b>	CLNC DEL <b>123.9</b>	UNICOM <b>122.95</b>
----------------------	---------------------------------------	--	-------------------------	--------------------------	-------------------------



6000	CEBEM	314° tr	HEVRO	BANYO	4600
JERGI					Procedure Turn NA
MIKSY		3100		KNOBB	
2 NM		6 NM			
CATEGORY	A	B	C	D	
CIRCLING	2400-1¼ 922 (1000-1¼)	2420-1¼ 942 (1000-1¼)	2420-2¾ 942 (1000-2¾)	NA	

SW-4, 25 FEB 2021 to 25 MAR 2021

SW-4, 25 FEB 2021 to 25 MAR 2021