

VORTAC MAW <b>111.2</b> Chan <b>49</b>	APP CRS <b>351°</b>	Rwy Idg TDZE <b>298</b> Apt Elev <b>304</b>	<b>5000</b>
--	------------------------	---	-------------

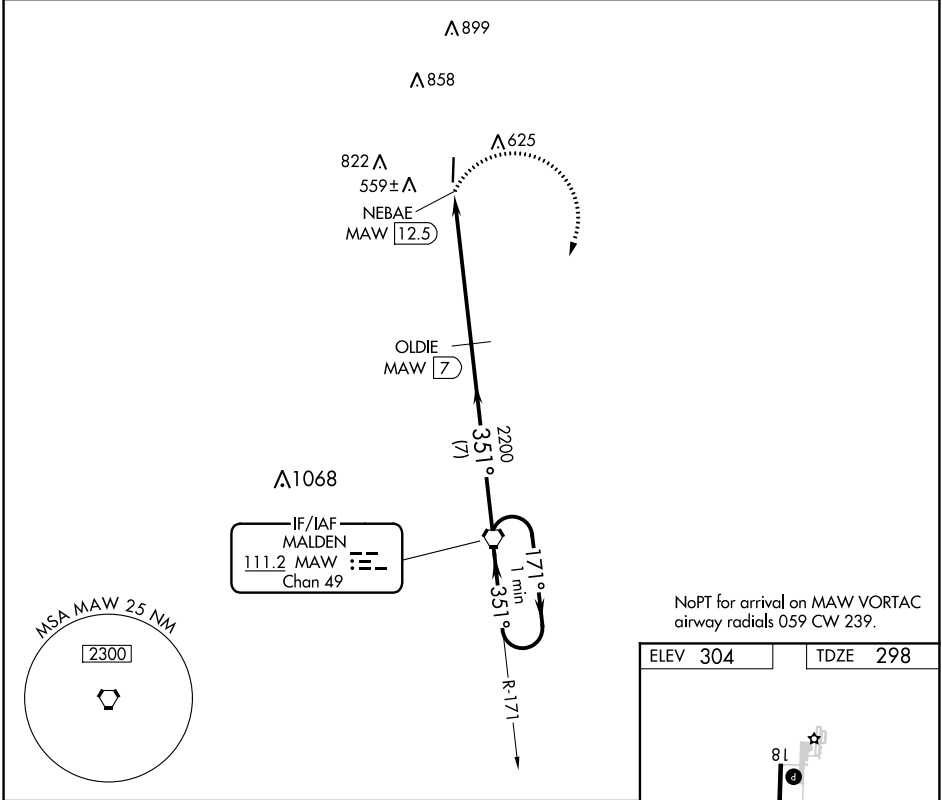
# VOR/DME RWY 36

DEXTER MUNI (DXE)

**NA** Use Poplar Bluff altimeter setting, when not received, use Cape Girardeau Rgnl altimeter setting and increase all MDA 40 feet and Circling Cat C/D visibility 1/4 mile.

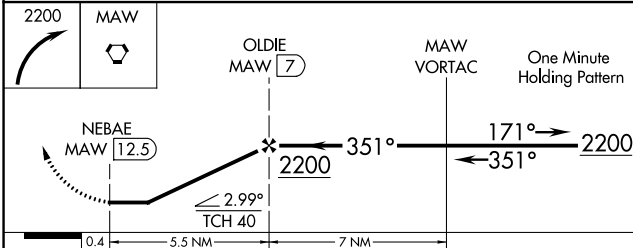
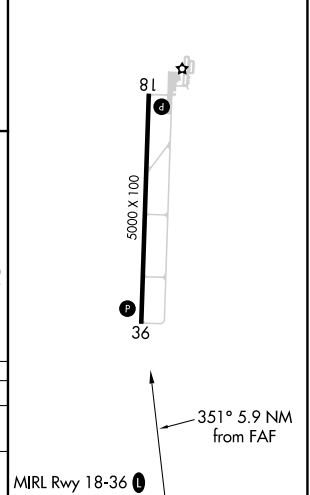
MISSED APPROACH: Climbing right turn to 2200 direct MAW VORTAC and hold.

POF ASOS <b>124.225</b>	MEMPHIS CENTER <b>133.65 292.15</b>	UNICOM <b>122.8 (CTAF)</b>
----------------------------	--	-------------------------------



NoPT for arrival on MAW VORTAC  
airway radials 059 CW 239.

ELEV 304	TDZE 298
----------	----------



CATEGORY	A	B	C	D
S-36	920-1	622 (700-1)	920-1 1/4 622 (700-1 3/4)	920-2 622 (700-2)
CIRCLING	960-1	656 (700-1)	1040-2 736 (800-2)	1180-2 3/4 876 (900-2 3/4)

MIRL Rwy 18-36

NC-3, 25 FEB 2021 to 25 MAR 2021

NC-3, 25 FEB 2021 to 25 MAR 2021