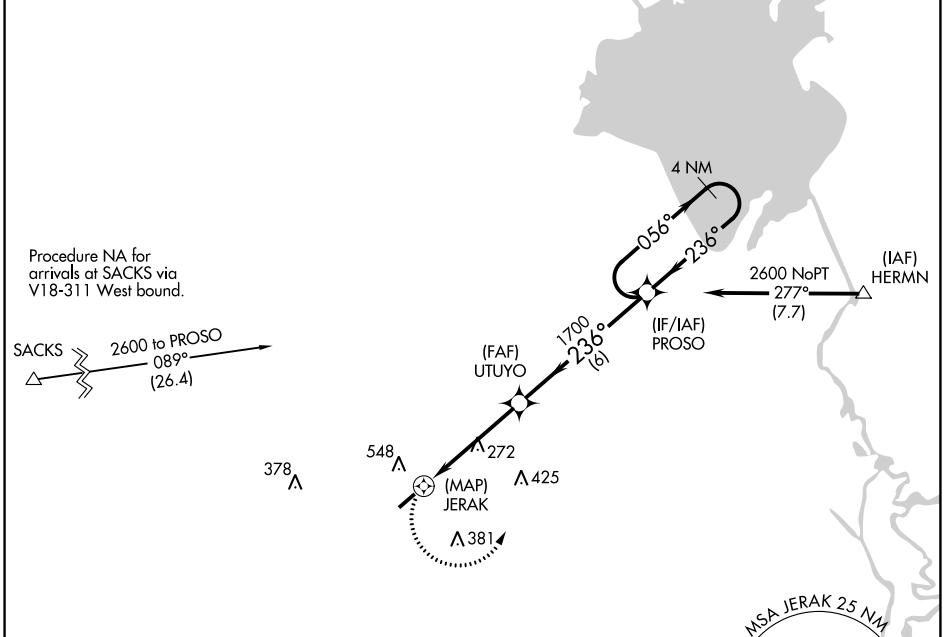


APP CRS	Rwy Idg	5000
236°	TDZE	56
	Apt Elev	56

RNAV (GPS) RWY 24

SUMMERVILLE (DYB)

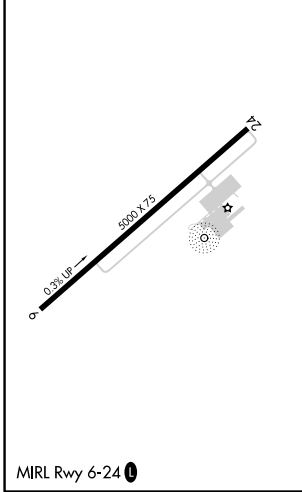
RNP APCH.		MISSED APPROACH: Climbing left turn to 2600 direct PROSO and hold.
<p>▼ Straight-in/Circling Rwy 24 NA at night. ▲ Rwy 24 helicopter visibility reduction below 1 SM NA.</p>		
AWOS-3 119.575	CHARLESTON APP CON 120.7 306.925	UNICOM 123.0 (CTAF) ①



SE-2, 25 FEB 2021 to 25 MAR 2021

SE-2, 25 FEB 2021 to 25 MAR 2021

ELEV	56	TDZE	56
------	----	------	----



<p>2600 PROSO VGSI and descent angles not coincident.</p>		4 NM Holding Pattern		
<p>JERAK</p> <p>UTUYO</p> <p>1700</p> <p>3.04° TCH 30</p>		<p>PROSO</p> <p>056°</p> <p>236°</p> <p>2600</p>		
CATEGORY	A	B	C	D
LNAV MDA	540-1	484 (500-1)	540-1 ³ / ₈ 484 (500-1 ³ / ₈)	NA
C CIRCLING	860-1 804 (900-1)	860-1 ¹ / ₄ 804 (900-1 ¹ / ₄)	860-2 ¹ / ₄ 804 (900-2 ¹ / ₄)	NA