

HI-ILS or LOC X RWY 16

LOC I-TYY 109.9	APCH CRS 164°	Rwy Idg 13,500 TDZE 1790 Arprt Elev 1790
---------------------------	-------------------------	---

JAL-2 [USAF]

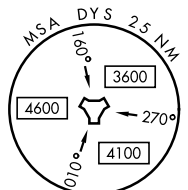
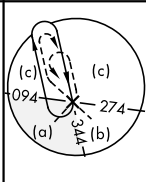
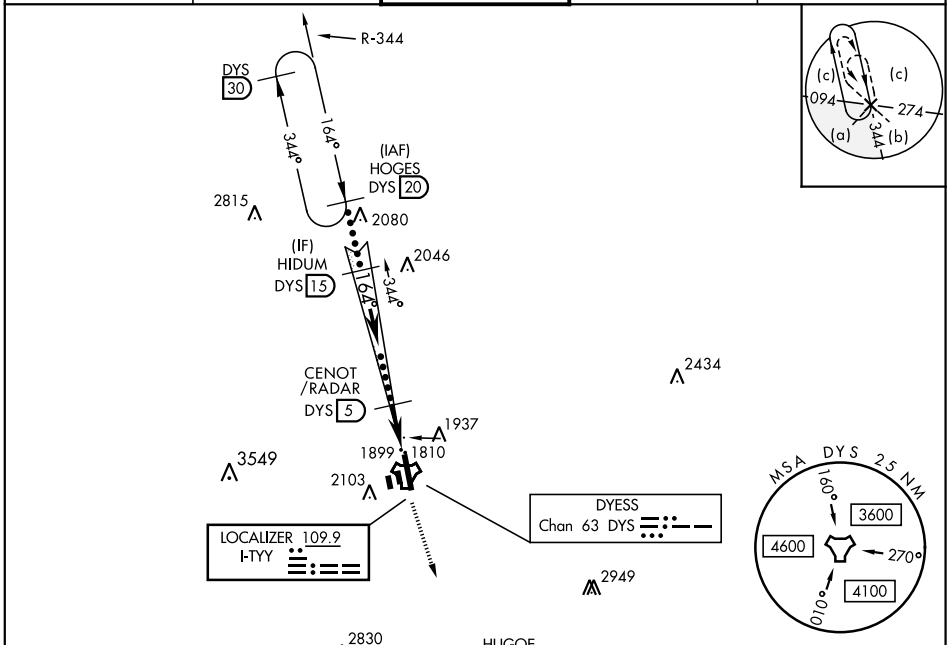
DYESS AFB (KDYS)

- * When ALS inop, increase CAT CDE RVR to 40 and vis to 3/4 mile.
- ** When ALS inop, increase CAT CDE RVR vis to 1 1/4 miles.
- *** Circling to other than Rwy 34 NA.



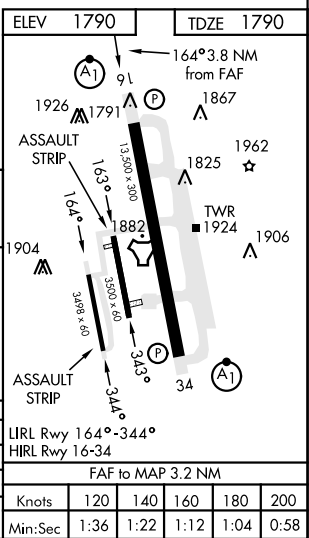
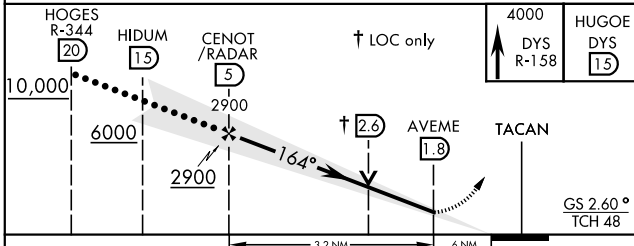
MISSED APPROACH: Climb to 4000 via DYSS TACAN R-158 to HUGOE and hold.

ATIS ★ 269.175	ABILENE APP CON 125.0 338.3 EAST 127.2 282.3 WEST	DYESS TOWER 133.0 257.675	GND CON 118.35 275.8	ASR
--------------------------	---	-------------------------------------	--------------------------------	-----



RADAR or DME REQUIRED

EMERG SAFE ALT 100 NM 4600



CATEGORY	C	D	E
S-ILS 16 *	1990/24	200	(200-1/2)
S-LOC 16 **	2220/40	430	(500-3/4)
*** CIRCLING	2460-1 3/4 670 (700-1 1/2)	2460-2 670 (700-2)	2460-2 1/4 670 (700-2 1/4)

ABILENE, TEXAS
Amdt 3 10NOV16

32° 25' N-99° 51' W

DYESS AFB (KDYS)

HI-ILS or LOC X RWY 16

SC-2, 25 FEB 2021 to 25 MAR 2021

SC-2, 25 FEB 2021 to 25 MAR 2021