

ABILENE, TEXAS

HI-TACAN X RWY 16

TACAN DYS Chan 63	APCH CRS 169°	Rwy ldg 13,500 TDZE 1790 Arprt Elev 1790
-----------------------------	-------------------------	---

JAL-2 [USAF]

DYESS AFB (KDYS)

* When ALS inop, increase CAT CDE vis to 1 1/4 miles.
 ** Circling to other than Rwy 34 NA

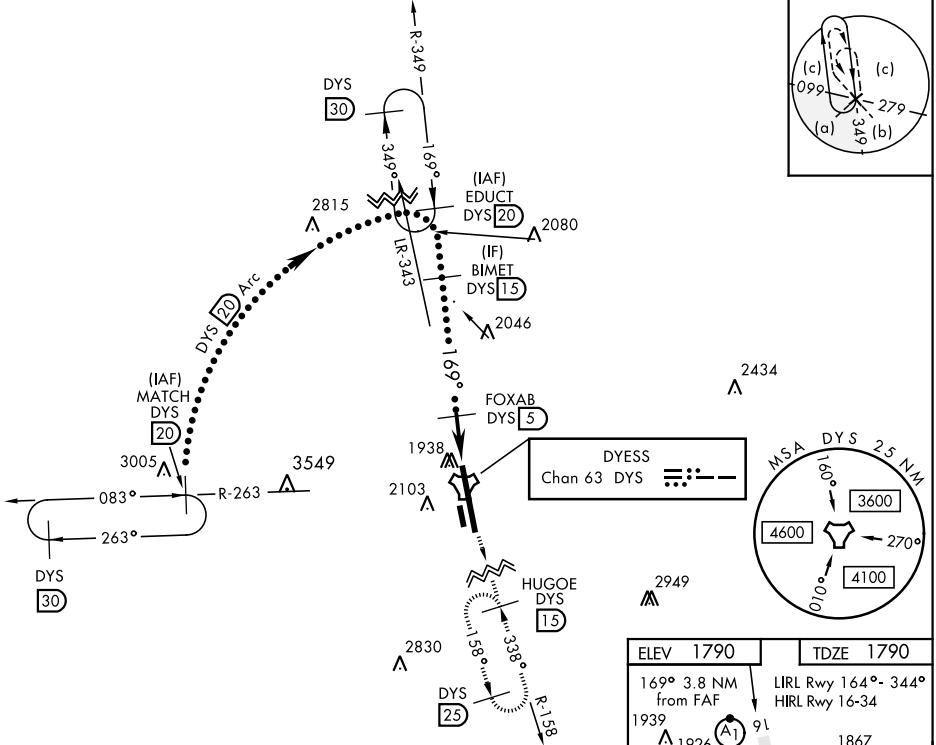


MISSED APPROACH: Climb to 4000 via
 DYS TACAN R-158 to HUGOE and hold.

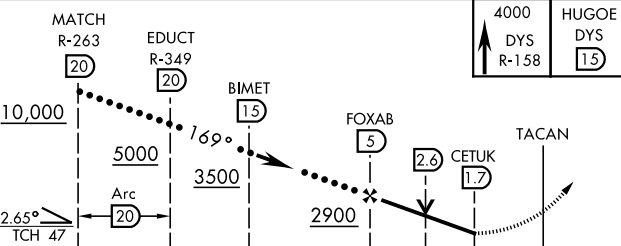
ATIS * 269.175	ABILENE APP CON 125.0 338.3 EAST 127.2 282.3 WEST	DYESS TOWER 133.0 257.675	GND CON 118.35 275.8	ASR
--------------------------	---	-------------------------------------	--------------------------------	-----

SC-2, 25 FEB 2021 to 25 MAR 2021

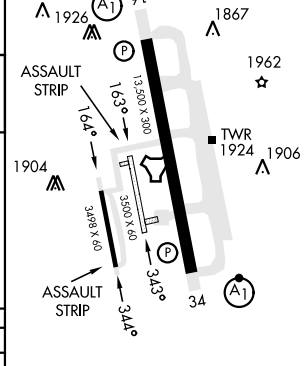
SC-2, 25 FEB 2021 to 25 MAR 2021



EMERG SAFE ALT 100 NM 4600



ELEV 1790	TDZE 1790
169° 3.8 NM from FAF	LIRL Rwy 164° - 344° HIRL Rwy 16-34
1939	1867



CATEGORY	C	D	E
S-16*	2220/40	430	(500-34)
CIRCLING**	2460-1 3/4 670 (700-1 3/4)	2460-2 670 (700-2)	2460-2 1/4 670 (700-2 1/4)

FAF to MAP 3.3 NM					
Knots	120	140	160	180	200
Min:Sec	1:39	1:25	1:14	1:06	0:59

ABILENE, TEXAS

32°25'N-99°51'W

DYESS AFB (KDYS)

Amdt 3 10NOV16

HI-TACAN X RWY 16