

# VOR/DME RWY 16

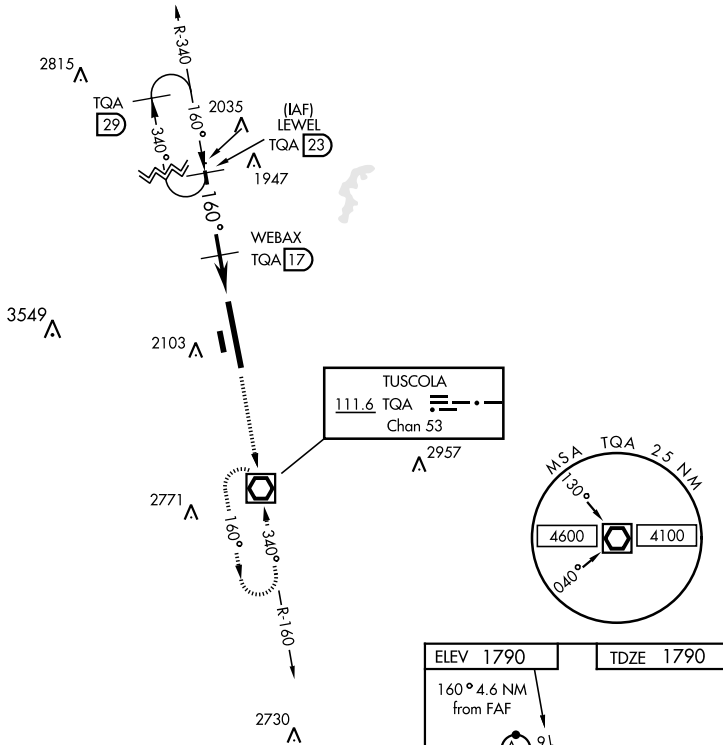
VOR/DME TQA <b>111.6</b> Chan <b>53</b>	APCH CRS <b>160°</b>	Rwy ldg <b>13,500</b> TDZE <b>1790</b> Arpr Elev <b>1790</b>
---	-------------------------	--

AL-2 [USAF]

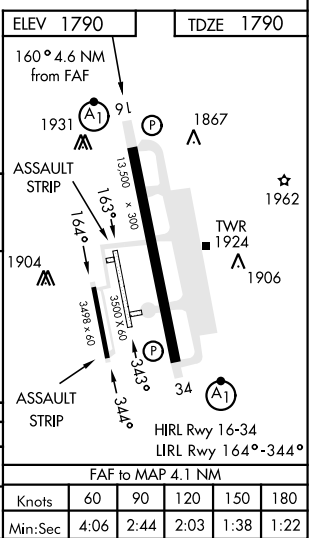
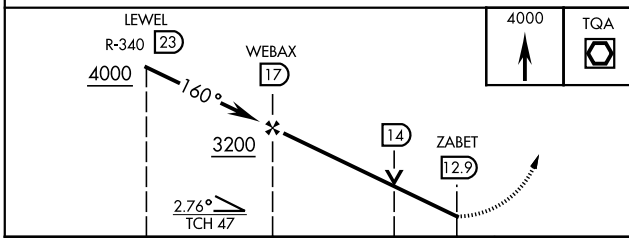
DYESS AFB (KDYS)

<p>* When ALS inop, increase CAT AB RVR to 55 and vis to 1 mile, CAT CDE vis to 1 3/8 miles. ** Circling to other than Rwy 34 NA.</p>	<p>ALSF-1 </p>	<p>MISSED APPROACH: Climb and maintain 4000 proceed direct TQA and hold.</p>
---	--------------------	--

<p>ATIS ★ <b>269.175</b></p>	<p>ABILENE APP CON <b>125.0 338.3</b> EAST <b>127.2 282.3</b> WEST</p>	<p>DYESS TOWER <b>133.0 257.675</b></p>	<p>GND CON <b>118.35 275.8</b></p>	<p>ASR</p>
----------------------------------	--	---	--	------------



EMERG SAFE ALT 100 NM 4600



CATEGORY	A	B	C	D	E
S-16 *	2300/24	510 (600-1/2)	2300/55	510 (600-1)	
CIRCLING **	2300-1 510 (600-1)	2320-1 530 (600-1)	2460-1 3/4 670 (700-1 3/4)	2460-2 670 (700-2)	2460-2 1/4 670 (700-2 1/4)

FAF to MAP 4.1 NM					
Knots	60	90	120	150	180
Min:Sec	4:06	2:44	2:03	1:38	1:22

# VOR/DME RWY 16

SC-2, 25 FEB 2021 to 25 MAR 2021

SC-2, 25 FEB 2021 to 25 MAR 2021