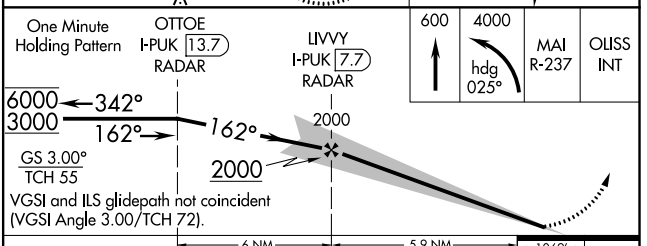
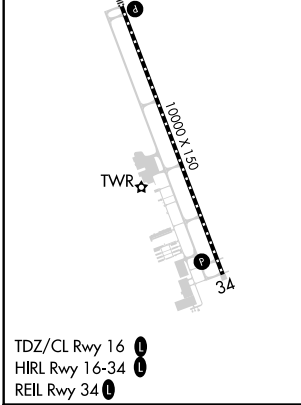
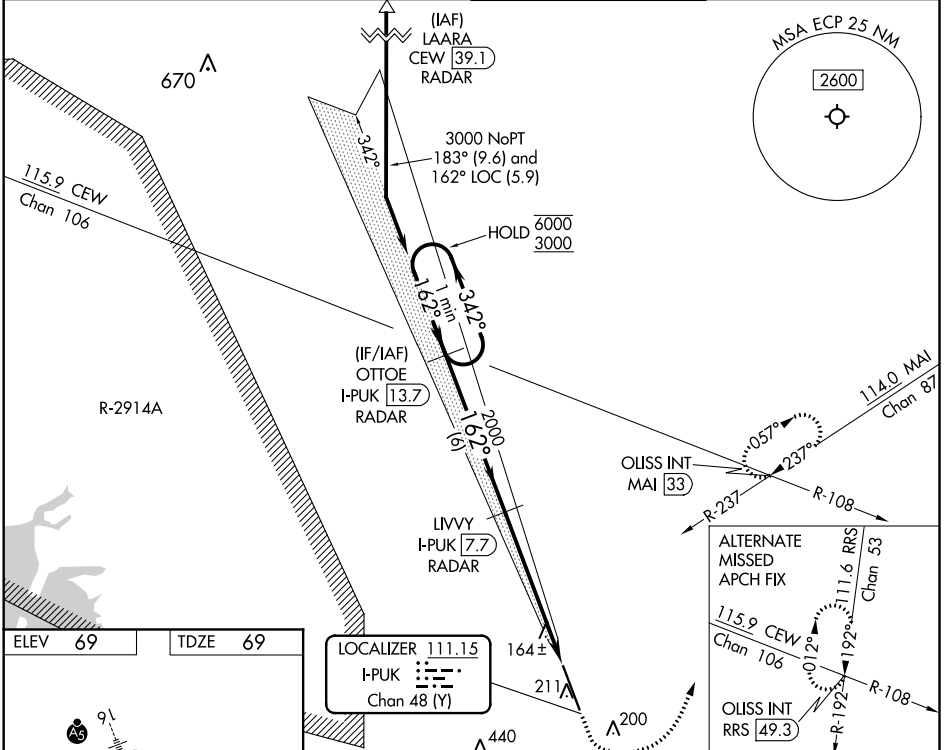


LOC/DME I-PUK 111.15 Chan 48 (Y)	APP CRS 162°	Rwy Idg TDZE Apt Elev	10000 69 69
---	------------------------	-----------------------------	--

ILS RWY 16 (SA CAT I & II)

NORTHWEST FLORIDA BEACHES INTL (ECP)

DME required for procedure entry. DME required.		MALS R	MISSED APPROACH: Climb to 600 then climbing left turn to 4000 on heading 025° and on MAI VORTAC R-237 to OLISS INT/MAI 33 DME and hold, continue climb-in-hold to 4000.
<p>SA CAT I: Requires specific OPSPEC, MSPEC, or LOA approval and use of HUD to DH.</p> <p>SA CAT II: Reduced lighting: requires specific OPSPEC, MSPEC, or LOA approval and use of autoland or HUD to touchdown.</p>			
ATIS 119.975	TYNDALL APP CON* 125.2 (N above 5000')	PANAMA CITY TOWER* 118.95 (CTAF) 0	GND CON 121.65



One Minute Holding Pattern	OTTOE I-PUK 13.7 RADAR	LIVVY I-PUK 7.7 RADAR	600	4000	MAI R-237	OLISS INT
6000 ← 342°	← 162° →	→ 162° →	↑	hdg 025°		
3000		2000				
GS 3.00° TCH 55						
VGS and ILS glidepath not coincident (VGS Angle 3.00/TCH 72).						
CATEGORY	A	B	C	D		
S-ILS 16	SA CAT I RA 151/14 150 DA 219					
S-ILS 16	SA CAT II RA 101/12 100 DA 169					

SA CATEGORY I & II ILS - SPECIAL AIRCREW & AIRCRAFT CERTIFICATION REQUIRED

SE-3, 25 FEB 2021 to 25 MAR 2021

SE-3, 25 FEB 2021 to 25 MAR 2021