

WAAS CH <b>45916</b> <b>W31A</b>	APP CRS <b>306°</b>	Rwy Idg <b>6025</b> TDZE <b>612</b> Apt Elev <b>620</b>
--	------------------------	---

# RNAV (GPS) RWY 31

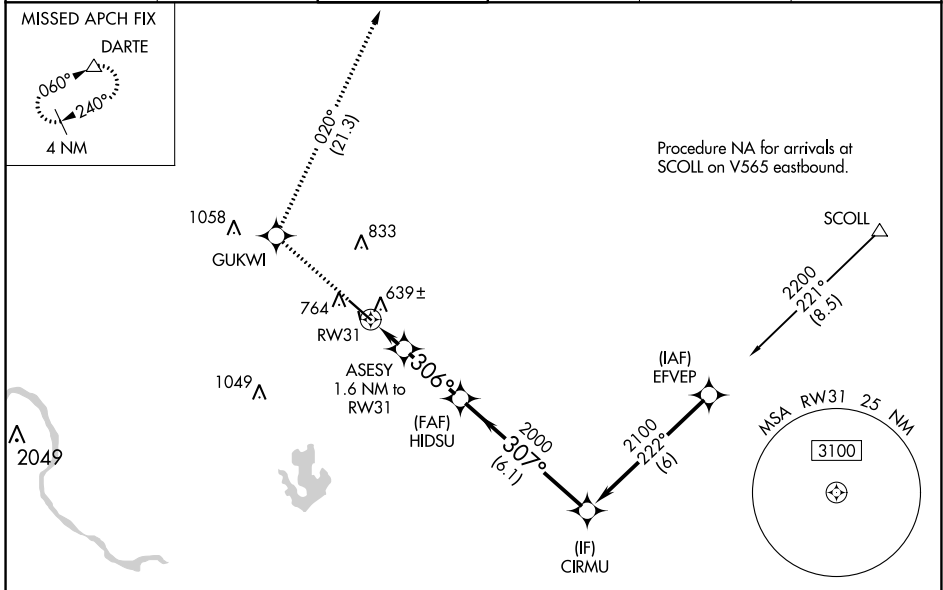
AUSTIN EXECUTIVE (EDC)

RNP APCH.

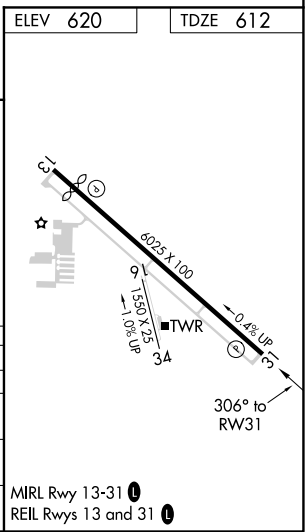
**⚠** Baro-VNAV NA when using Austin-Bergstrom Intl altimeter setting. For uncompensated Baro-VNAV systems, LNAV/VNAV NA below -16°C or above 54°C. When local altimeter setting not received, use Austin-Bergstrom Intl altimeter setting and increase all DA 42 feet; increase all MDA 60 feet. Increase LNAV/VNAV all Cats visibility 1/8 SM. VDP NA with Austin-Bergstrom Intl altimeter setting. Circling NA to Rwy 16, 34.

**⚠** MISSED APPROACH: Climb to 3500 direct GUKWI and on track 020° to DARTE and hold.

AWOS-3 <b>118.825</b>	APP CON <b>127.225 317.65</b>	EXECUTIVE TOWER* <b>120.3</b> (CTAF) <b>0</b>	GND CON <b>119.45</b>	CINC DEL <b>126.025</b> (when tower closed)	UNICOM <b>122.975</b>
--------------------------	----------------------------------	--	--------------------------	---	--------------------------



ELEV 620	TDZE 612			
3500	GUKWI	tr 020°	DARTE	CIRMU
*LNAV only.				
CATEGORY	A	B	C	D
LPV DA		812-3/4	200 (200-3/4)	
LNAV/VNAV DA		909-7/8	297 (300-7/8)	
LNAV MDA		900-1	288 (300-1)	
CIRCLING	1140-1 520 (600-1)	1160-1 540 (600-1)	1160-1 1/2 540 (600-1 1/2)	1220-2 600 (600-2)



SC-3, 25 FEB 2021 to 25 MAR 2021

SC-3, 25 FEB 2021 to 25 MAR 2021