

EDWARDS, CALIFORNIA

VOR/DME or TACAN RWY 5L

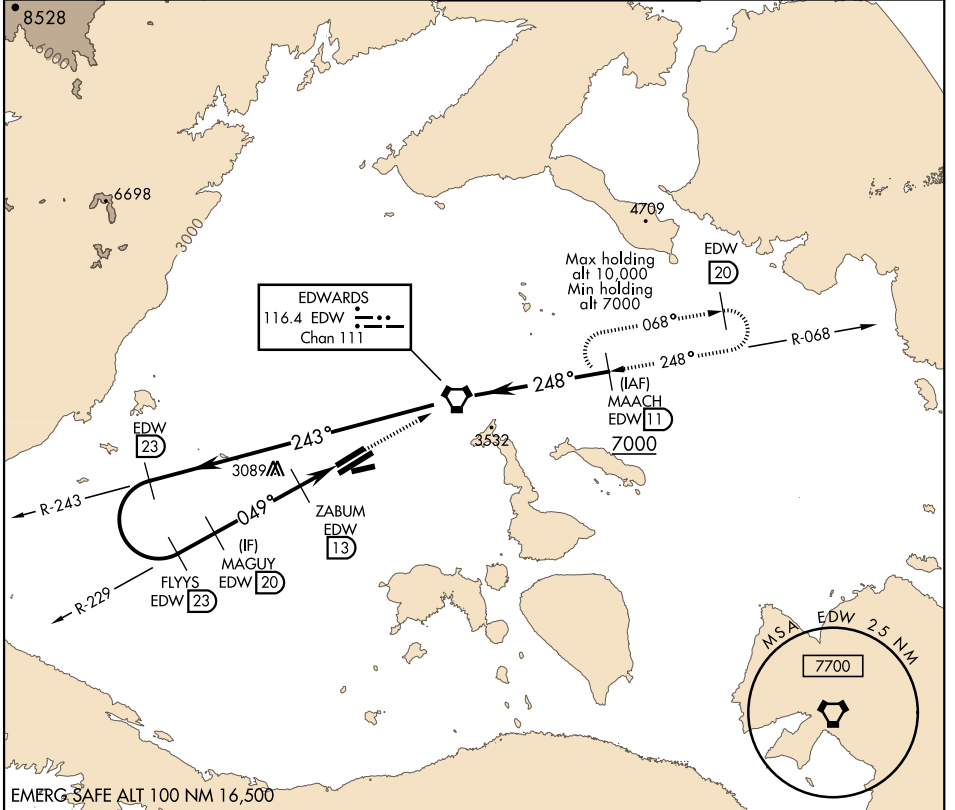
| | | |
|---|-------------------------|---|
| VORTAC EDW 116.4 Chan 111 | APCH CRS 049° | Rwy Idg 12,000 TDZE 2311 Arprt Elev 2311 |
|---|-------------------------|---|

AL-500 [USAF]

EDWARDS AFB (KEDW)

▽ *Circling not authorized NW of Rwy 5L-23R.
Circling not authorized at night to Rwy 5L-23R.
MISSED APPROACH: Proceed direct EDW VORTAC, then intercept EDW R-068 to MAACH and hold. Maintain 7000.
Missed approach requires use of RNAV or ATC RADAR monitoring.

| | | | |
|--------------------------------|--------------------------------------|--|-------------------------------|
| ATIS ★ 127.425 269.9 | SPORT APP CON 132.75 343.7 | TOWER ★ 120.7 (CTAF) 318.1 (CTAF) | GND CON 121.8 225.4 |
|--------------------------------|--------------------------------------|--|-------------------------------|



| | ELEV 2311 | | TDZE 2311 | | |
|--------------------|-----------|-------------|---------------------------------|--------|-------------|
| | | | REIL Rwy 23L HIRL Rwy 5R-23L | | |
| CATEGORY | A | B | C | D | E |
| S-5L | 2840-1 | 529 (600-1) | 2840-1½ | 529 | (600-1½) |
| Ⓢ CIRCLING* | 2880-1 | 569 (600-1) | 2880-1½ | 2880-2 | 569 (600-2) |

EDWARDS, CALIFORNIA

34°55'N-117°53'W

EDWARDS AFB (KEDW)

Amdt 2 21MAY20

VOR/DME or TACAN RWY 5L

SW-3, 25 FEB 2021 to 25 MAR 2021

SW-3, 25 FEB 2021 to 25 MAR 2021