

EDWARDS, CALIFORNIA

# VOR/DME or TACAN Y RWY 23L

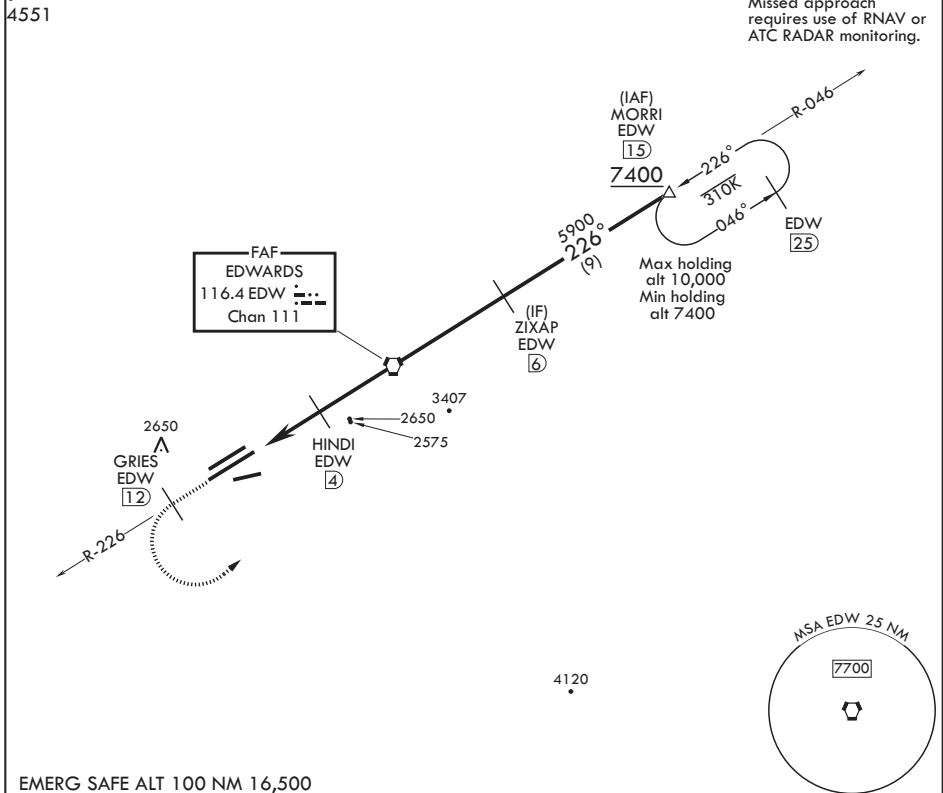
VORTAC EDW 116.4 Chan 111	APCH CRS 226°	Rwy ldg TDZE 15,024 2286 Arprt Elev 2311
---------------------------------	------------------	--

AL-500 (USAF)

EDWARDS AFB (KEDW)

**⚠** \* Circling not authorized NW of Rwy 5L-23R. Circling not authorized at night to Rwy 5L-23R. MISSED APPROACH: Climb to 7400. Track EDW VORTAC R-226 outbound to GRIES, then turn left direct MORRI and hold.

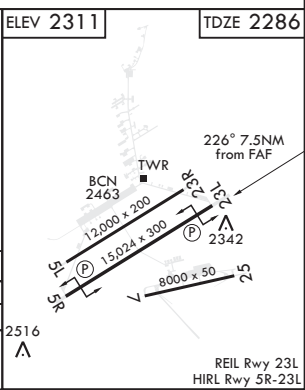
ATIS* 127.425 269.9	SPORT APP CON/DEP CON 132.75 343.7	TOWER* 120.7 (CTAF) 318.1 (CTAF)	GND CON 121.8 225.4
------------------------	---------------------------------------	-------------------------------------	------------------------



SW-3, 25 FEB 2021 to 25 MAR 2021

SW-3, 25 FEB 2021 to 25 MAR 2021

7400 EDW R-226	GRIES EDW (12)	MORRI EDW (15)	ZIXAP (6)	VORTAC	HINDI (4)	HUBNO (7)
VGSJ and descent angles not coincident (VGSJ Angle 3.00/TCH 49).						
CATEGORY	A	B	C	D	E	
S-23L	2640-1		354	(400-1)		
CIRCLING*	2880-1 569 (600-1)		2880-1½ 569 (600-1½)	2880-2 569 (600-2)		



EDWARDS, CALIFORNIA

34°55'N - 117°53'W

EDWARDS AFB (KEDW)

Amdt 2 23APR20

# VOR/DME or TACAN Y RWY 23L

REIL Rwy 23L  
HIRL Rwy 5R-23L