

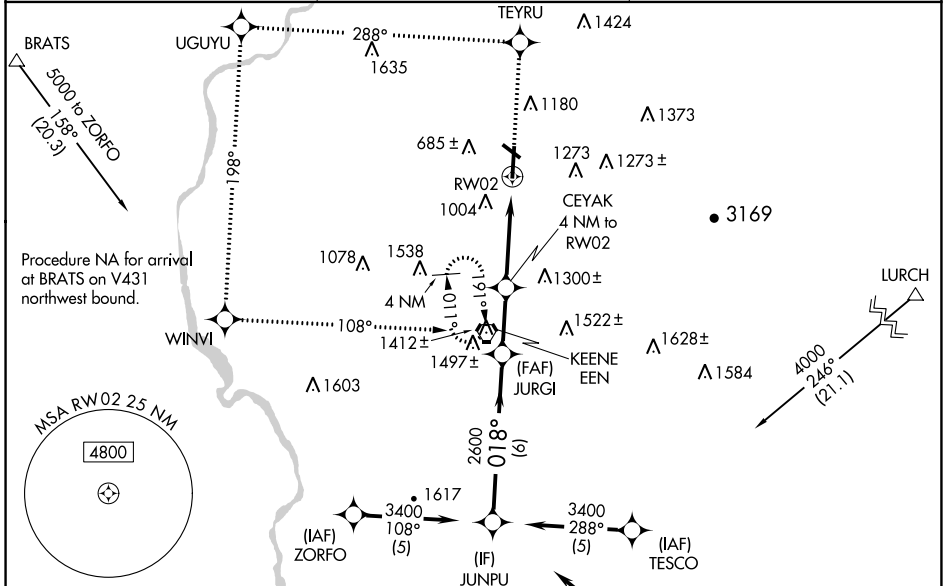
WAAS CH 65708 W02A	APP CRS 018°	Rwy Idg TDZE 488 Apt Elev 488	6201
--	------------------------	---	-------------

RNAV (GPS) RWY 2

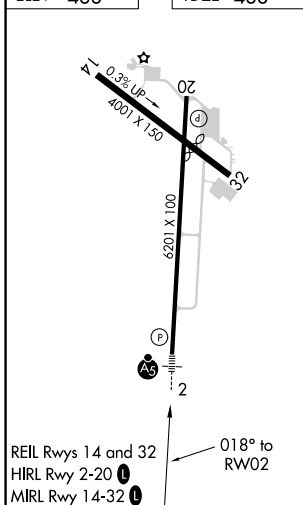
DILLANT-HOPKINS (EEN)

RNP APCH.	<p>When local altimeter setting not received, use Orange altimeter setting; increase LPV DA to 939; increase all MDAs 60 feet and visibility LNAV Cat C ¼ SM. For inoperative ALS, increase LPV visibility all Cats to 1½ SM and LNAV Cats A and B visibilities to 1¼ SM. For inoperative ALS when using Orange altimeter setting, increase LPV visibility all Cats to 1½ SM and LNAV Cat A visibility to 1¼ SM. Circling Rwy 20, 32 NA at night. Rwy 2 helicopter visibility reduction below ¾ SM NA.</p>	MALSR A5	MISSED APPROACH: Climb to 3000 direct TEYRU and on 288° track to UGUYU and on 198° track to WINVI and on 108° track to EEN VORTAC and hold.
-----------	--	-------------	--

AWOS-3PT 119.025	BOSTON CENTER 123.75 338.2	UNICOM 123.0 (CTAF) 0
----------------------------	--------------------------------------	---------------------------------



ELEV 488	TDZE 488
-----------------	-----------------



Procedure NA for arrival on GDM VOR/DME airway radials 263 CW 339.

(IAF) GARDNER GDM

Procedure Turn NA	↑	TEYRU	288° track	UGUYU	198° track	WINVI	108° track	EEN
JUNPU	JURGI	VGSI and RNAV glidepath not coincident (VGSI Angle 3.00/TCH 39).						
GP 3.00° TCH 43	3400	018°	2600	*1820	RWY 2	* LNAV only		
			6 NM	2.4 NM	4 NM			
CATEGORY	A	B	C	D				
LPV DA	884-1				396 (400-1)			
LNAV MDA	1380-1		892 (900-1)		1380-2¼		892 (900-2½)	
CIRCLING	1380-1¼		892 (900-1¼)		1480-3		992 (1000-3)	
			1480-1½		992 (1000-1½)		1640-3	
							1152 (1200-3)	

NE-1, 25 FEB 2021 to 25 MAR 2021

NE-1, 25 FEB 2021 to 25 MAR 2021