

VORTAC EEN <b>109.4</b> Chan <b>31</b>	APP CRS <b>024°</b>	Rwy Idg TDZE Apt Elev	<b>6201</b> <b>488</b> <b>488</b>
--	------------------------	-----------------------------	---

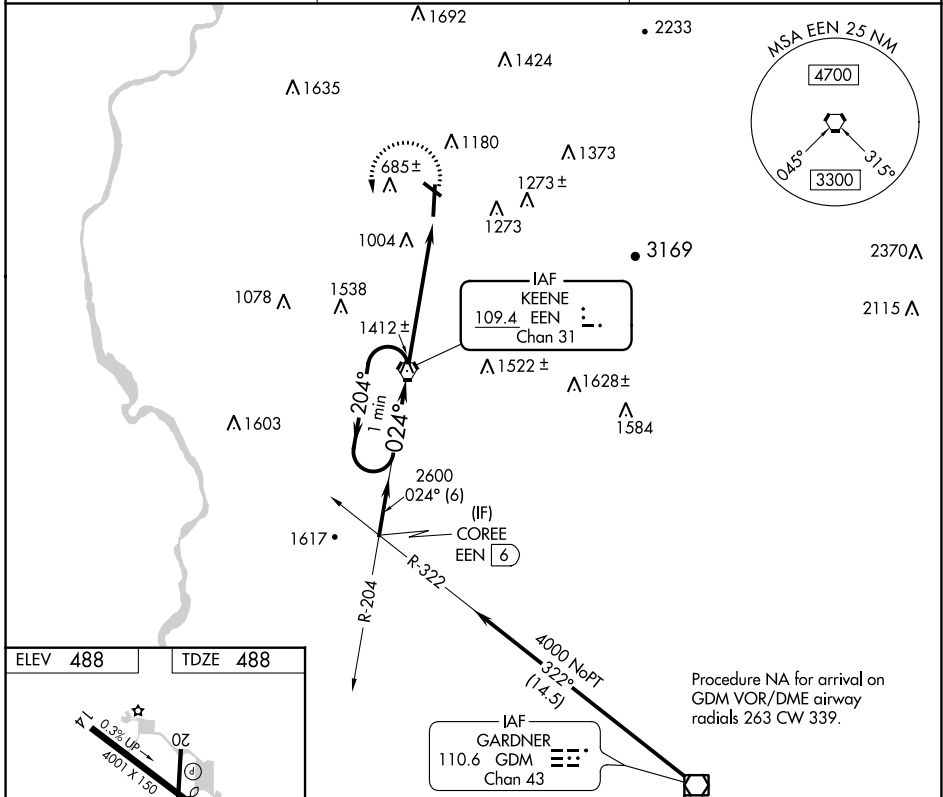
# VOR RWY 2

DILLANT-HOPKINS (EEN)

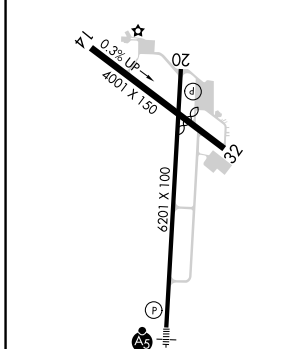
**⚠** Inoperative table does not apply. When local altimeter not received, use Orange altimeter setting and increase all MDAs 60 feet. Circling Rwy 20, 32 NA at night. Rwy 2 helicopter visibility reduction below 3/4 SM NA.

**MALSR** MISSED APPROACH: Climbing left turn to 2900 direct EEN VORTAC and hold.

AWOS-3PT <b>119.025</b>	BOSTON CENTER <b>123.75 338.2</b>	UNICOM <b>123.0 (CTAF) 0</b>
----------------------------	--------------------------------------	---------------------------------



ELEV <b>488</b>	TDZE <b>488</b>
-----------------	-----------------



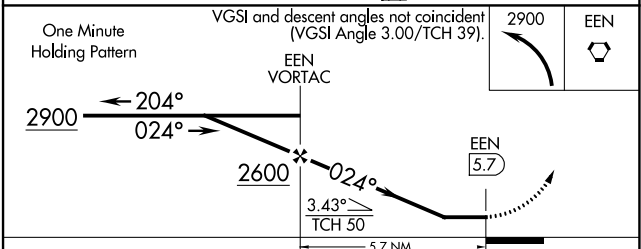
REIL Rws 14 and 32

HIRL Rwy 2-20

MIRL Rwy 14-32

FAF to MAP 5.7 NM

Knots	60	90	120	150	180
Min:Sec	5:42	3:48	2:51	2:17	1:54



CATEGORY	A	B	C	D
S-2	2100-1/4 1612 (1700-1/4)	2100-1/2 1612 (1700-1/2)	2100-3	1612 (1700-3)
CIRCLING	2100-1/4 1612 (1700-1/4)	2100-1/2 1612 (1700-1/2)	2100-3	1612 (1700-3)

NE-1, 25 FEB 2021 to 25 MAR 2021

NE-1, 25 FEB 2021 to 25 MAR 2021