

WAAS CH <b>63219</b> <b>W34A</b>	APP CRS <b>340°</b>	Rwy Idg TDZE Apt Elev	<b>5000</b> <b>586</b> <b>586</b>
--	------------------------	-----------------------------	---

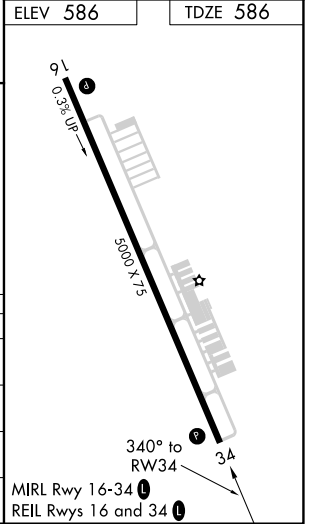
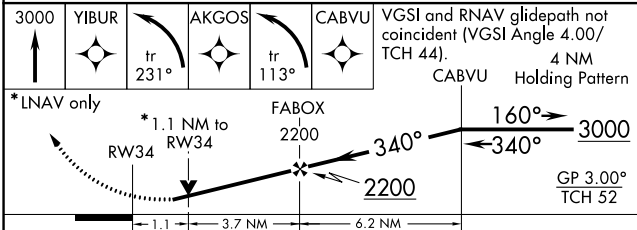
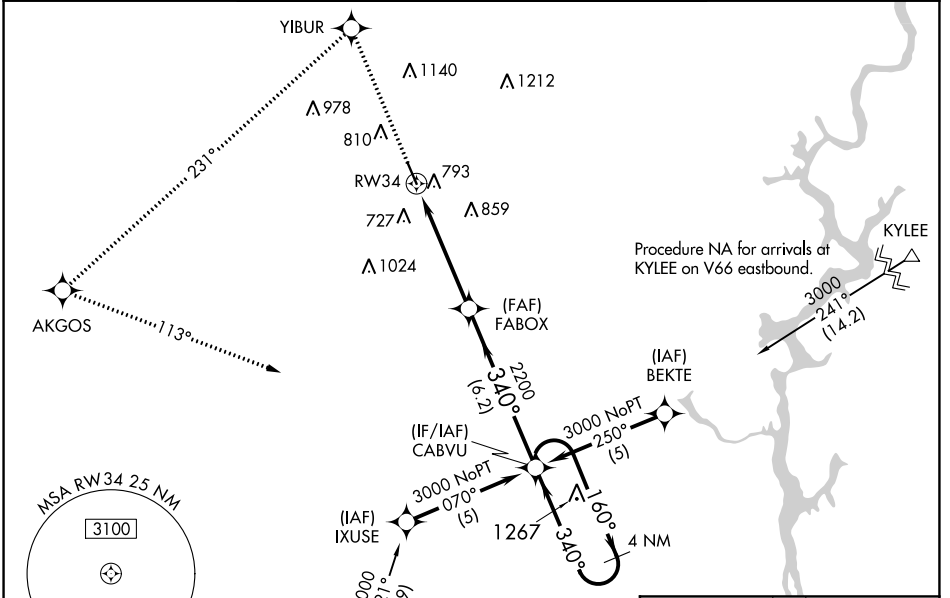
# RNAV (GPS) RWY 34

SHELBY COUNTY (E/E/T)

**⚠** DME/DME RNP-0.3 NA. Visibility reduction by helicopters NA. When local altimeter setting not received, use Birmingham altimeter setting and increase all DA 63 feet and MDA 80 feet; increase LPV all Cats, LNAV/VNAV all Cats, and Circling Cats C/D visibilities ¼ mile. Baro-VNAV NA when using Birmingham altimeter setting. For uncompensated Baro-VNAV systems, LNAV/VNAV NA below -16°C (4°F) or above 47°C (116°F). VDP NA with Birmingham altimeter setting.

**⚠** MISSED APPROACH: Climb to 3000 direct YIBUR and left turn on track 231° to AKGOS and left turn on track 113° to CABVU and hold.

ASOS <b>134.325</b>	BIRMINGHAM APP CON <b>123.8 256.8</b>	GCO <b>121.725</b>	UNICOM <b>122.7 (CTAF)</b>
------------------------	--	-----------------------	-------------------------------



CATEGORY	A	B	C	D
LPV DA		947-1¼	361 (400-1¼)	
LNAV/VNAV DA		1093-1¾	507 (600-1¾)	
LNAV MDA	1100-1	514 (600-1)	1100-1½ 514 (600-1½)	1100-1¾ 514 (600-1¾)
CIRCLING	1120-1	534 (600-1)	1120-1½ 534 (600-1½)	1220-2 634 (700-2)

SE-4, 25 FEB 2021 to 25 MAR 2021

SE-4, 25 FEB 2021 to 25 MAR 2021