

(BLTWY6.BLTWY) 19115

AL-197 (FAA)

ELLINGTON (EFD)
HOUSTON, TEXAS

BLTWY SIX DEPARTURE (RNAV)

ATIS
135.575 269.9
GND CON
121.6 275.8
ELLINGTON TOWER
126.05 253.5
HOUSTON DEP CON
134.45 284.0

**TOP ALTITUDE:
ASSIGNED BY ATC**

NOTE: RADAR required.
NOTE: DME/DME/IRU or GPS required.
NOTE: RNAV 1.

TAKEOFF MINIMUMS

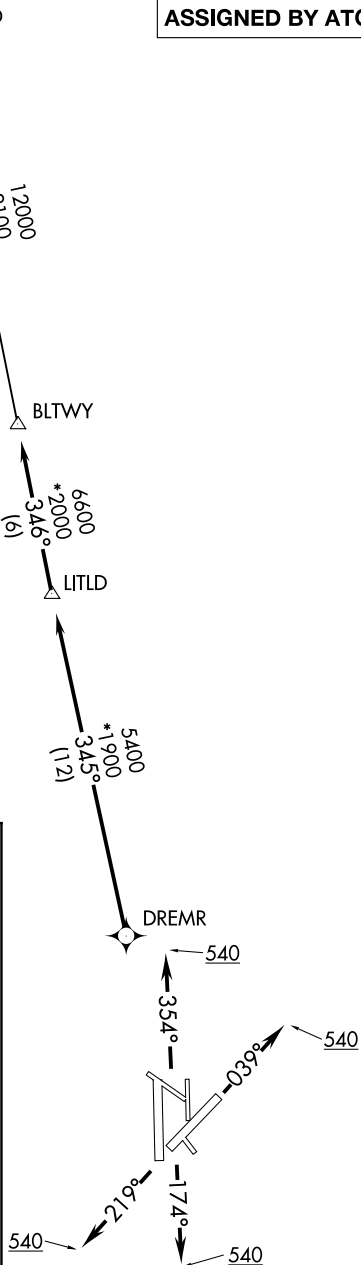
Rwys 4, 17L/R, 22, 35L/R:
Standard with minimum climb of 500' per NM to 540.

DEPARTURE ROUTE DESCRIPTION

TAKEOFF RWY 4: Climb heading 039° to 540 for
RADAR vectors to DREMR, thence
TAKEOFF RWYS 17L/R: Climb heading 174° to 540
for RADAR vectors to DREMR, thence
TAKEOFF RWY 22: Climb heading 219° to 540 for
RADAR vectors to DREMR, thence
TAKEOFF RWYS 35L/R: Climb heading 354° to 540
for RADAR vectors to DREMR, thence

...on track 345° to LITLD, then on track 346° to BLTWY,
then on (transition). Maintain ATC assigned altitude.
Expect filed altitude 10 minutes after departure.

CRIED TRANSITION (BLTWY6.CRIED)



NOTE: Chart not to scale.

BLTWY SIX DEPARTURE (RNAV)

(BLTWY6.BLTWY) 25APR19

HOUSTON, TEXAS
ELLINGTON (EFD)

SC-5, 25 FEB 2021 to 25 MAR 2021

SC-5, 25 FEB 2021 to 25 MAR 2021