

(INDIE7.INDIE) 19115

AL-197 (FAA)

ELLINGTON (EFD)  
HOUSTON, TEXAS

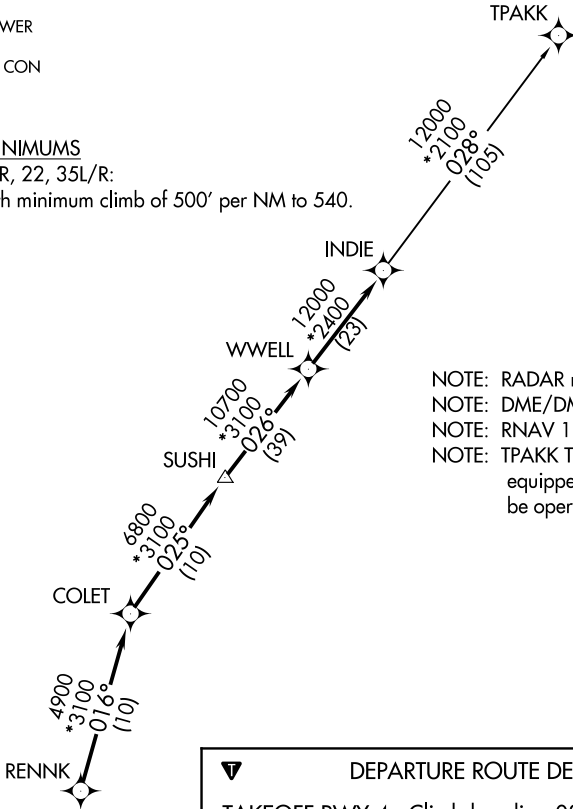
# INDIE SEVEN DEPARTURE (RNAV)

ATIS  
135.575 269.9  
GND CON  
121.6 275.8  
ELLINGTON TOWER  
126.05 253.5  
HOUSTON DEP CON  
134.45 284.0

**TOP ALTITUDE:  
ASSIGNED BY ATC**

### TAKEOFF MINIMUMS

Rwy 4, 17L/R, 22, 35L/R:  
Standard with minimum climb of 500' per NM to 540.



NOTE: RADAR required.  
 NOTE: DME/DME/IRU or GPS required.  
 NOTE: RNAV 1.  
 NOTE: TPAKK TRANSITION: For non GPS equipped aircraft TNV DME must be operational.



### DEPARTURE ROUTE DESCRIPTION

TAKEOFF RWY 4: Climb heading 039° to 540 for RADAR vectors to RENNK, thence . . .

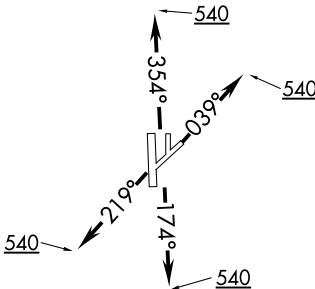
TAKEOFF RWYS 17L/R: Climb heading 174° to 540 for RADAR vectors to RENNK, thence . . .

TAKEOFF RWY 22: Climb heading 219° to 540 for RADAR vectors to RENNK, thence . . .

TAKEOFF RWYS 35L/R: Climb heading 354° to 540 for RADAR vectors to RENNK, thence . . .

. . . . on track 016° to COLET, then on track 025° to SUSHI, then on track 026° to WWELL, then on track 026° to INDIE, then on (transition). Maintain ATC assigned altitude. Expect filed altitude 10 minutes after departure.

TPAKK TRANSITION (INDIE7.TPAKK)



NOTE: Chart not to scale.

SC-5, 25 FEB 2021 to 25 MAR 2021

SC-5, 25 FEB 2021 to 25 MAR 2021

# INDIE SEVEN DEPARTURE (RNAV)

HOUSTON, TEXAS  
ELLINGTON (EFD)

(INDIE7.INDIE) 25APR19