

LOC I-FNF <b>110.1</b>	APP CRS <b>219°</b>	Rwy Idg TDZE Apt Elev	<b>8001</b> <b>31</b> <b>33</b>
---------------------------	------------------------	-----------------------------	---------------------------------------

# ILS Z or LOC Z RWY 22

ELLINGTON (EFD)

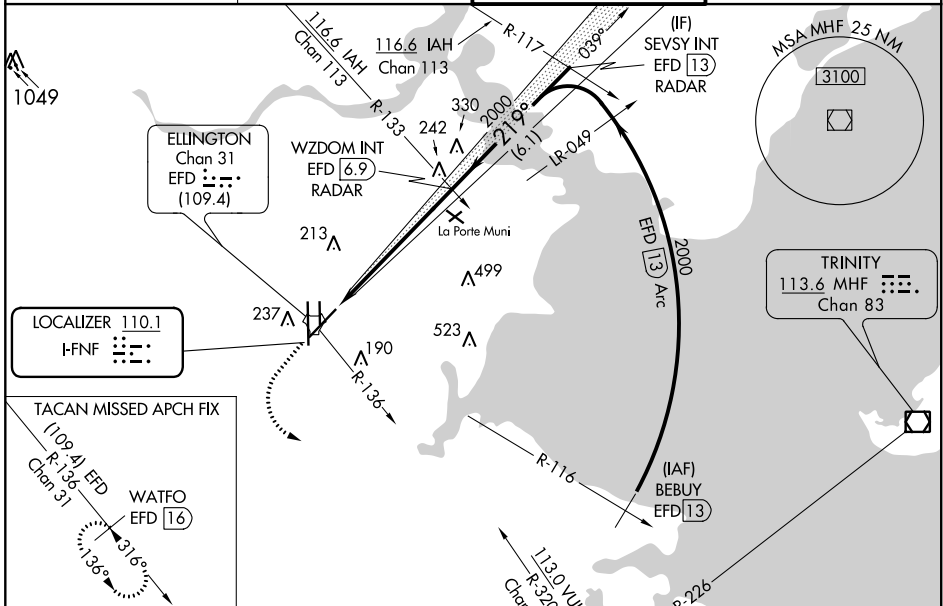
**RADAR required for procedure entry.**

**⚠ Circling NA west of Rwy 17R-35L. DME from EFD TACAN. Simultaneous reception of I-FNF and EFD DME required. For inop ALS, increase S-ILS 22 Cat E visibility to RVR 4000 and S-LOC 22 Cat E visibility to 1½ SM.**

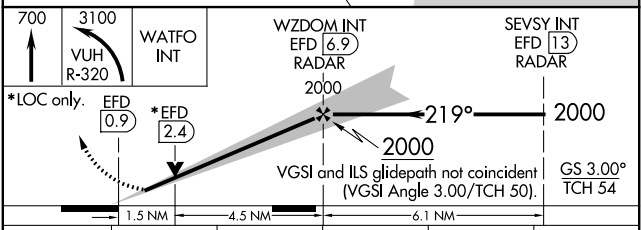
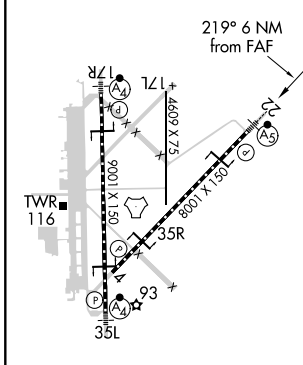
**MALSR**

**MISSED APPROACH:** Climb to 700 then climbing left turn to 3100 on VUH VOR/DME R-320 to WATFO INT/VUH 9.3 DME and hold. (TACAN aircraft climb to 700 then climbing left turn to 3100 on EFD TACAN R-136 to WATFO/EFD 16 DME and hold southeast, left turn, 316° inbound.)

ATIS <b>135.575 269.9</b>	HOUSTON APP CON <b>134.45 284.0</b>	ELLINGTON TOWER <b>126.05 253.5</b>	GND CON <b>121.6 275.8</b>
------------------------------	--	--	-------------------------------



ELEV 33	<b>D</b>	TDZE 31
---------	----------	---------



HIRL Rws 4-22 and 17R-35L TDZ/CL Rws 17R, 22 and 35L FAF to MAP 6 NM					
Knots	60	90	120	150	180
Min:Sec	6:00	4:00	3:00	2:24	2:00
<b>C</b> CIRCLING	560-1	527 (600-1)	580-1½ 547 (600-1½)	640-2 607 (700-2)	700-2¼ 667 (700-2¼)

SC-5, 25 FEB 2021 to 25 MAR 2021

SC-5, 25 FEB 2021 to 25 MAR 2021