

# MMALT FIVE DEPARTURE (RNAV)

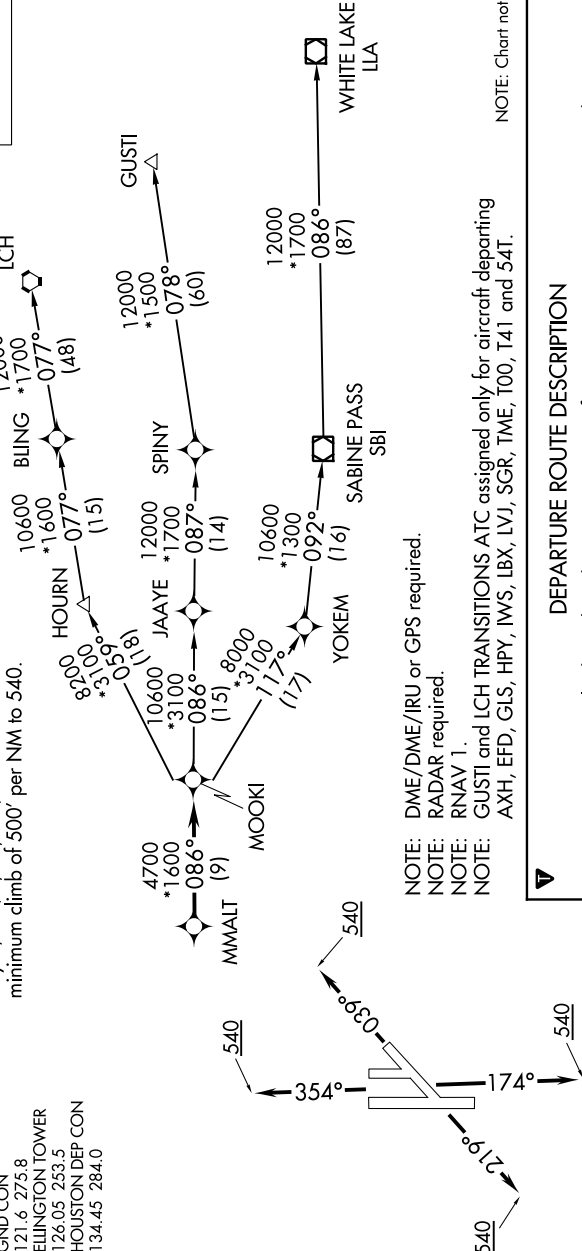
SC-5, 25 FEB 2021 to 25 MAR 2021

### TAKEOFF MINIMUMS

Rwy 4, 17L/R, 22, 35L/R: Standard with minimum climb of 500' per NM to 540.

ATIS 135.575 269.9  
GND CON 121.6 275.8  
ELLINGTON TOWER 126.05 253.5  
HOUSTON DEP CON 134.45 284.0

### TOP ALTITUDE: ASSIGNED BY ATC



NOTE: Chart not to scale.

NOTE: DME/DME/IRU or GPS required.

NOTE: RADAR required.

NOTE: RNAV 1.

NOTE: GUSTI and LCH TRANSITIONS ATC assigned only for aircraft departing AXH, EFD, GLS, HPY, IWS, LBX, LVJ, SGR, TME, T00, T41 and 54T.

### DEPARTURE ROUTE DESCRIPTION

**TAKEOFF RWY 4:** Climb on heading 039° to 540 for RADAR vectors to MMALT, thence. . . .

**TAKEOFF RWYS 17L/R:** Climb on heading 174° to 540 for RADAR vectors to MMALT, thence. . . .

**TAKEOFF RWY 22:** Climb on heading 219° to 540 for RADAR vectors to MMALT, thence. . . .

**TAKEOFF RWYS 35L/R:** Climb on heading 354° to 540 for RADAR vectors to MMALT, thence. . . .

. . . on track 086° to MOOKI, then on (transition). Maintain ATC assigned altitude.

Expect filed altitude 10 minutes after departure.

GUSTI TRANSITION (MMALT5.GUSTI)

LAKE CHARLES TRANSITION (MMALT5.LCH)

WHITE LAKE TRANSITION (MMALT5.ILA)

SC-5, 25 FEB 2021 to 25 MAR 2021