

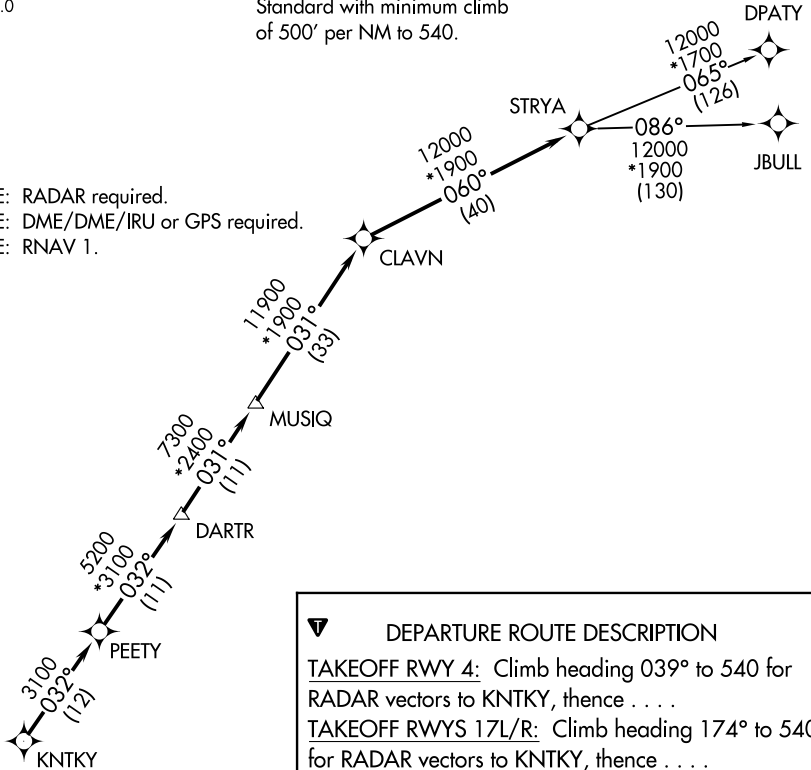
# STRYA SEVEN DEPARTURE (RNAV)

**TOP ALTITUDE: ASSIGNED BY ATC**

ATIS  
135.575 269.9  
GND CON  
121.6 275.8  
ELLINGTON TOWER  
126.05 253.5  
HOUSTON DEP CON  
134.45 284.0

**TAKEOFF MINIMUMS**  
Rwys 4, 17L/R, 22, 35L/R:  
Standard with minimum climb  
of 500' per NM to 540.

NOTE: RADAR required.  
NOTE: DME/DME/IRU or GPS required.  
NOTE: RNAV 1.



**DEPARTURE ROUTE DESCRIPTION**

**TAKEOFF RWY 4:** Climb heading 039° to 540 for RADAR vectors to KNTKY, then . . .

**TAKEOFF RWYS 17L/R:** Climb heading 174° to 540 for RADAR vectors to KNTKY, then . . .

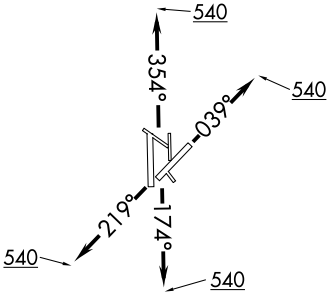
**TAKEOFF RWY 22:** Climb heading 219° to 540 for RADAR vectors to KNTKY, then . . .

**TAKEOFF RWYS 35L/R:** Climb heading 354° to 540 for RADAR vectors to KNTKY, then . . .

. . . on track 032° to PEETY, then on track 032° to DARTR, then on track 031° to MUSIQ, then on track 031° to CLAVN, then on track 060° to STRYA, then on (transition). Maintain ATC assigned altitude. Expect filed altitude 10 minutes after departure.

**DPATY TRANSITION (STRYA7.DPATY)**

**JBULL TRANSITION (STRYA7.JBULL)**



NOTE: Chart not to scale.

SC-5, 25 FEB 2021 to 25 MAR 2021

SC-5, 25 FEB 2021 to 25 MAR 2021

# STRYA SEVEN DEPARTURE (RNAV)

(STRYA7.STRYA) 25APR19

HOUSTON, TEXAS  
ELLINGTON (EFD)