

(STYCK7.STYCK) 19115

AL-197 (FAA)

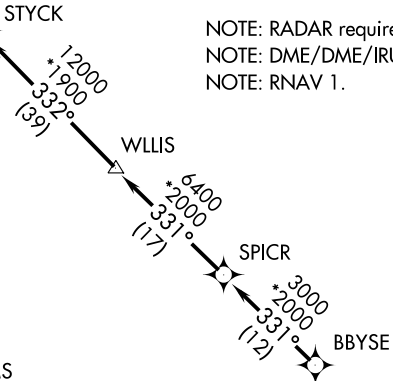
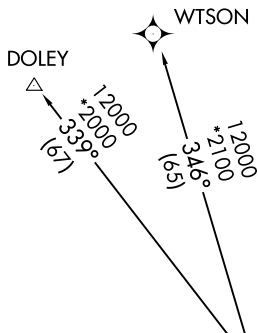
# STYCK SEVEN DEPARTURE (RNAV)

ELLINGTON (EFD)

HOUSTON, TEXAS

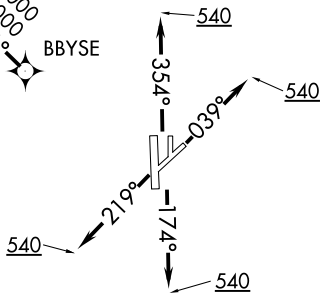
ATIS  
 135.575 269.9  
 GND CON  
 121.6 275.8  
 ELLINGTON TOWER  
 126.05 253.5  
 HOUSTON DEP CON  
 134.45 284.0

**TOP ALTITUDE:  
ASSIGNED BY ATC**



NOTE: RADAR required.  
 NOTE: DME/DME/IRU or GPS required.  
 NOTE: RNAV 1.

**TAKEOFF MINIMUMS**  
 Rwys 4, 17L/R, 22, 35L/R:  
 Standard with minimum  
 climb of 500' per NM to 540.



NOTE: Chart not to scale.

SC-5, 25 FEB 2021 to 25 MAR 2021

SC-5, 25 FEB 2021 to 25 MAR 2021



## DEPARTURE ROUTE DESCRIPTION

**TAKEOFF RWY 4:** Climb heading 039° to 540 for RADAR vectors to BBYSE, thence. . .  
**TAKEOFF RWYS 17L/R:** Climb heading 174° to 540 for RADAR vectors to BBYSE, thence. . .  
**TAKEOFF RWY 22:** Climb heading 219° to 540 for RADAR vectors to BBYSE, thence. . .  
**TAKEOFF RWYS 35L/R:** Climb heading 354° to 540 for RADAR vectors to BBYSE, thence. . .  
 . . . on track 331° to SPICR, then on track 331° to WLLIS, then on track 332° to STYCK, then on  
 (transition). Maintain ATC assigned altitude. Expect filed altitude 10 minutes after departure.

DOLEY TRANSITION (STYCK7.DOLEY)  
WTSON TRANSITION (STYCK7.WTSON)

# STYCK SEVEN DEPARTURE (RNAV)

(STYCK7.STYCK) 25APR19

HOUSTON, TEXAS  
ELLINGTON (EFD)