

VOR/DME JVL 114.3 Chan 90	APP CRS 276°	Rwy Idg TDZE Apt Elev	5000 1070 1086
---	------------------------	-----------------------------	---

VOR/DME RWY 30

MONROE MUNI (EFT)

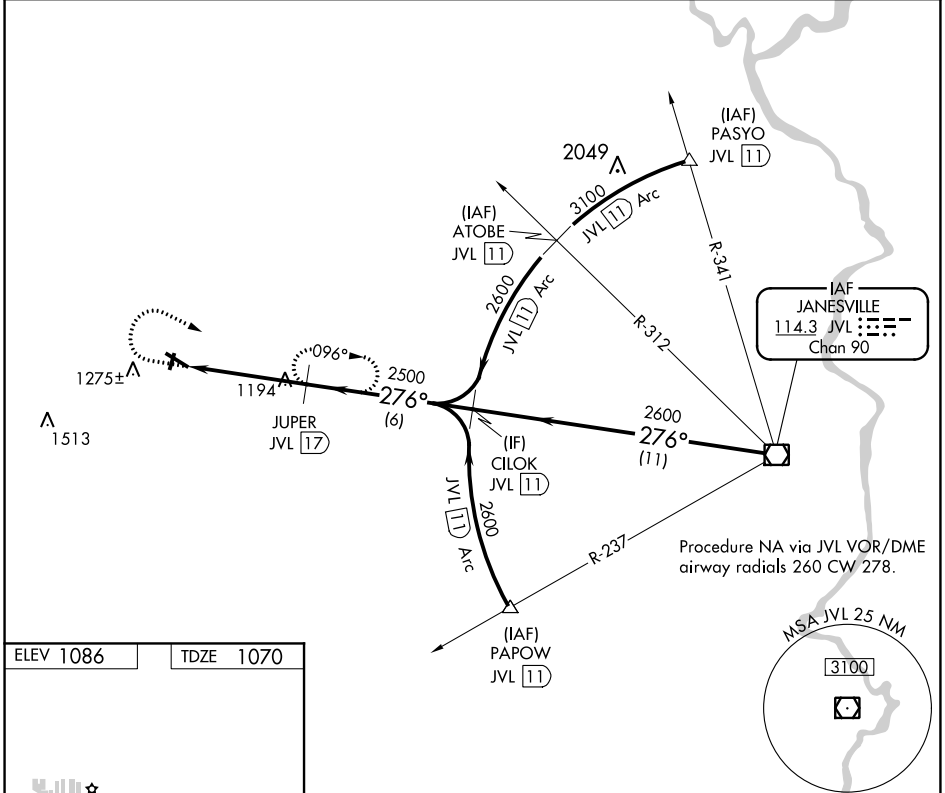
⚠ When local altimeter setting not received, use Albertus altimeter setting and increase all MDA 100 feet, increase Circling Cat C visibility ¼ mile. Helicopter visibility reduction below ¾ SM NA.

MISSED APPROACH: Climb to 1800 then climbing right turn to 2600 via JVL VOR/DME R-276 to JUPER/JVL 17 DME and hold.

AWOS-3
118.375

ROCKFORD APP CON
126.0 327.0

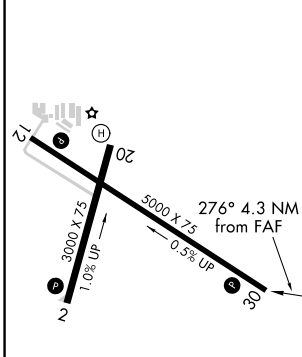
UNICOM
123.05 (CTAF)



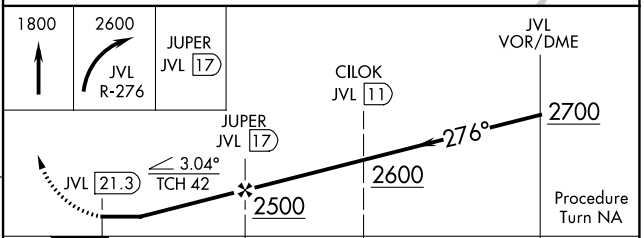
EC-3, 25 FEB 2021 to 25 MAR 2021

EC-3, 25 FEB 2021 to 25 MAR 2021

ELEV 1086	TDZE 1070
-----------	-----------



MIRL Rwy 12-30 and 2-20
REIL Rwy 2, 12, 20 and 30



CATEGORY	A	B	C	D
S-30	1460-1 390 (400-1)	1460-1¼ 390 (400-1¼)	1460-1½ 390 (400-1½)	1460-1¾ 390 (400-1¾)
CIRCLING	1540-1 454 (500-1)	1640-1¼ 554 (600-1¼)	1640-1½ 554 (600-1½)	1640-2 554 (600-2)