

HI TACAN Z RWY 18

TACAN DWG Chan 2	APCH CRS 180°	Rwy ldg THRE Arprt Elev 8025 189 195	JAL-699 [USAF]	DUKE FLD (EGLIN AF AUX NR3)	(KEGI)
----------------------------	-------------------------	--------------------------------------------------------------------------	----------------	-----------------------------	--------

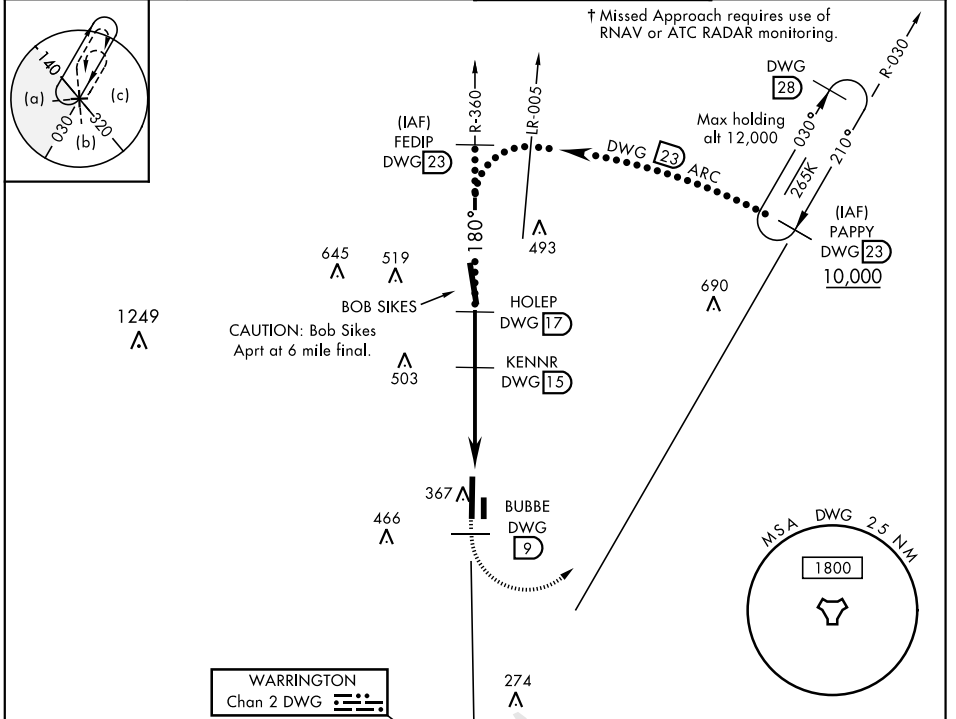
* When ALS inop, increase vis to 1½ miles.



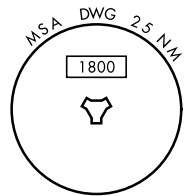
† MISSED APPROACH: Climb on DWG R-360 to 9 DME (BUBBE), then climbing left turn to 2300 direct DWG R-030/23DME (PAPPY) and hold.

ATIS ★ 244.575	EGLIN APP CON 125.1 281.45 (271° - 089°) 132.1 360.6 (090° - 270°)	DUKE TOWER ★ 133.2 290.425	GND CON 123.25 251.125
--------------------------	----------------------------------------------------------------------------------------	--------------------------------------	----------------------------------

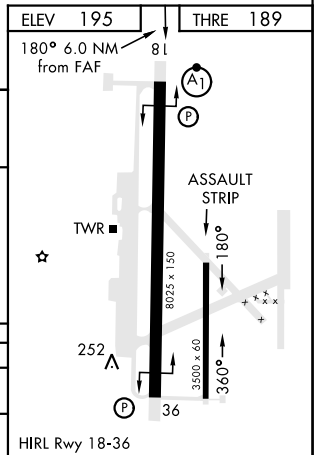
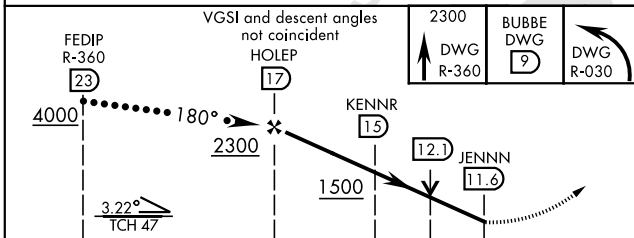
† Missed Approach requires use of RNAV or ATC RADAR monitoring.



WARRINGTON
Chan 2 DWG



EMERG SAFE ALT 100 NM 3600



CATEGORY	C	D	E
S-18*	560/35	371 (400-½)	
CIRCLING	700-1½ 505 (600-1½)	820-2 625 (700-2)	840-2¼ 645 (700-2¼)

HI TACAN Z RWY 18

SE-3, 25 FEB 2021 to 25 MAR 2021

SE-3, 25 FEB 2021 to 25 MAR 2021