

# ILS or LOC RWY 18

LOC I-EGI <b>111.7</b>	APCH CRS <b>183°</b>	Rwy Ldg <b>8025</b> THRE <b>189</b> Arprt Elev <b>195</b>
---------------------------	-------------------------	--

AL-699 [USAF]

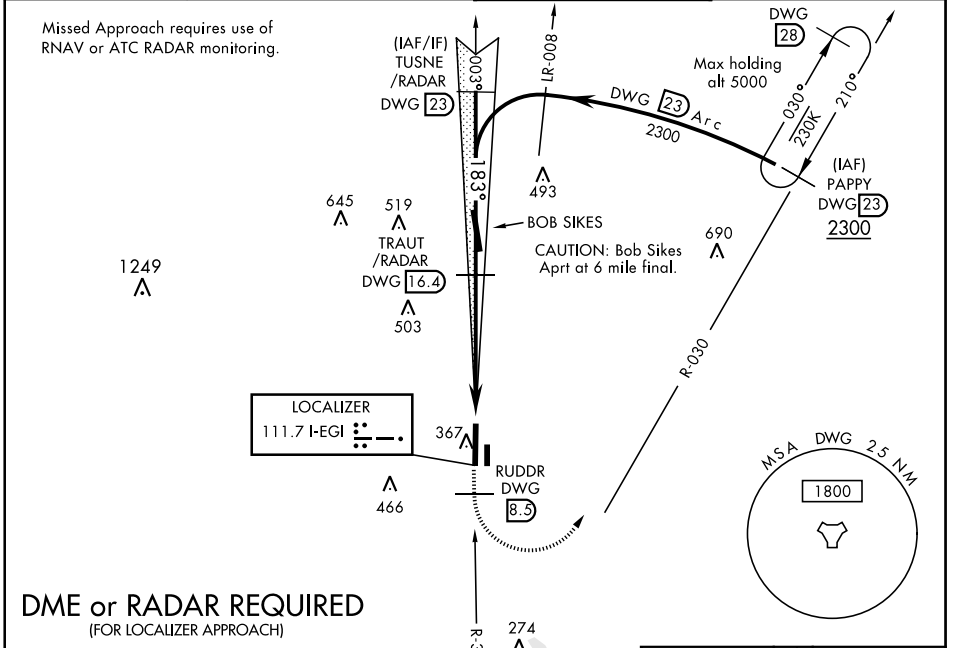
DUKE FLD (EGLIN AF AUX NR3) (KEGI)

\* When ALS inop, increase RVR to 40, vis to ¼ mile.  
 \*\* When ALS inop, increase RVR to 55, vis to 1 mile.



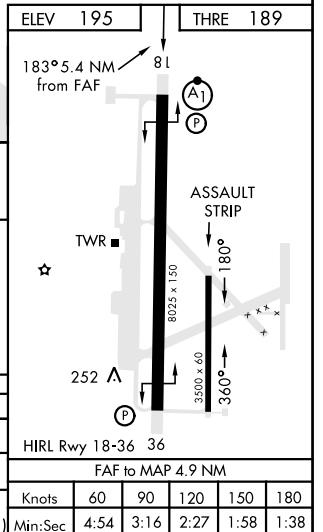
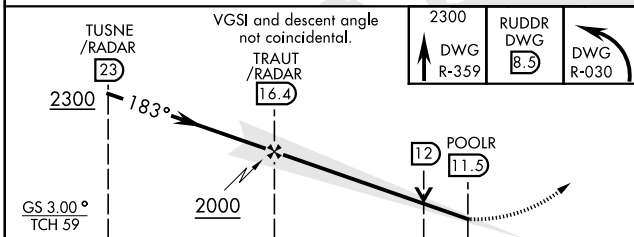
MISSED APPROACH: Climb on DWG R-359 to 8.5 DME (RUDDR), then climbing left turn to 2300 direct DWG R-030/23 DME (PAPPY) and hold.

ATIS ★ <b>244.575</b>	EGLIN APP CON <b>125.1 281.45</b> (271° - 089°) <b>132.1 360.6</b> (090° - 270°)	DUKE TOWER ★ <b>133.2 290.425</b>	GND CON <b>123.25 251.125</b>
--------------------------	--	--------------------------------------	----------------------------------



**DME or RADAR REQUIRED**  
(FOR LOCALIZER APPROACH)

EMERG SAFE ALT 100 NM 3600



CATEGORY	A	B	C	D	E
S-ILS 18 *	389/24		200	(200-½)	
S-LOC 18 **	560/24	371 (400-½)	560/35	371	(400-¾)
CIRCLING	700-1	505 (600-1)	700-1½ 505 (600-1½)	820-2 625 (700-2)	840-2¼ 645 (700-2¼)

# ILS or LOC RWY 18

SE-3, 25 FEB 2021 to 25 MAR 2021

SE-3, 25 FEB 2021 to 25 MAR 2021