

# RNAV (GPS) RWY 18

APCH CRS <b>183°</b>	Rwy Idg <b>8025</b>
	THRE <b>189</b>
	Arprt Elev <b>195</b>

AL-699 [USAF]

DUKE FLD (EGLIN AF AUX NR3) (KEGI)

DME/DME RNP-0.3 NA		ALSF-1 	MISSED APPROACH: Climb straight ahead to 3000 direct WUTAR and hold.	
ATIS ★ <b>244.575</b>	EGLIN APP CON <b>125.1 281.45</b> (271° - 089°) <b>132.1 360.6</b> (090° - 270°)		DUKE TOWER ★ <b>133.2 290.425</b>	GND CON <b>123.25 251.125</b>

Procedure not useable at times due to restricted area activity.



For uncompensated Baro-VNAV systems, LNAV/VNAV NA below -15°C (5°F).



2100 183° (8.7)

340

BOB SIKES

CAUTION:  
BOB SIKES Arprt  
at 6 NM final

(FAF) ROXXI

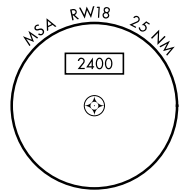
348 RW18

466

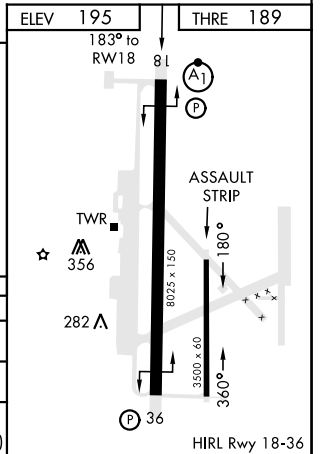
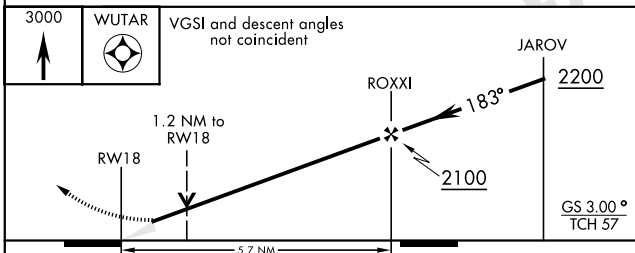


WUTAR

Max holding  
alt 3000



EMERG SAFE ALT 100 NM 3600



CATEGORY	A	B	C	D	E
LNAV/VNAV DA	560/37		371	(400-34)	
LNAV MDA	640/24	451 (500-½)	640/45	451	(500-¾)
CIRCLING	700-1	505 (600-1)	700-1½ 505 (600-1½)	820-2 625 (700-2)	840-2¼ 645 (700-2¼)

# RNAV (GPS) RWY 18

SE-3, 25 FEB 2021 to 25 MAR 2021

SE-3, 25 FEB 2021 to 25 MAR 2021