

WAAS CH 99304 W22A	APP CRS 227°	Rwy Idg TDZE 1642 Apt Elev 1642	5000
--	------------------------	---	-------------

RNAV (GPS) RWY 22

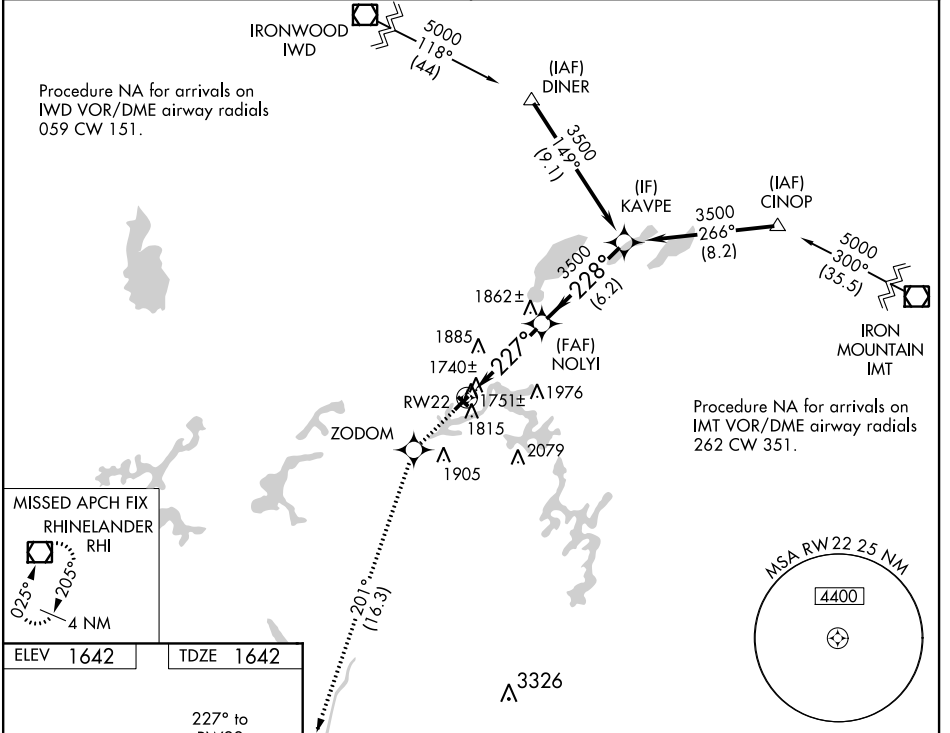
EAGLE RIVER UNION (EGV)

RNP APCH

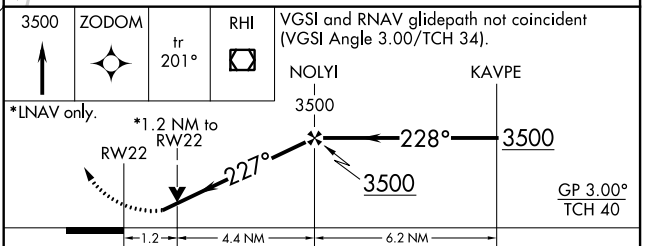
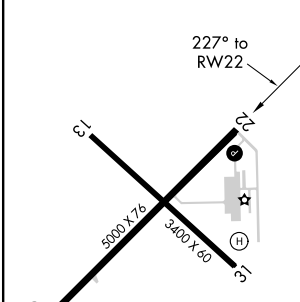
Baro-VNAV and VDP NA when using Minocqua-Woodruff altimeter setting. For uncompensated Baro-VNAV systems, LNAV/VNAV NA below -18°C or above 45°C. When local altimeter setting not received, use Minocqua-Woodruff altimeter setting and increase all DAs 47 feet and all MDAs 60 feet, increase LNAV Cat C visibility ¼ SM, Cat D ½ SM. Rwy 22 helicopter visibility reduction below ¾ SM NA.

MISSED APPROACH:
Climb to 3500 direct ZODOM and via track 201° to RHI VOR/DME and hold.

AWOS-3 118.325	MINNEAPOLIS CENTER 133.65 281.5	UNICOM 122.8 (CTAF)
--------------------------	---	-------------------------------



ELEV 1642	TDZE 1642
-----------	-----------



CATEGORY	A	B	C	D
LPV DA		2012-1¼	370 (400-1¼)	
LNAV/VNAV DA		2038-1½	396 (400-1½)	
LNAV MDA	2040-1	398 (400-1)	2040-1⅛ 398 (400-1⅛)	2040-1¼ 398 (400-1¼)
CIRCLING	2120-1	478 (500-1)	2120-1½ 478 (500-1½)	2200-2 558 (600-2)

REIL Rwy 4 and 22
MIRL Rwy 4-22 and 13-31

EC-3, 25 FEB 2021 to 25 MAR 2021

EC-3, 25 FEB 2021 to 25 MAR 2021