

WAAS CH 77909	APP CRS W27A 269°	Rwy Idg TDZE Apt Elev	5503 387 387
-------------------------	--------------------------------	-----------------------------	---

RNAV (GPS) RWY 27

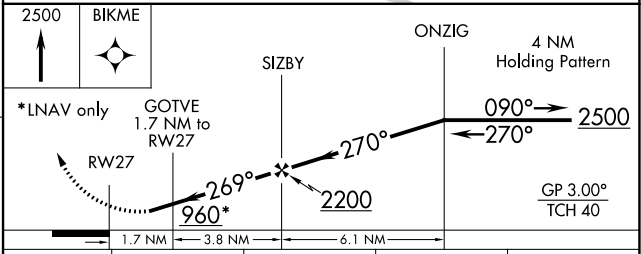
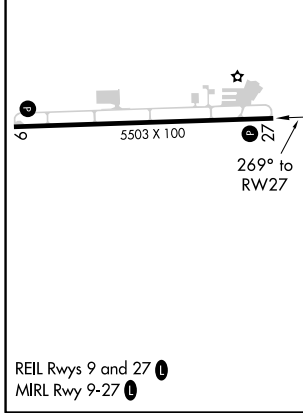
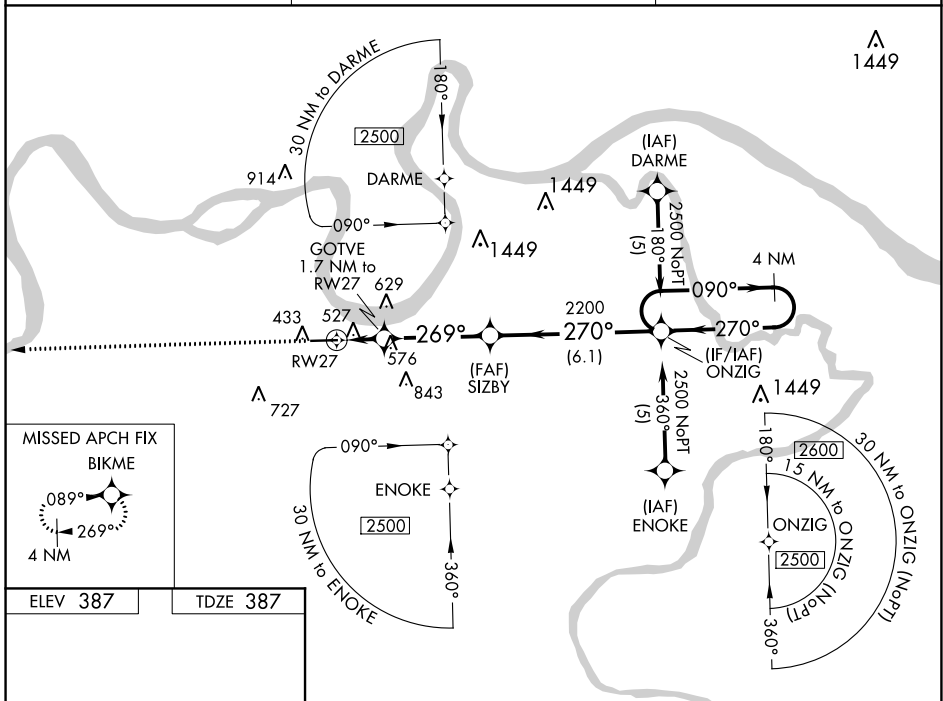
HENDERSON CITY-COUNTY (E.H.R.)

RNP APCH.

Baro-VNAV NA when using Evansville altimeter setting. For uncompensated Baro-VNAV systems, LNAV/VNAV NA below -15°C or above 48°C. Rwy 27 helicopter visibility reduction below ¾ SM NA. When local altimeter setting not received, use Evansville altimeter setting and increase all DA 41 feet and all MDA 60 feet and LPV all Cats, LNAV/VNAV all Cats and LNAV Cats C/D visibilities ¼ mile.

MISSED APPROACH: Climb to 2500 direct BIKME and hold.

AWOS-3PT 118.85	EVANSVILLE APP CON ★ 124.025 257.8	UNICOM 122.8 (CTAF) 0
---------------------------	--	--



CATEGORY	A	B	C	D
LPV DA		733-1¼	346 (400-1¼)	
LNAV/VNAV DA		827-1½	440 (500-1½)	
LNAV MDA	840-1	453 (500-1)	840-1⅜ 453 (500-1⅜)	840-1½ 453 (500-1½)

SE-1, 25 FEB 2021 to 25 MAR 2021

SE-1, 25 FEB 2021 to 25 MAR 2021