

APP CRS <b>240°</b>	Rwy Idg TDZE Apt Elev	<b>6001</b> <b>775</b> <b>775</b>
------------------------	-----------------------------	---

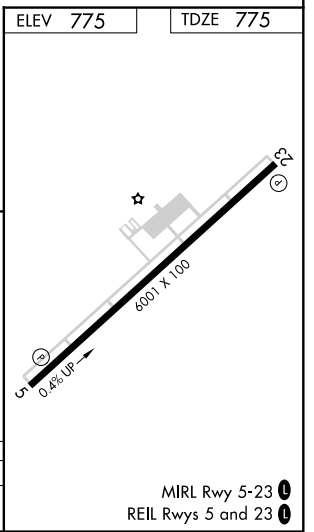
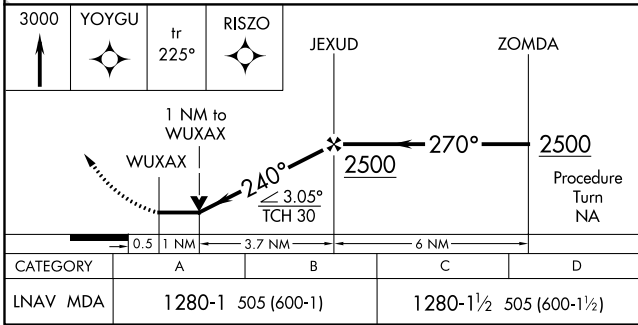
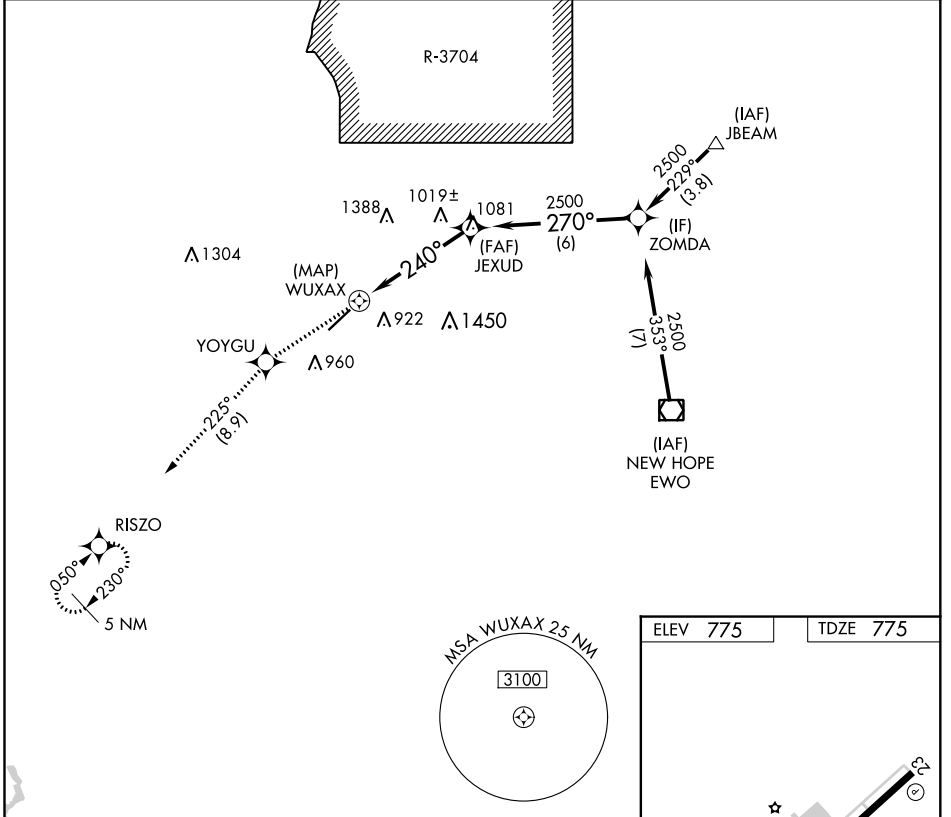
# RNAV (GPS) RWY 23

ADDINGTON FIELD (EKK)

RNP APCH.  
 ▼ If local altimeter setting not received, use Louisville Muhammad Ali Intl altimeter setting and increase all MDAs 120 feet. VDP NA when using Louisville Muhammad Ali Intl altimeter setting.  
 ▲ NA

MISSED APPROACH: Climb to 3000 direct YOYGU and via 225° track to RISZO and hold.

AWOS-3 <b>121.025</b>	LOUISVILLE APP CON <b>132.075 327.0</b>	CLNC DEL <b>119.45</b>	UNICOM <b>122.8 (CTAF) ①</b>
--------------------------	--	---------------------------	---------------------------------



SE-1, 25 FEB 2021 to 25 MAR 2021

SE-1, 25 FEB 2021 to 25 MAR 2021