

WAAS Ch 82199 W23A	APP CRS 233°	Rwy Idg TDZE Apt Elev	6007 700 700
--	------------------------	-----------------------------	---

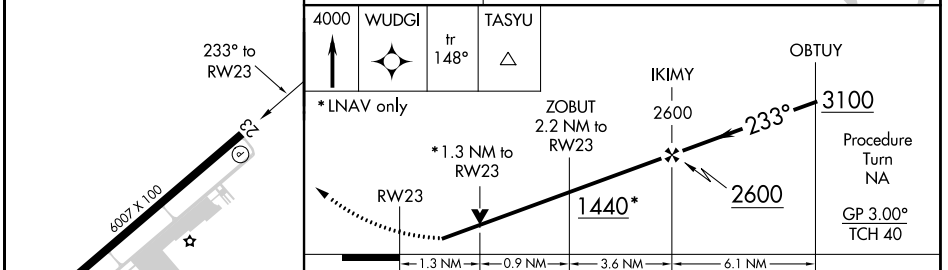
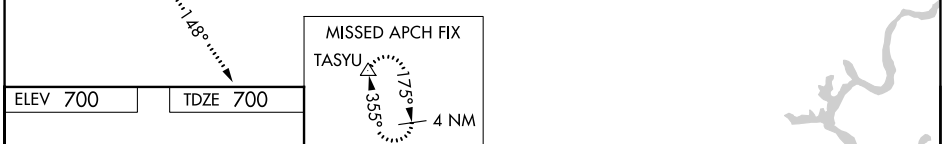
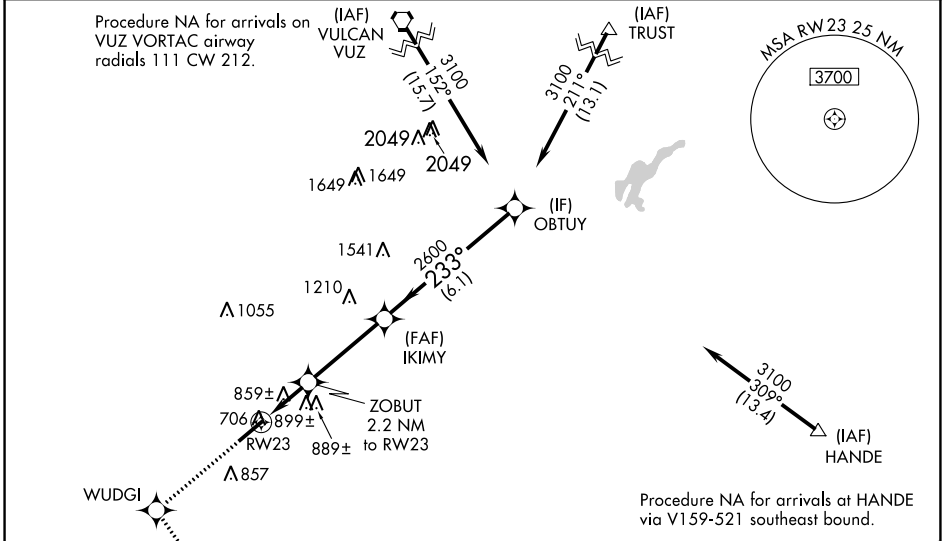
RNAV (GPS) RWY 23

BESSEMER (E K Y)

NA For uncompensated Baro-VNAV systems, LNAV/VNAV NA below -16°C (4°F) or above 54°C (130°F). DME/DME RNP-0.3 NA. Helicopter visibility reduction below ¾ SM NA. When local altimeter setting not received, use Alabaster altimeter setting and increase all DA 41 feet and all MDA 60 feet, increase LNAV Cat C and D visibility ¼ mile. Baro-VNAV and VDP NA when using Alabaster altimeter setting.

MISSED APPROACH: Climb to 4000 direct WUDGI and on track 148° to TASYU and hold, continue climb-in-hold to 4000.

AWOS-3PT 118.825	BIRMINGHAM APP CON 124.9 351.85	CLNC DEL 123.75	UNICOM 123.0 (CTAF)
----------------------------	---	---------------------------	-------------------------------



ELEV 700	TDZE 700	MISSED APCH FIX TASYU 4000 WUDGI TASYU 4 NM 148° 355°																							
		<table border="1"> <tr> <td>4000</td> <td>WUDGI</td> <td>tr 148°</td> <td>TASYU</td> <td></td> </tr> <tr> <td colspan="5">*LNAV only</td> </tr> <tr> <td></td> <td>ZOBUT 2.2 NM to RWY 23</td> <td>IKIMY 2600</td> <td>OBTUY 3100</td> <td>Procedure Turn NA GP 3.00° TCH 40</td> </tr> <tr> <td></td> <td>1.3 NM</td> <td>0.9 NM</td> <td>3.6 NM</td> <td>6.1 NM</td> </tr> </table>				4000	WUDGI	tr 148°	TASYU		*LNAV only						ZOBUT 2.2 NM to RWY 23	IKIMY 2600	OBTUY 3100	Procedure Turn NA GP 3.00° TCH 40		1.3 NM	0.9 NM	3.6 NM	6.1 NM
4000	WUDGI	tr 148°	TASYU																						
*LNAV only																									
	ZOBUT 2.2 NM to RWY 23	IKIMY 2600	OBTUY 3100	Procedure Turn NA GP 3.00° TCH 40																					
	1.3 NM	0.9 NM	3.6 NM	6.1 NM																					
CATEGORY	A	B	C	D																					
LPV DA	972-1 272 (300-1)																								
LNAV/DA VNAV	1170-1¼ 470 (500-1¼)																								
LNAV MDA	1160-1	460 (500-1)	1160-1¼ 460 (500-1¼)	1160-1½ 460 (500-1½)																					
CIRCLING	1200-1	500 (500-1)	1220-1½ 520 (600-1½)	1260-2 560 (600-2)																					

SE-4, 25 FEB 2021 to 25 MAR 2021

SE-4, 25 FEB 2021 to 25 MAR 2021