

WAAS CH 40229 W17A	APP CRS 166°	Rwy Idg TDZE Apt Elev	4280 184 184
----------------------------------------	------------------------	-----------------------------	-----------------------------------------

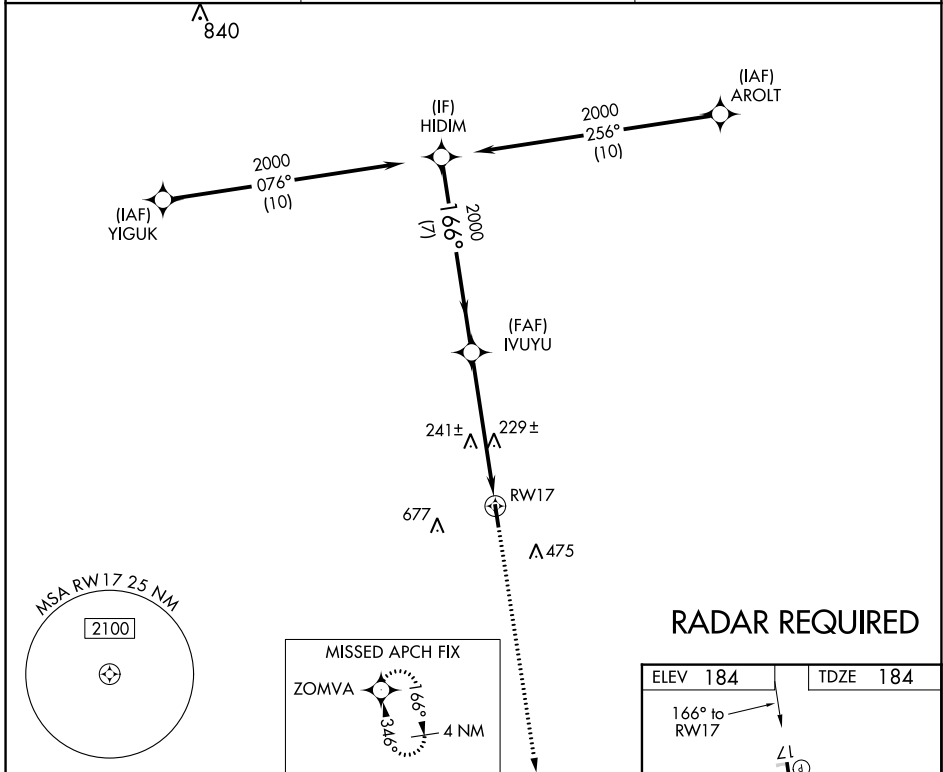
RNAV (GPS) RWY 17

EAGLE LAKE (ELA)

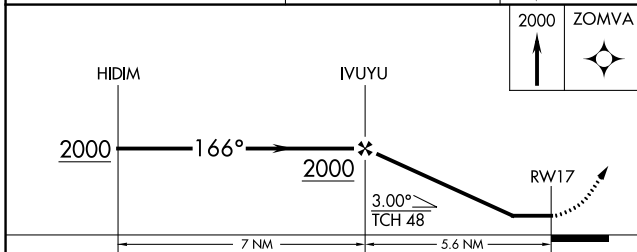
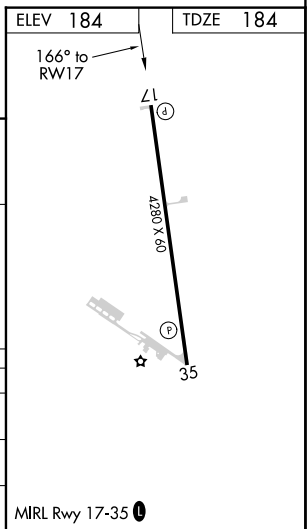
▼ When VGSI inop, procedure NA at night. DME/DME RNP-0.3 NA.
▲ NA Helicopter visibility reduction below 1 SM NA.
 When local altimeter setting not received, use Sugar Land Rgnl altimeter setting.

MISSED APPROACH:
Climb to 2000 direct ZOMVA and hold.

AWOS-3PT 128.475	HOUSTON APP CON 124.225 306.975	CTAF 122.9
----------------------------	-------------------------------------------	----------------------



RADAR REQUIRED



CATEGORY	A	B	C	D
LP MDA	580-1	396 (400-1)	580-1½ 396 (400-1½)	NA
LNVA MDA	600-1	416 (500-1)	600-1½ 416 (500-1½)	NA
CIRCLING	860-1	676 (700-1)	860-2 676 (700-2)	NA

SC-5, 25 FEB 2021 to 25 MAR 2021

SC-5, 25 FEB 2021 to 25 MAR 2021