



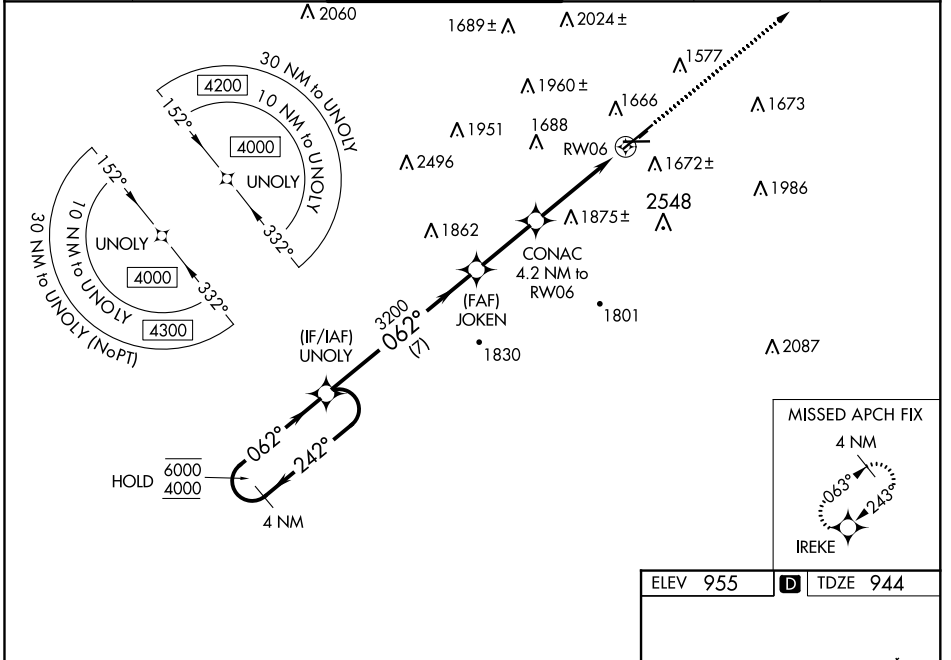
WAAS CH 42827 W06A	APP CRS 062°	Rwy Idg TDZE Apt Elev	7401 944 955
--	------------------------	-----------------------------	---

RNAV (GPS) RWY 6

ELMIRA/CORNING RGNL (ELM)

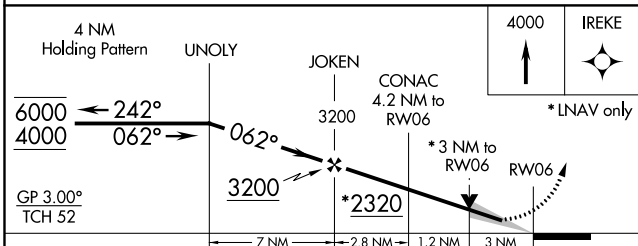
RNP APCH.			MISSED APPROACH: Climb to 4000 direct IREKE and hold.
 -17°C # RVR 1800 authorized with use of FD or AP or HUD to DA.	Inop table does not apply to LNAV/VNAV all Cats. Circling Rwy 10 NA at night. Circling NA to Rwy's 5 and 23. Circling NA for Cat D south of Rwy's 10 and 28. For uncompensated Baro-VNAV systems, LNAV/VNAV NA below -21°C or above 54°C.		

ATIS 125.475	ELMIRA APP CON * 128.425 257.8	ELMIRA TOWER * 121.1 (CTAF) 0 257.8	GND CON 121.9	CLNC DEL 121.9	UNICOM 122.95
------------------------	--	---	-------------------------	--------------------------	-------------------------

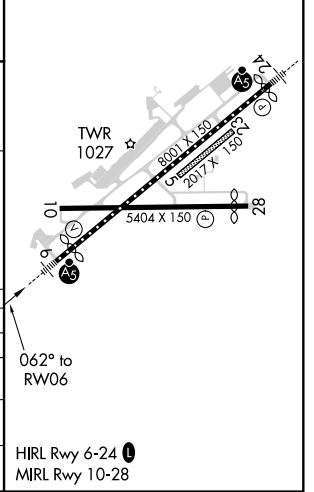


NE-2, 25 FEB 2021 to 25 MAR 2021

NE-2, 25 FEB 2021 to 25 MAR 2021



ELEV 955	D TDZE 944
----------	-------------------



GP 3.00° TCH 52	UNOLY	JOKEN	CONAC	RW06
	7 NM	2.8 NM	1.2 NM	3 NM
CATEGORY	A	B	C	D
LPV DA#		1144/24	200 (200-½)	
LNAV/VNAV DA		2138-5	1194 (1200-5)	
LNAV MDA	1940/40 996 (1000-¾)	1940/55 996 (1000-1)	1940-2½	996 (1000-2½)
CIRCLING	2020-1¼ 1065 (1100-1¼)	2080-1½ 1125 (1200-1½)	2100-3 1145 (1200-3)	2340-3 1385 (1400-3)