

WAAS CH <b>90337</b> <b>W34A</b>	APP CRS <b>343°</b>	Rwy Idg TDZE Apt Elev	<b>8203</b> <b>7280</b> <b>7289</b>
--	------------------------	-----------------------------	---

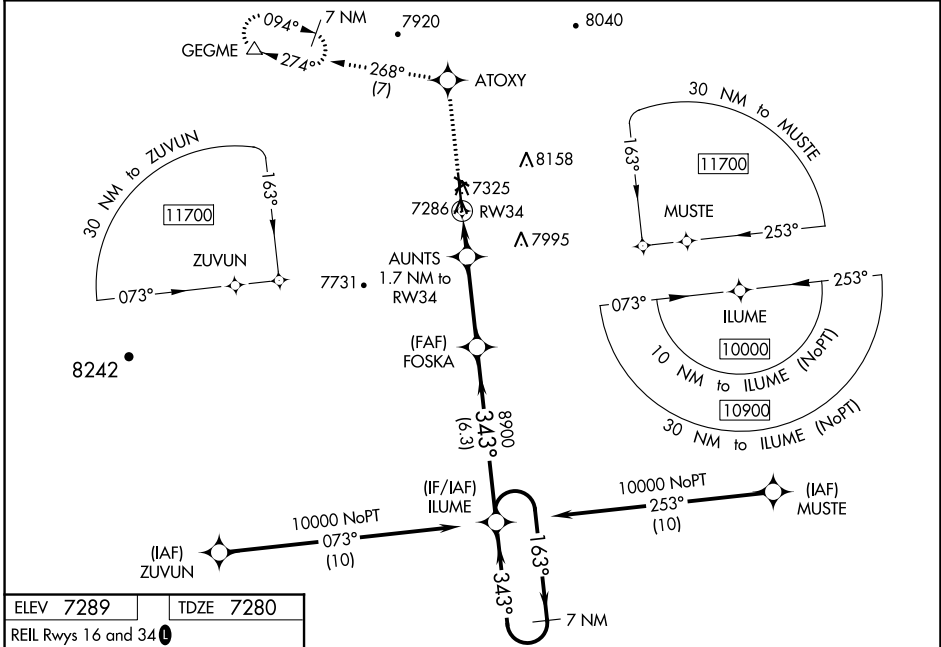
# RNAV (GPS) RWY 34

KEMMERER MUNI (EMM)

**Baro-VNAV and VDP NA** when using Evanston altimeter setting. For uncompensated Baro-VNAV systems, LNAV/VNAV NA below -27°C (-16°F) or above 54°C (130°F). DME/DME RNP-0.3 NA. Night landing: Rwy 4, 10, 22, 28 NA. When local altimeter setting not received, use Evanston altimeter setting; increase all DA 111 feet and visibilities 1/8 mile; increase all MDA 120 feet.

**MISSED APPROACH:** Climb to 12000 direct ATOXY and on track 268° direct GEGME and hold, continue climb-in-hold to 12000.

AWOS-3PT <b>119.675</b>	SALT LAKE CITY CENTER <b>124.35 353.5</b>	UNICOM <b>122.8 (CTAF) 0*</b>
----------------------------	--	----------------------------------

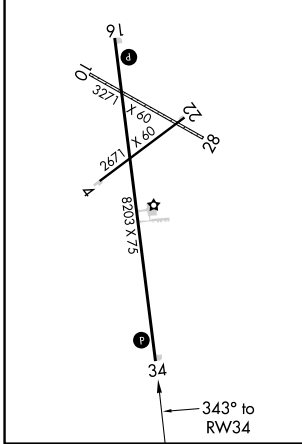


NW-1, 25 FEB 2021 to 25 MAR 2021

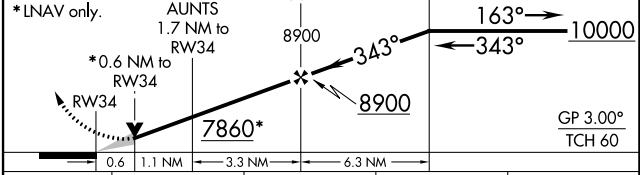
NW-1, 25 FEB 2021 to 25 MAR 2021

ELEV 7289	TDZE 7280
-----------	-----------

REIL Rwy 16 and 34  
MIRL Rwy 16-34 and 4-22



12000	ATOXY	tr 268°	GEGME	VGSi and RNAV glidepath not coincident (VGSi Angle 3.25/TCH 61).	7 NM Holding Pattern
-------	-------	---------	-------	--	----------------------



CATEGORY	A	B	C	D
LPV DA	7530-1	250 (300-1)		NA
LNAV/VNAV DA	7530-1	250 (300-1)		NA
LNAV MDA	7540-1	260 (300-1)		NA
<b>C</b> CIRCLING	7660-1 371 (400-1)	8240-1½ 951 (1000-1½)		NA