

ENID, OKLAHOMA

LOC I-LVC 108.9	APCH CRS 175°	Rwy ldg TDZE Arprt Elev 9217 1277 1307
---------------------------	-------------------------	--

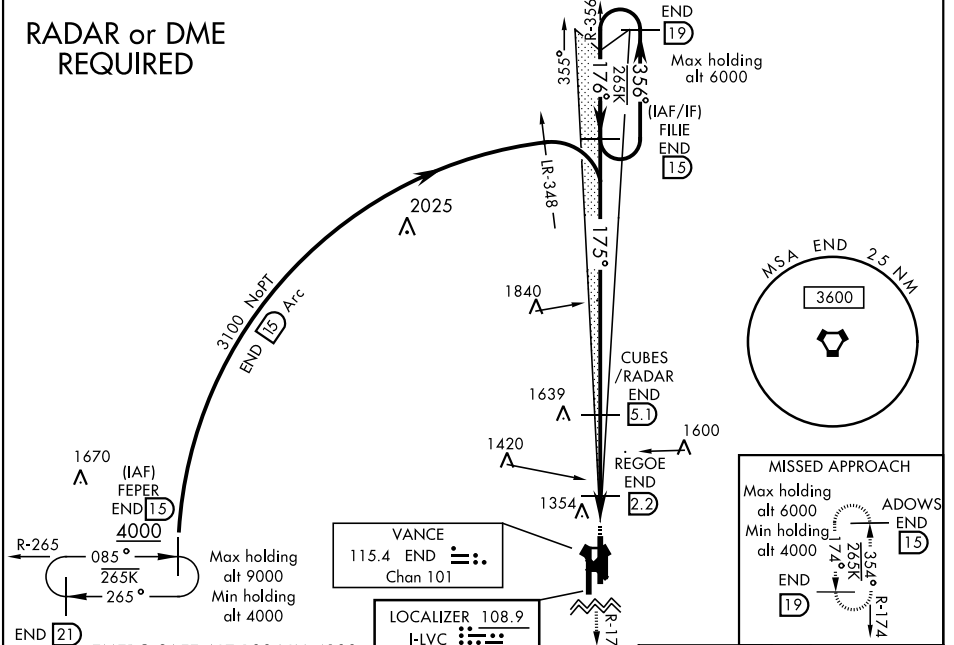
AL-135 [USAF]

ILS or LOC RWY 17C

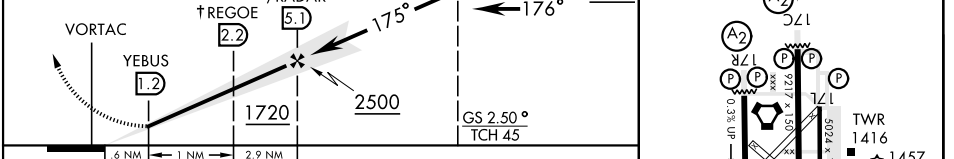
VANCE AFB (KEND)

<p>▼ *When ALS inop, increase RVR to 55, vis to 1 mile. **When ALS inop, increase CAT AB RVR to 55, vis to 1 mile; CAT CDE vis to 1 3/8 mile. ***Circling not authorized at night to Rwy 35R.</p>	<p>SALSF </p>	<p>MISSED APPROACH: Climb to 4000, intercept END VORTAC R-174 to ADOWS and hold.</p>
---	--------------------	--

<p>ATIS ★ 115.4 263.15</p>	<p>VANCE APP CON 125.45 388.2 EAST 126.75 346.325 WEST</p>	<p>VANCE TOWER ★ 124.05 259.1</p>	<p>GND CON 121.8 289.4</p>	<p>CLNC DEL 225.4</p>
---------------------------------------	--	--	---------------------------------------	----------------------------------



<p>EMERG SAFE ALT 100 NM 4800</p>	<p>4000 END R-174</p>	<p>ADOWS END 15</p>	<p>VGSI and ILS glidepath not coincident (VGSI Angle 2.50/TCH 51)</p>	<p>VANCE 115.4 END Chan 101</p>	<p>LOCALIZER 108.9 I-LVC</p>	<p>FILE 15</p>	<p>LOC only</p>
-----------------------------------	-----------------------	---------------------	---	---------------------------------	------------------------------	----------------	-----------------



CATEGORY	A	B	C	D	E
S-ILS 17C	1477/40		200	(200-34)	
S-LOC 17C*	1620/40		343	(400-34)	
CIRCLING ***	1760-1 453 (500-1)	1820-1 1/2 513 (600-1 1/2)	1920-2 613 (700-2)	2300-3 993 (1000-3)	

WITHOUT REGOE FIX					
S-LOC 17C **	1720/40	443 (500-34)	1720/55	443 (500-1)	
CIRCLING ***	1760-1 453 (500-1)	1820-1 1/2 513 (600-1 1/2)	1920-2 613 (700-2)	2300-3 993 (1000-3)	

ELEV 1307	TDZE 1277
REIL Rwy 17L	MIRL Rwy 17L-35R
175° 4.5 NM from FAF	

Key features in the diagram:

- Runways:** RWY 17C-35C, RWY 17R-35L, RWY 35L
- TWR:** 1416, 1457
- Navigation Aids:** A2, P, F, ZL1, ZL2
- Distances:** 3.9 NM FAF to MAP

SC-1, 25 FEB 2021 to 25 MAR 2021

SC-1, 25 FEB 2021 to 25 MAR 2021

ENID, OKLAHOMA

Amtd 1 26MAR20

36° 20'N-97° 55'W

VANCE AFB (KEND)

ILS or LOC RWY 17C