

ENID, OKLAHOMA

# ILS or LOC RWY 35C

VANCE AFB (KEND)

LOC I-END <b>110.1</b>	APCH CRS <b>355°</b>	Rwy Idg <b>9217</b>
		TDZE <b>1293</b>
		Arprt Elev <b>1307</b>

AL-135 [USAF]

RADAR or DME required.

A2 SALSF
 MISSED APPROACH: Climb to 4000, intercept END VORTAC R-356 to FILE and hold.

▼ \*When ALS inop, increase CAT AB RVR to 55, vis to 1 mile; CAT CDE RVR to 50, vis to 1 mile.  
**\*\*Circling not authorized at night to Rwy 35R.**

ATIS ★ <b>115.4 263.15</b>	VANCE APP CON <b>125.45 388.2 EAST</b> <b>126.75 346.325 WEST</b>	VANCE TOWER ★ <b>124.05 259.1</b>	GND CON <b>121.8 289.4</b>	CLNC DEL <b>225.4</b>
-------------------------------	---	--------------------------------------	-------------------------------	--------------------------

\*\*\*When ALS inop, increase CAT AB RVR to 55, vis to 1 mile; CAT CDE RVR to 60, vis to 1½ mile.

LOCALIZER **110.1**  
I-END :::

VANCE  
115.4 END :::  
Chan 101

1668 ▲

SESOE END 2.3

PAROS/RADAR END 5.3

MISSED APCH FIX

FILE END 15

END 19

Max holding alt 6000

R-265

085°

265K

265°

END 21

Max holding alt 9000  
Min holding alt 4000

(IAF) FEPER END 15

4000

3100 NoPT Arc

END 15

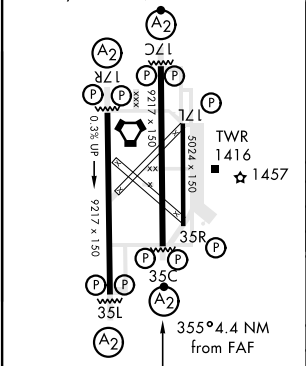
MSA END 2.5 NM

3600

EMERG SAFE ALT 100 NM 4800

ELEV 1307	TDZE 1293
-----------	-----------

REIL Rwy 17L  
MIRL Rwy 17L-35R  
HIRL Rwy 17C-35C, 17R-35L



ADOWS 15

3100

174°

354°

CAUTION:  
ILS RWY 35C  
Height Group 4  
WCH 16ft.

PAROS/RADAR 5.3

↑ LOC only

+ SESOE 2.3

GS 2.50°

TCH 42

1680

4000 END R-356 15

VORTAC

POMOE 1.5

3.0 NM

8 NM

6 NM

CATEGORY	A	B	C	D	E
S-ILS 35C	1493/40		200	(200-¾)	
S-LOC 35C*	1620/40		327	(400-¾)	
<input checked="" type="checkbox"/> CIRCLING**	1760-1 453 (500-1)	1820-1½ 513 (600-1½)	1920-2 613 (700-2)	2300-3 993 (1000-3)	
WITHOUT SESOE FIX MINIMUMS					
S-LOC 35C***	1680/40 387 (400-¾)		1680/45 387 (400-¾)		
<input checked="" type="checkbox"/> CIRCLING**	1760-1 453 (500-1)	1820-1½ 513 (600-1½)	1920-2 613 (700-2)	2300-3 993 (1000-3)	

ENID, OKLAHOMA  
Amdt 1 10SEP20

36°20'N-97°55'W

VANCE AFB (KEND)

# ILS or LOC RWY 35C

SC-1, 25 FEB 2021 to 25 MAR 2021

SC-1, 25 FEB 2021 to 25 MAR 2021