

JAYHAWKE-TWO DEPARTURE (JHK 2•IFI)

SL-135 [USAF]

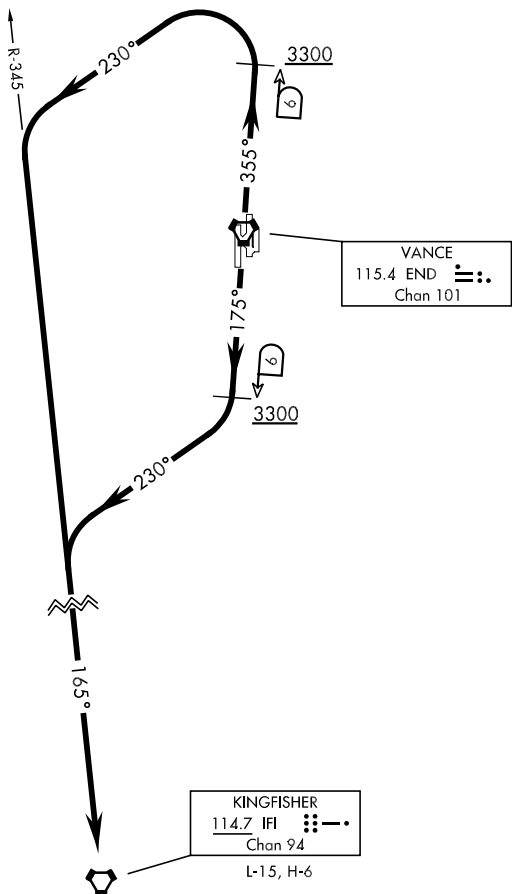
VANCE AFB (KEND)

ENID, OKLAHOMA

ATIS ★ 115.4 263.15
 CLNC DEL
 225.4
 GND CON
 121.8 289.4
 VANCE TOWER ★
 124.05 259.1
 VANCE DEP CON
 120.525 306.3
 FORT WORTH CENTER
 128.4 290.2

| Rwy | Knots | 60 | 120 | 180 | 240 |
|-----|----------|-----|-----|------|------|
| 35L | V/V(fpm) | 360 | 710 | 1060 | 1420 |
| 35C | V/V(fpm) | 380 | 760 | 1140 | 1510 |
| 17R | V/V(fpm) | 430 | 850 | 1270 | 1690 |
| 17C | V/V(fpm) | 400 | 790 | 1180 | 1580 |

ATC Climb Rate to 3300



DME REQUIRED

EMERG SAFE ALT 100 NM 4800

DEPARTURE ROUTE DESCRIPTION

TAKE-OFF RWY 17C/R: Track 175° to END VORTAC 6 DME, cross END 6 DME at or above 3300, then turn right heading 230°, intercept IFI VORTAC R-345 to IFI.

TAKE-OFF RWY 35C/L: Track 355° to END VORTAC 6 DME, cross END 6 DME at or above 3300, then turn left heading 230°, intercept IFI VORTAC R-345 to IFI.

JAYHAWKE-TWO DEPARTURE (JHK 2•IFI)

ENID, OKLAHOMA
VANCE AFB (KEND)

SC-1, 25 FEB 2021 to 25 MAR 2021

SC-1, 25 FEB 2021 to 25 MAR 2021