

ENID, OKLAHOMA

RNAV (GPS) RWY 35C

20198

APCH CRS 355°	Rwy Idg 9217
	TDZE 1293
	Arprt Elev 1307

AL-135 (USAF)

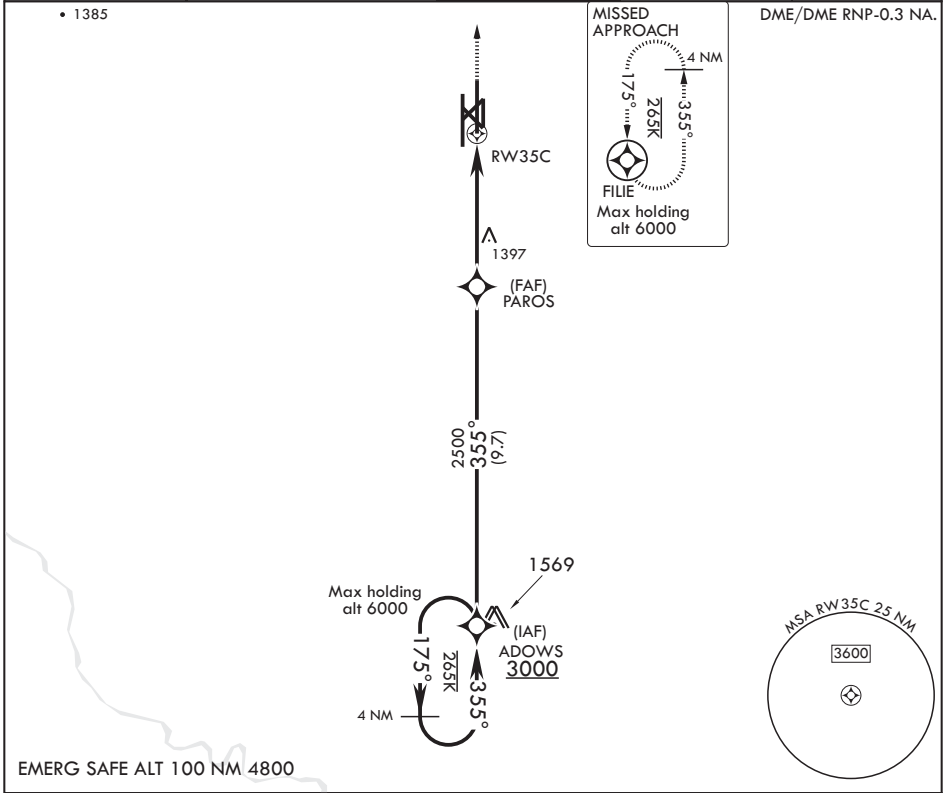
VANCE AFB (KEND)

⚠ * When ALS inop, increase CAT AB RVR to 55 and vis to 1 mile, CAT CDE RVR to 60 and vis to 1 1/8 miles.
 ** Circling not authorized at night to RWY 35R.



MISSED APPROACH: Climb to 4000 direct FILE and hold.

ATIS* 115.4 263.15	APP CON 125.45 388.2 EAST 126.75 346.325 WEST	TOWER* 124.05 259.1	GND CON 121.8 289.4	CLNC DEL 225.4
------------------------------	---	-------------------------------	-------------------------------	--------------------------



		ELEV 1307 TDZE 1293 Dual PAPI Rwy 17C-35C, 17R-35L			
CATEGORY	A	B	C	D	E
LNAV MDA*	1680/40	387 (400-3/4)	1680/45	387 (400-7/8)	
C CIRCLING**	1760-1	453 (500-1)	1820-1 1/2 513 (600-1 1/2)	1920-2 613 (700-2)	2300-3 993 (1000-3)

ENID, OKLAHOMA 36°20'N - 97°55'W VANCE AFB (KEND)

Amdt 7 15AUG19

RNAV (GPS) RWY 35C

SC-1, 25 FEB 2021 to 25 MAR 2021

SC-1, 25 FEB 2021 to 25 MAR 2021

REIL Rwy 17L
MIRL Rwy 17L-35R
HIRL Rwy 17C-35C, 17R-35L