

ENID, OKLAHOMA

RNAV (GPS)-A

APCH CRS 314°	Rwy Idg TDZE Arprt Elev	N/A N/A 1307
-------------------------	-------------------------------	---

AL-135 (USAF)

VANCE AFB (KEND)

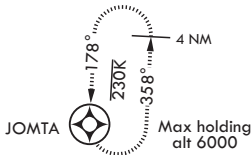
▼ * Circle to remain East of Rwy 35R/17L extended centerline unless directed otherwise by ATC. Circling not authorized at night to Rwy 35R.

MISSED APPROACH: Climb to 1900, then climbing right turn to 4300 direct JOMTA and hold.

ATIS* 115.4 263.15	APP CON 125.45 388.2 EAST 126.75 346.325 WEST	TOWER* 124.05 259.1	GND CON 121.8 289.4	CLNC DEL 225.4
------------------------------	---	-------------------------------	-------------------------------	--------------------------

DME/DME RNP-0.3 NA

FOR USE BY 71 FTW ACFT ONLY



2026

1840

1464

1809

1498

1369

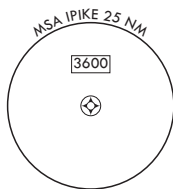
1572

1727

1681

1495

ENID WOODRING RGNL



1470

IPIKE

1495

(FAF) RHATT

1222

2800

(3-1) 4

(5-5)

134°

230K

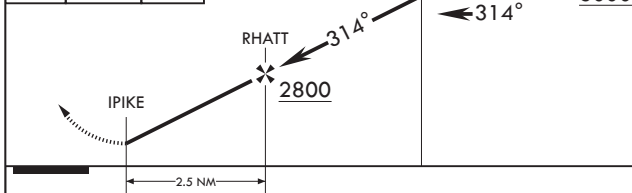
314°

(IAF/IF) TRHAP

4 NM

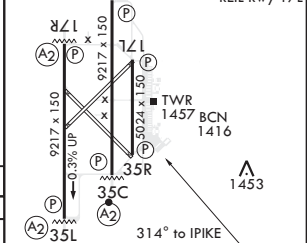
Max holding alt 6000

EMERG SAFE ALT 100 NM 4800



CATEGORY	A	B	C	D
CIRCLING*	1760-4	453 (500-4)	NA	NA

ELEV 1307 HIRL Rwys 17C-35C, 17R-35L
Dual PAPI Rwys 17C-35C, 17R-35L
MIRL Rwy 17L-35R
REIL Rwy 17L



ENID, OKLAHOMA
Amdt 5 15AUG19

36°20'N - 97°55'W

VANCE AFB (KEND)

RNAV (GPS)-A

SC-1, 25 FEB 2021 to 25 MAR 2021

SC-1, 25 FEB 2021 to 25 MAR 2021