

# SAPEE ONE DEPARTURE (RNAV) (SAPEE1•SAPEE)

ENID, OKLAHOMA

ATIS ★ 115.4 263.15  
 CLNC DEL  
 225.4  
 GND CON  
 121.8 289.4  
 VANCE TOWER ★  
 124.05 259.1  
 VANCE DEP CON  
 120.525 306.3

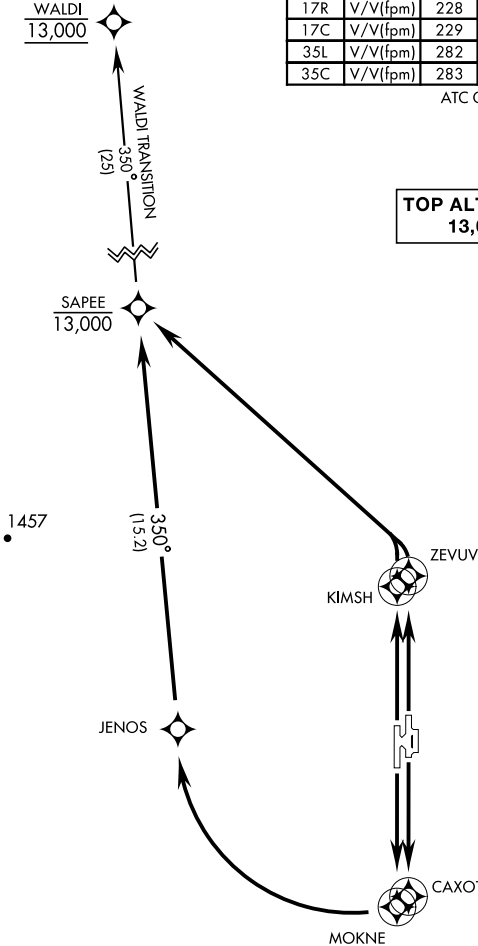
SL-135 [USAF]

Rwy	Knots	60	120	180	240	300	360
17R	V/V(fpm)	228	456	684	912	1140	1368
17C	V/V(fpm)	229	458	687	916	1145	1374
35L	V/V(fpm)	282	564	846	1128	1410	1692
35C	V/V(fpm)	283	566	849	1132	1415	1698

ATC Climb Rate to 13,000

RNAV1-GPS.

**TOP ALTITUDE:**  
**13,000**



EMERG SAFE ALT 100 NM 4800



## DEPARTURE ROUTE DESCRIPTION

**TAKE-OFF RWY 17C:** Climb direct CAXOT, then right turn direct JENOS, then climbing track 350° to cross SAPEE at or below 13,000.

**TAKE-OFF RWY 17R:** Climb direct MOKNE, then right turn direct JENOS, then climbing track 350° to cross SAPEE at or below 13,000.

**TAKE-OFF RWY 35L:** Climb direct KIMSH, then climbing left turn direct to cross SAPEE at or below 13,000.

**TAKE-OFF RWY 35C:** Climb direct ZEVUV, then climbing left turn direct to cross SAPEE at or below 13,000.

**WALDI TRANSITION (SAPEE1.WALDI):** From over SAPEE climbing track 350° to cross WALDI at 13,000.

# SAPEE ONE DEPARTURE (RNAV) (SAPEE1•SAPEE)

ENID, OKLAHOMA

VANCE AFB (KEND)