

ENID, OKLAHOMA

VOR/DME or TACAN RWY 17C

VORTAC END 115.4 Chan 101	APCH CRS 182°	Rwy Idg 9217 TDZE 1277 Arprt Elev 1307
---	-------------------------	---

AL-135 [USAF]

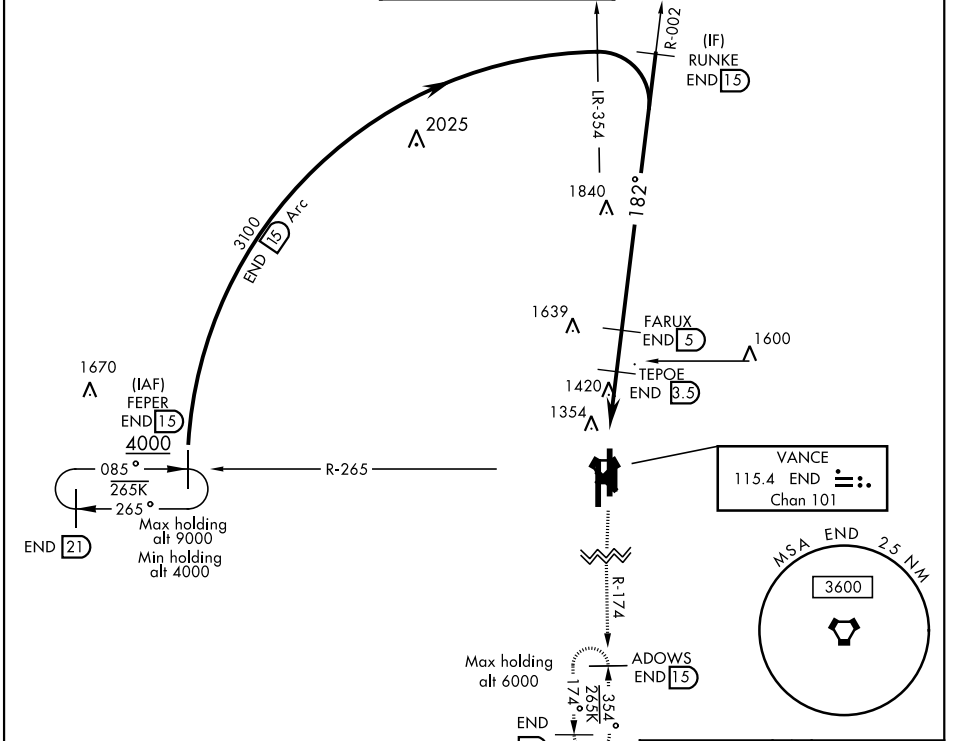
VANCE AFB (KEND)

▼ * When ALS inop, increase CAT AB RVR to 55 and vis to 1 1/2 miles.
 CAT CDE RVR to 60 and vis to 1 1/2 miles.
 ** Circling not authorized at night to Rwy 35R.

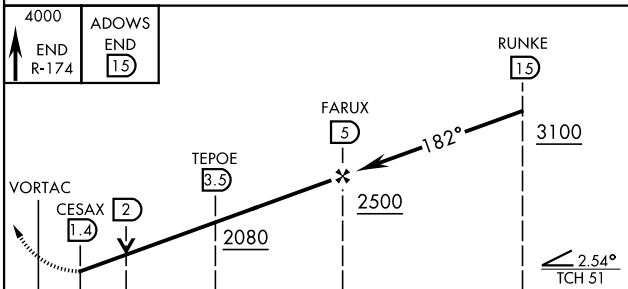


MISSED APPROACH: Climb to 4000, intercept
 END VORTAC R-174 to ADOWS and hold.

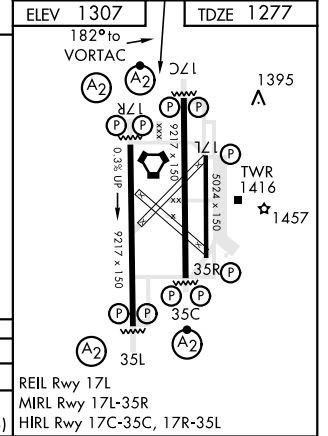
ATIS * 115.4 263.15	VANCE APP CON 125.45 388.2 EAST 126.75 346.325 WEST	VANCE TOWER * 124.05 259.1	GND CON 121.8 289.4	CLNC DEL 225.4
-------------------------------	---	--------------------------------------	-------------------------------	--------------------------



EMERG SAFE ALT 100 NM 4800



4000 END R-174	ADOWS END 15	RUNKE 15																				
<table border="1"> <thead> <tr> <th>CATEGORY</th> <th>A</th> <th>B</th> <th>C</th> <th>D</th> <th>E</th> </tr> </thead> <tbody> <tr> <td>S-17C *</td> <td>1680/40</td> <td>403 (400-34)</td> <td>1680/50</td> <td>403 (400-1)</td> <td></td> </tr> <tr> <td>** CIRCLING</td> <td>1760-1</td> <td>453 (500-1)</td> <td>1820-1 1/2 513 (600-1 1/2)</td> <td>1920-2 613 (700-2)</td> <td>2300-3 993 (1000-3)</td> </tr> </tbody> </table>					CATEGORY	A	B	C	D	E	S-17C *	1680/40	403 (400-34)	1680/50	403 (400-1)		** CIRCLING	1760-1	453 (500-1)	1820-1 1/2 513 (600-1 1/2)	1920-2 613 (700-2)	2300-3 993 (1000-3)
CATEGORY	A	B	C	D	E																	
S-17C *	1680/40	403 (400-34)	1680/50	403 (400-1)																		
** CIRCLING	1760-1	453 (500-1)	1820-1 1/2 513 (600-1 1/2)	1920-2 613 (700-2)	2300-3 993 (1000-3)																	



ENID, OKLAHOMA
Amdt 4 12SEP19

36° 20'N-97° 55'W

VANCE AFB (KEND)

VOR/DME or TACAN RWY 17C

SC-1, 25 FEB 2021 to 25 MAR 2021

SC-1, 25 FEB 2021 to 25 MAR 2021