

ENID, OKLAHOMA

# VOR/DME or TACAN RWY 35C

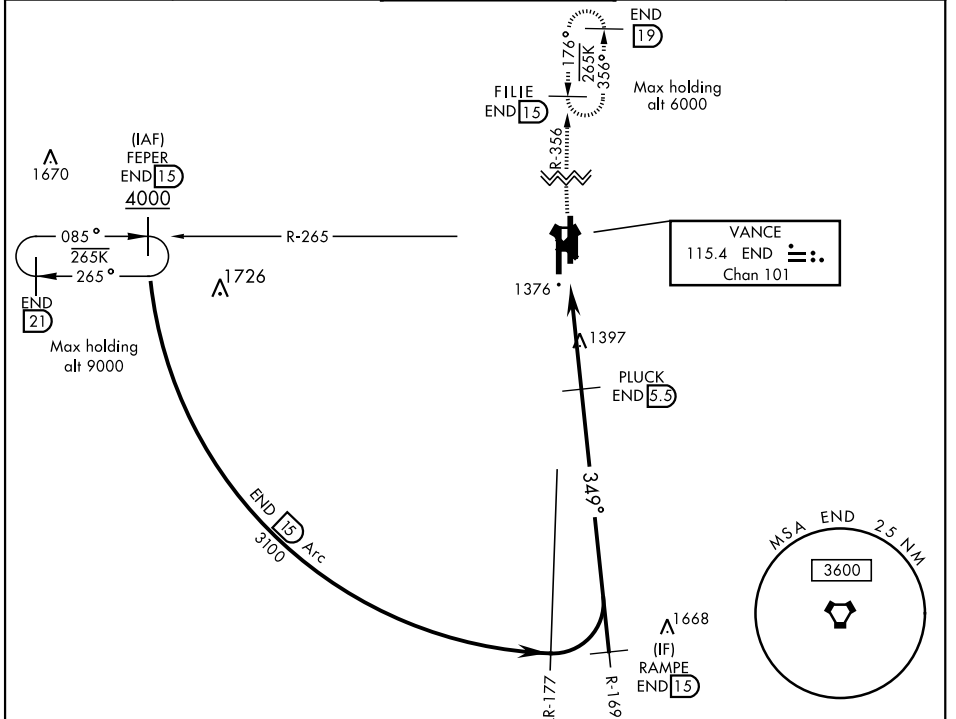
VORTAC END <b>115.4</b> Chan <b>101</b>	APCH CRS <b>349°</b>	Rwy Idg <b>9217</b> TDZE <b>1293</b> Arpt Elev <b>1307</b>	AL-135 [USAF]	VANCE AFB (KEND)
---	-------------------------	--	---------------	------------------

▼ \* When ALS inop, increase CAT AB RVR to 55 and vis to 1 mile, CAT CDE RVR to 60 and vis to 1½ miles.  
 \*\* Circling not authorized at night to Rwy 35R.

SALSF  
A2

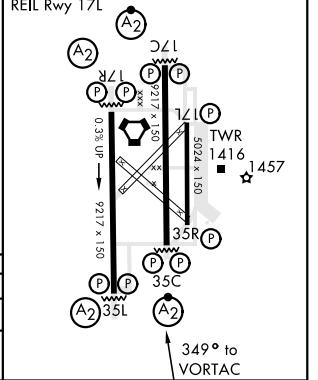
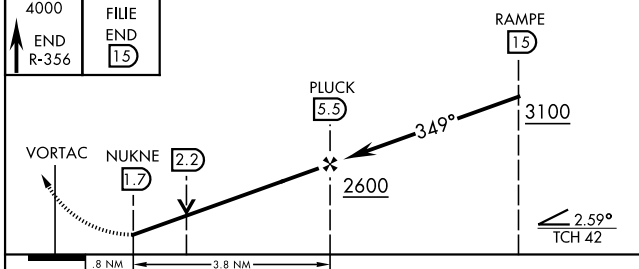

MISSED APPROACH: Climb to 4000, intercept END VORTAC R-356 to FILE and hold.

ATIS ★ <b>115.4 263.15</b>	VANCE APP CON <b>125.45 388.2 EAST</b> <b>126.75 346.325 WEST</b>	VANCE TOWER ★ <b>124.05 259.1</b>	GND CON <b>121.8 289.4</b>	CLNC DEL <b>225.4</b>
-------------------------------	---	--------------------------------------	-------------------------------	--------------------------



ELEV 1307	TDZE 1293
-----------	-----------

EMERG SAFE ALT 100 NM 4800  
 HIRL Rwy 17C-35C, 17R-35L  
 MIRL Rwy 17L-35R  
 REIL Rwy 17L



CATEGORY	A	B	C	D	E
S-35C *	1680/40 387 (400-34)		1680/45 387 (400-76)		
CIRCLING **	1760-1 453 (500-1)		1820-1½ 513 (600-1½)	1920-2 613 (700-2)	2300-3 993 (1000-3)

ENID, OKLAHOMA 36°20'N-97°55'W VANCE AFB (KEND)

Amdt 4 12SEP19

# VOR/DME or TACAN RWY 35C

SC-1, 25 FEB 2021 to 25 MAR 2021

SC-1, 25 FEB 2021 to 25 MAR 2021