

NDB EOP	APP CRS	Rwy Idg	4899
385	253°	TDZE	660
		Apt Elev	660

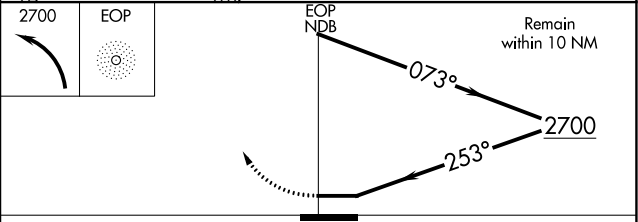
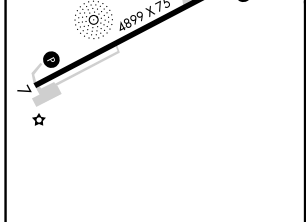
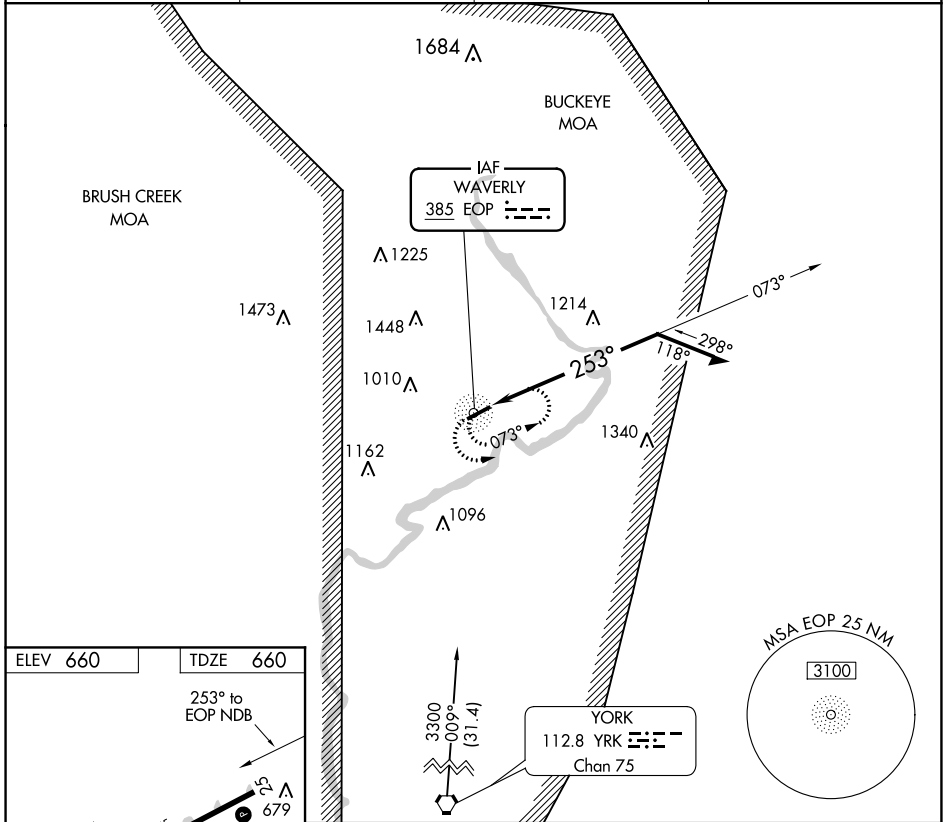
NDB RWY 25

PIKE COUNTY (EOP)

Use Greater Portsmouth Rgnl altimeter setting; if not received, use Ross County altimeter setting.
 Night landing: Rwy 7 NA.

MISSED APPROACH: Climbing left turn to 2700 in EOP NDB holding pattern.

AWOS-A 118.4	PMH AWOS-3 125.175	INDIANAPOLIS CENTER 135.575 290.5	UNICOM 123.0 (CTAF)
------------------------	------------------------------	---	-------------------------------



CATEGORY	A	B	C	D
S-25	1620-1¼ 960 (1000-1¼)	1620-1½ 960 (1000-1½)	1620-3	960 (1000-3)
CIRCLING	1620-1¼ 960 (1000-1¼)	1620-1½ 960 (1000-1½)	1620-3	960 (1000-3)

EC-2, 25 FEB 2021 to 25 MAR 2021

EC-2, 25 FEB 2021 to 25 MAR 2021