

WAAS CH 72940 W15A	APP CRS 145°	Rwy Idg TDZE Apt Elev	4002 44 45
--	------------------------	-----------------------------	---------------------------------------

RNAV (GPS) RWY 15

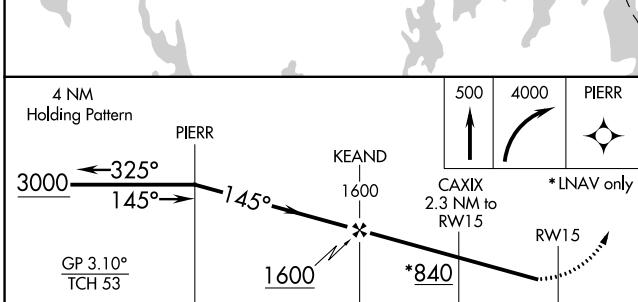
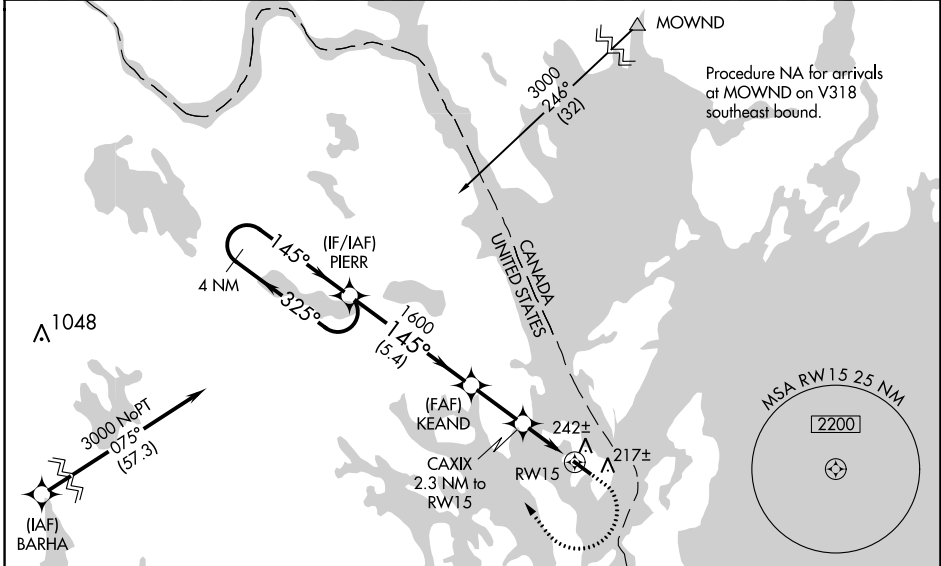
EASTPORT MUNI (EPM)

RNP APCH.

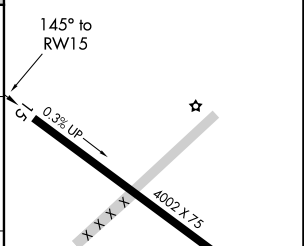
For uncompensated Baro-VNAV systems, LNAV/VNAV NA below -15°C or above 47°C. Rwy 15 helicopter visibility reduction below 1 SM NA. When local altimeter setting not received, use Hancock County-Bar Harbor altimeter setting: increase LPV DA to 462 feet and all visibilities $\frac{3}{8}$ SM; increase LNAV/VNAV DA to 565 feet and all visibilities $\frac{1}{2}$ SM; increase all MDA 160 feet and LNAV visibility Cat C and D $\frac{3}{8}$ SM and Circling visibility Cat C and D $\frac{1}{2}$ SM. Baro-VNAV NA when using Hancock County-Bar Harbor altimeter setting. Straight-in Rwy 15 NA at night, Circling Rwy 15 NA at night.

MISSED APPROACH:
Climb to 500 then climbing right turn to 4000 direct PIERR and hold, continue climb-in-hold to 4000.

AWOS-AV 122.8	BOSTON CENTER 124.25 290.5	UNICOM 122.8 (CTAF)
-------------------------	--------------------------------------	-------------------------------



ELEV 45	TDZE 44
---------	---------



CATEGORY	A	B	C	D
LPV DA	309-1		265 (300-1)	
LNAV/VNAV DA	412-1¼		368 (400-1¼)	
LNAV MDA	500-1	456 (500-1)	500-1¾	456 (500-1¾)
C CIRCLING	580-1	535 (600-1)	580-1½ 535 (600-1½)	720-2¼ 675 (700-2¼)

MIRL Rwy 15-33
REIL Rws 15 and 33

NE-1, 25 FEB 2021 to 25 MAR 2021

NE-1, 25 FEB 2021 to 25 MAR 2021