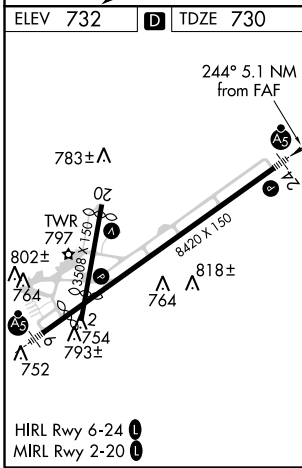
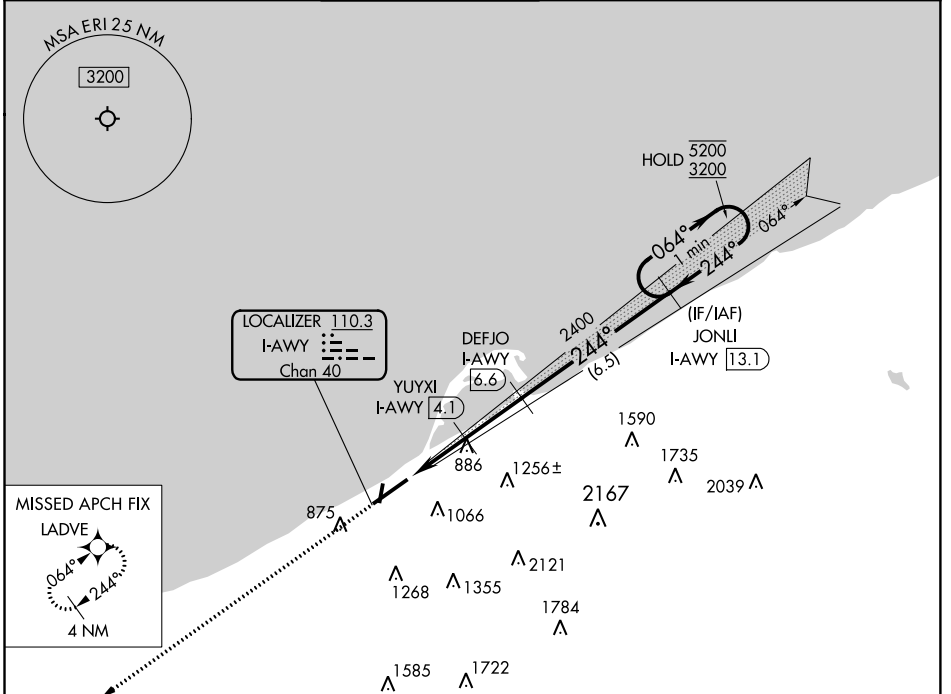


LOC/DME I-AWY <b>110.3</b> Chan <b>40</b>	APP CRS <b>244°</b>	Rwy Idg <b>7501</b> TDZE <b>730</b> Apt Elev <b>732</b>
---	------------------------	---

# ILS or LOC RWY 24

ERIE INTL/TOM RIDGE FIELD (ERI)

RADAR required for procedure entry. RNAV 1-GPS and DME required.			MALSRL	MISSED APPROACH: Climb to 3000 direct LADVE and hold (GPS required).	
Circling Rwy 2, 20 NA at night. Circling NA southeast of Rwy 6-24.					
ATIS <b>120.35</b>	BUFFALO APP CON* <b>121.0 257.8</b>	ERIE TOWER* <b>118.1</b> (CTAF) <b>257.8</b>	GND CON <b>121.9</b>	CLNC DEL <b>126.8</b>	UNICOM <b>122.95</b>



ELEV <b>732</b>	<b>D</b>	TDZE <b>730</b>		
244° 5.1 NM from FAF 3000 LADVE * LOC only.				
One Minute Holding Pattern JONLI I-AWY <b>13.1</b> DEFJO I-AWY <b>6.6</b> YUYXI I-AWY <b>4.1</b> * I-AWY <b>2.5</b> I-AWY <b>1.5</b> 2400 2400 2400 2400 5200 3200 GS 3.00° TCH 55				
1 NM 1.6 NM 2.5 NM 6.5 NM				
CATEGORY	A	B	C	D
S-ILS 24	942/24		212 (300-1/2)	
S-LOC 24	1120/24	390 (400-1/2)	1120/35	390 (400-3/4)
<b>C</b> CIRCLING	1160-1 428 (500-1)	1200-1 468 (500-1)	1200-1/2 468 (500-1/2)	1340-2 608 (700-2)

NE-4, 25 FEB 2021 to 25 MAR 2021

NE-4, 25 FEB 2021 to 25 MAR 2021