

LOC/DME I-ERI <b>110.3</b> Chan 40	APP CRS <b>064°</b>	Rwy Idg <b>7501</b> TDZE <b>732</b> Apt Elev <b>732</b>
------------------------------------------	------------------------	---------------------------------------------------------------

# ILS or LOC RWY 6

ERIE INTL/TOM RIDGE FIELD (ERI)

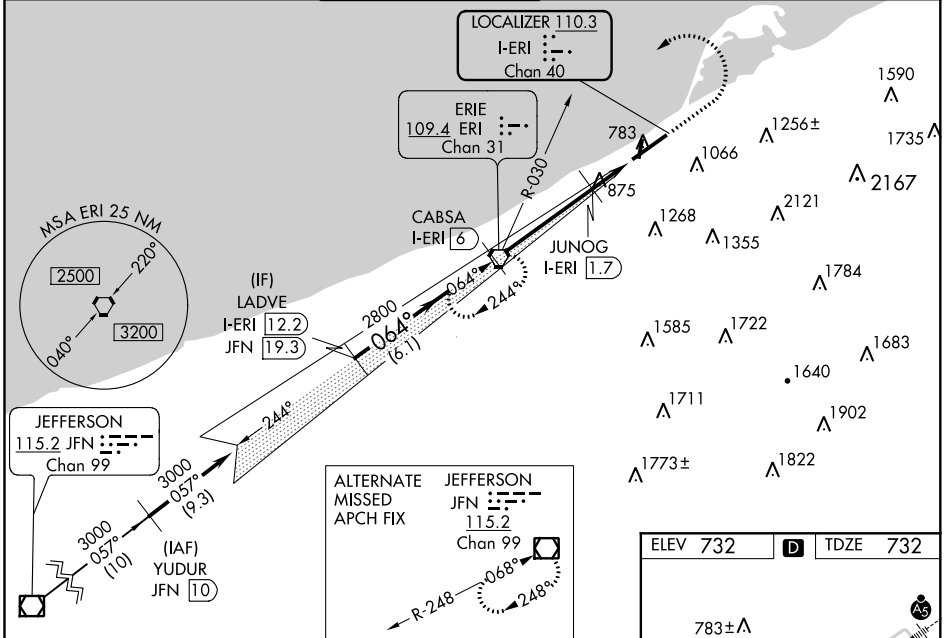
**RADAR** required for procedure entry. DME required.

**⚠** Circling to Rwy 2, 20 NA at night. Circling NA SE of Rwy 6-24. Autopilot coupled approach NA below 1580. VDP NA with Ashtabula, OH altimeter setting. For inop MALS, when using Ashtabula, OH altimeter setting, increase S-ILS 6 all Cats visibility to RVR 6000, S-LOC 6 Cats C/D visibility to 1 1/2 SM. For inop MALS, increase S-LOC 6 Cats C/D visibility to RVR 6000. When local altimeter setting not received, use Ashtabula, OH altimeter setting and increase DA to 1078 and all MDA 100 feet, increase ILS all Cats to RVR 3000 and increase S-LOC 6 Cats C/D visibility to RVR 5500 and Circling Cat D visibility to 2 1/4 SM.

**MALS**

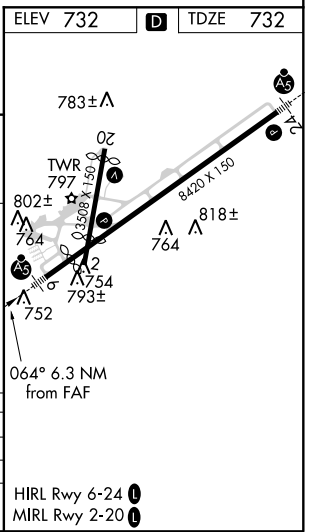
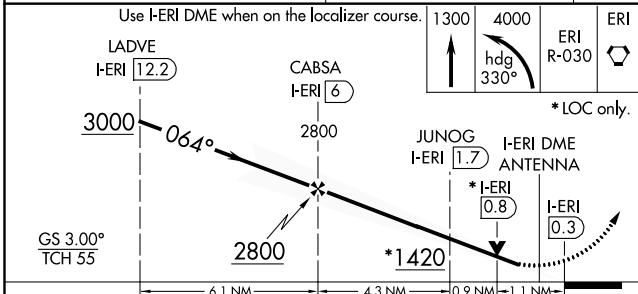
**MISSED APPROACH:**  
Climbo 1300 then climbing left turn to 4000 on heading 330° and on ERI VORTAC R-030 direct ERI VORTAC and hold.

ATIS <b>120.35</b>	BUFFALO APP CON* <b>121.0 257.8</b>	ERIE TOWER* <b>118.1</b> (CTAF) <b>0 257.8</b>	GND CON <b>121.9</b>	CLNC DEL <b>126.8</b>	UNICOM <b>122.95</b>
-----------------------	----------------------------------------	---------------------------------------------------	-------------------------	--------------------------	-------------------------



NE-4, 25 FEB 2021 to 25 MAR 2021

NE-4, 25 FEB 2021 to 25 MAR 2021



CATEGORY	A	B	C	D
S-ILS 6	982/24 250 (300-1/2)			
S-LOC 6	1140/24	408 (500-1/2)	1140/40	408 (500-3/4)
<b>C</b> CIRCLING	1160-1 428 (500-1)	1200-1 468 (500-1)	1200-1 1/2 468 (500-1 1/2)	1340-2 608 (700-2)