

WAAS CH 86812 W24A	APP CRS 245°	Rwy Idg 7501 TDZE 730 Apt Elev 732
--	------------------------	---

RNAV (GPS) RWY 24

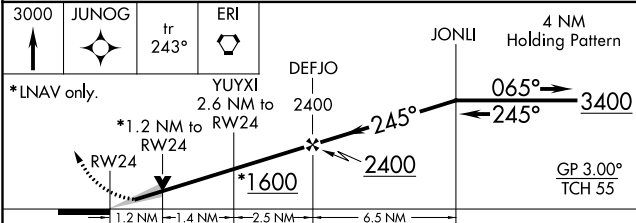
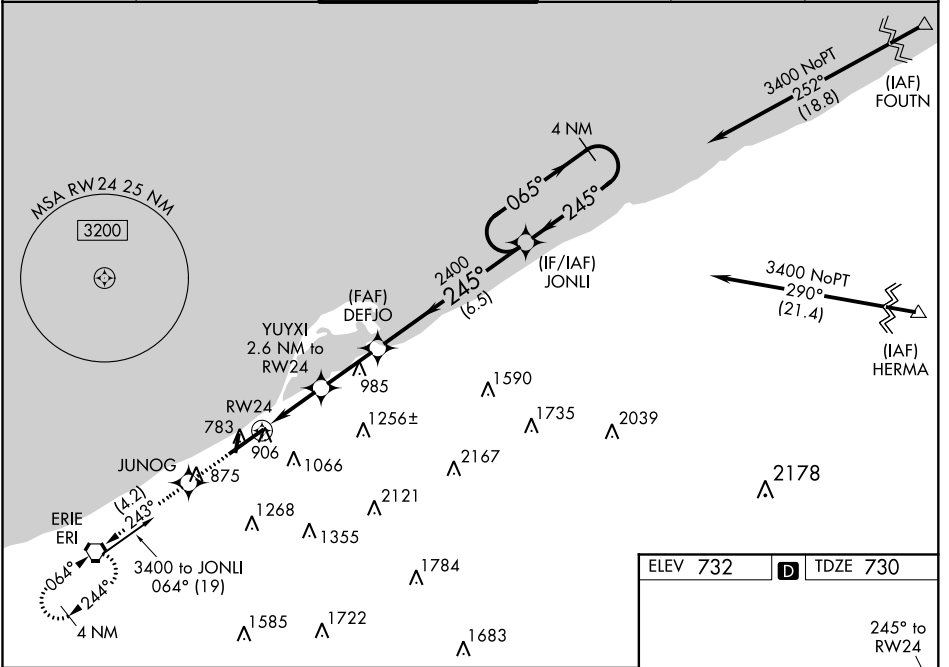
ERIE INTL/TOM RIDGE FIELD (ERI)

▼ Night landing: Rwy 2, 20 NA. Baro-VNAV NA when using Ashtabula, OH altimeter setting. For uncompensated Baro-VNAV systems, LNAV/VNAV NA below -19°C (-2°F) or above 54°C (130°F). DME/DME RNP-0.3 NA. VDP NA with Ashtabula, OH altimeter setting. When local altimeter setting not received, use Ashtabula, OH altimeter setting and increase all DA 96 feet, all MDA 100 feet and increase LPV all Cats visibility 1/8 mile, LNAV/VNAV all Cats visibility 3/8 mile, LNAV Cats C and D visibility 1/4 mile and Circling Cat C and D visibility 1/2 mile. For inop MALS/R when using Ashtabula, OH altimeter setting, increase LPV all Cats visibility to 1/8 mile.

MALS/R

MISSED APPROACH:
Climb to 3000 direct JUNOG and on track 243° to ERI VORTAC and hold.

ATIS 120.35	BUFFALO APP CON* 121.0 257.8	ERIE TOWER* 118.1 (CTAF) 0 257.8	GND CON 121.9	CLNC DEL 126.8	UNICOM 122.95
-----------------------	--	--	-------------------------	--------------------------	-------------------------



ELEV 732 TDZE 730

783±

TWR 797

802±

764

03500 X 1500

8420 X 150

764

818±

752

754

793±

245° to RWY 24

MALS/R

HIRL Rwy 6-24

MIRL Rwy 2-20

CATEGORY	A	B	C	D
LPV DA		987-1/2	257 (300-1/2)	
LNAV/VNAV DA		1073-5/8	343 (400-3/4)	
LNAV MDA	1160-1/2	430 (500-1/2)	1160-3/4	430 (500-3/4)
CIRCLING	1320-1 588 (600-1)	1340-1 608 (700-1)	1380-1 3/4 648 (700-1 3/4)	1380-2 648 (700-2)

NE-4, 25 FEB 2021 to 25 MAR 2021

NE-4, 25 FEB 2021 to 25 MAR 2021