

WAAS CH 77612 W06A	APP CRS 064°	Rwy Idg 7501 TDZE 732 Apt Elev 732
--	------------------------	---

RNAV (GPS) RWY 6

ERIE INTL/TOM RIDGE FIELD (ERI)

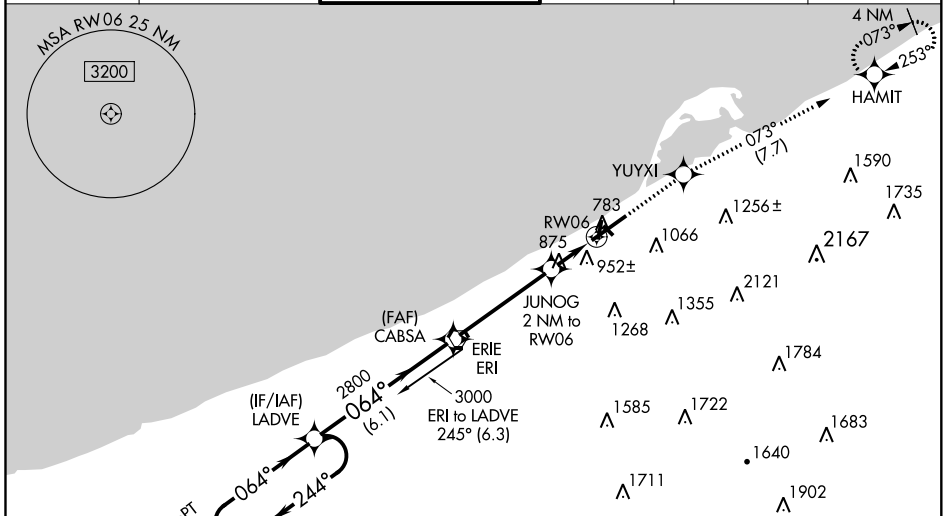
RNAV 1-GPS or RADAR required for procedure entry. RNP APCH.

⚠ Baro-VNAV NA when using Ashtabula, OH altimeter setting. For uncompensated Baro-VNAV systems, LNAV/VNAV NA below -19°C (-2°F) or above 54°C (130°F).
⚠ Circling Rwy 2, 20 NA at night. Rwy 2, 20 helicopter visibility reduction below 1 SM NA.
 Rwy 6 helicopter visibility reduction below RVR 4000 NA. VDP NA with Ashtabula, OH altimeter setting. When local altimeter setting not received, use Ashtabula, OH altimeter setting and increase all DA 96 feet, all MDA 100 feet and increase LNAV/VNAV all Cats visibility to 1 3/8 SM, LNAV Cats C and D visibility to 1 1/4 SM, Circling Cat C visibility to 2 1/4 SM and Cat D visibility to 2 1/2 SM. For inop MALS, when using Ashtabula, OH altimeter setting, increase LPV all Cats visibility to RVR 6000, LNAV/VNAV all Cats visibility to 2 1/4 SM and LNAV Cats A and B visibility to RVR 5000.

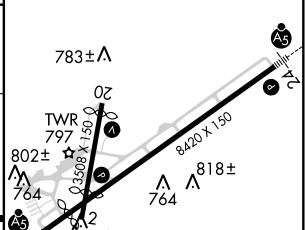
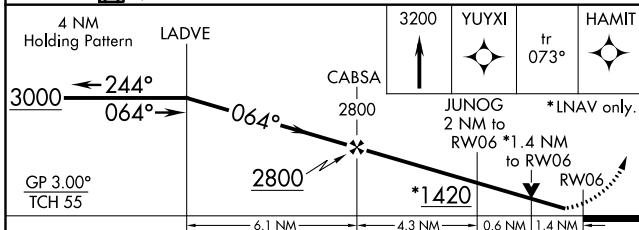
MALS

MISSED APPROACH:
Climb to 3200 direct YUYXI and on track 073° to HAMIT and hold.

ATIS 120.35	BUFFALO APP CON* 121.0 257.8	ERIE TOWER* 118.1 (CTAF) 0 257.8	GND CON 121.9	CLNC DEL 126.8	UNICOM 122.95
-----------------------	--	--	-------------------------	--------------------------	-------------------------



ELEV 732	D TDZE 732
----------	-------------------



CATEGORY	A	B	C	D
LPV DA		982/40	250 (300-3/4)	
LNAV/VNAV DA		1255/60	523 (600-1 1/4)	
LNAV MDA	1220/40	488 (500-3/4)	1220/50	488 (500-1)
CIRCLING	1320-1 588 (600-1)	1340-1 608 (700-1)	1380-1 3/4 648 (700-1 3/4)	1380-2 648 (700-2)

HIRL Rwy 6-24 **⓪**
MIRL Rwy 2-20 **⓪**

NE-4, 25 FEB 2021 to 25 MAR 2021

NE-4, 25 FEB 2021 to 25 MAR 2021