

WAAS CH 77617 W09A	APP CRS 090°	Rwy Idg TDZE Apt Elev	5999 96 112
--	------------------------	-----------------------------	--

RNAV (GPS) RWY 9

ESLER RGNL (E/SF)

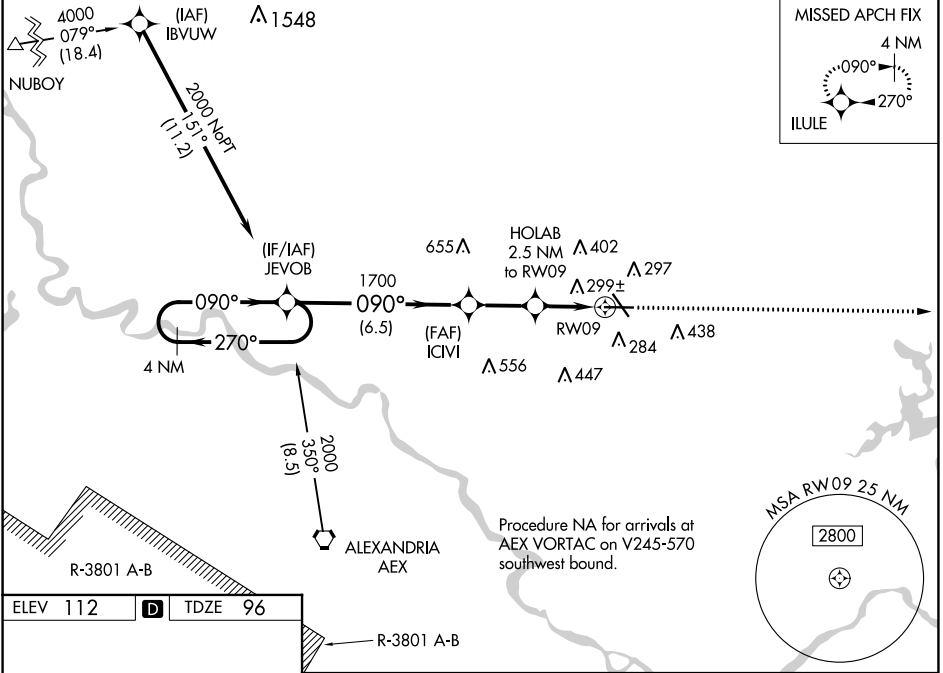
⚠ When VGSI inop, Circling Rwy 14/32 NA at night. Baro-VNAV and VDP NA when using Alexandria Intl altimeter setting. For uncompensated Baro-VNAV systems, LNAV/VNAV NA below -6°C (22°F) or above 54°C (130°F), DME/DME RNP-0.3 NA. When local altimeter setting not received, use Alexandria Intl altimeter setting and increase all DA 35 feet and all MDA 40 feet; increase LNAV/VNAV all Cats visibility 1/8 mile.

MISSED APPROACH: Climb to 3000 direct ILULE and hold.

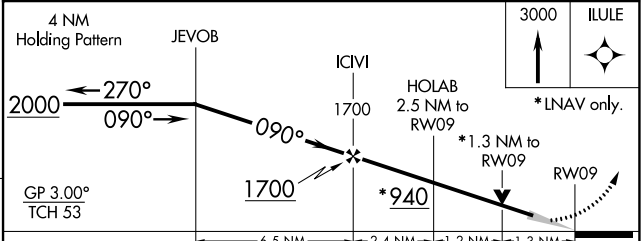
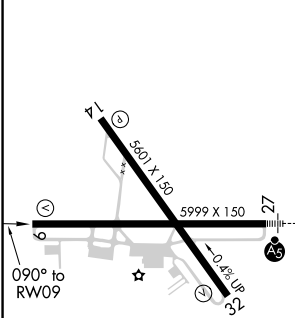
ESF ASOS
119.425

POLK APP CON
125.4 254.8

UNICOM
122.8 (CTAF) 0



ELEV 112 **D** TDZE 96



CATEGORY	A	B	C	D
LPV DA		296-3/4	200 (200-3/4)	
LNAV/VNAV DA		609-13/4	513 (500-13/4)	
LNAV MDA	560-1	464 (500-1)	560-13/8	464 (500-13/8)
CIRCLING	600-1	488 (500-1)	600-11/2	740-2 628 (700-2)

REIL Rwy 9, 14 and 32 **Ⓛ**
MIRL Rwy 14-32 **Ⓛ**
HIRL Rwy 9-27 **Ⓛ**

SC-4, 25 FEB 2021 to 25 MAR 2021

SC-4, 25 FEB 2021 to 25 MAR 2021