

WAAS CH 86730 W34A	APP CRS 339°	Rwy Idg TDZE Apt Elev	3298 1023 1023
--	------------------------	-----------------------------	---

RNAV (GPS) RWY 34

WHEATON MUNI (ETH)

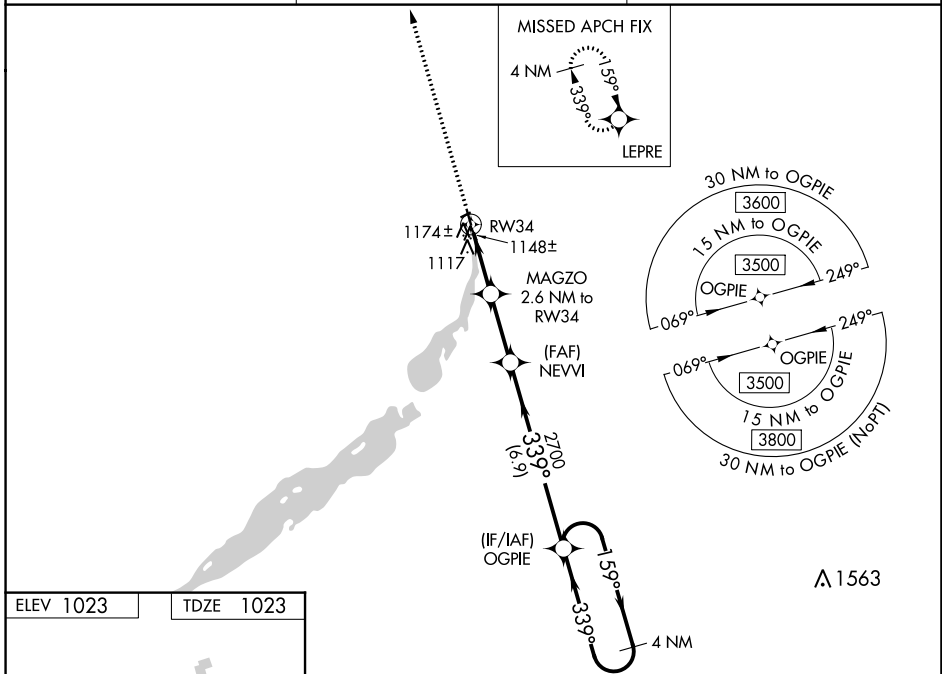
⚠ When VGSI inop, Straight-in/Circling Rwy 34 procedure NA at night.
DME/DME RNP-0.3 NA. Visibility reduction by helicopters NA.
When local altimeter setting not received, use Wahpeton/Harry Stern altimeter setting and increase all MDA 80 feet and LP Cat C and LNAV Cat C visibility to 1 3/8 mile.

MISSED APPROACH: Climb to 3500 direct LEPRE and hold.

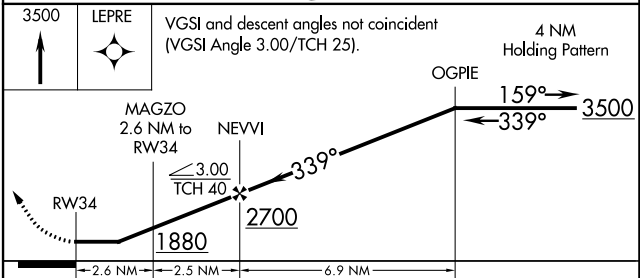
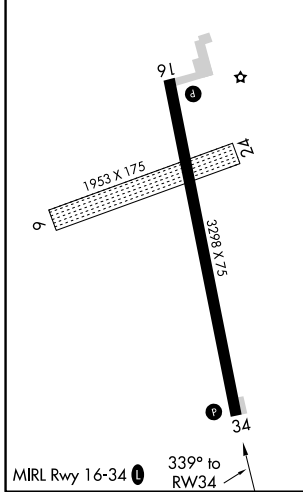
AWOS-3
118.775

MINNEAPOLIS CENTER
126.1 269.2

UNICOM
122.8 (CTAF) 0



ELEV 1023 TDZE 1023



CATEGORY	A	B	C	D
LP MDA	1400-1 377 (400-1)			NA
LNAV MDA	1440-1	417 (500-1)	1440-1 1/8 417 (500-1 1/8)	NA
CIRCLING	1480-1	457 (500-1)	1480-1 1/2 457 (500-1 1/2)	NA

NC-1, 25 FEB 2021 to 25 MAR 2021

NC-1, 25 FEB 2021 to 25 MAR 2021