

RNAV (GPS) RWY 35

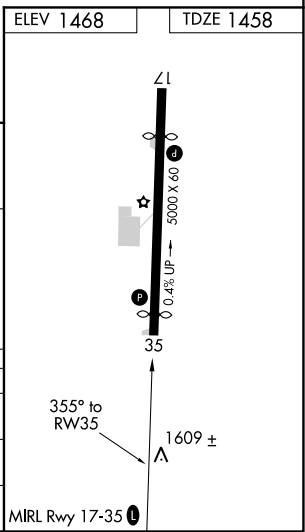
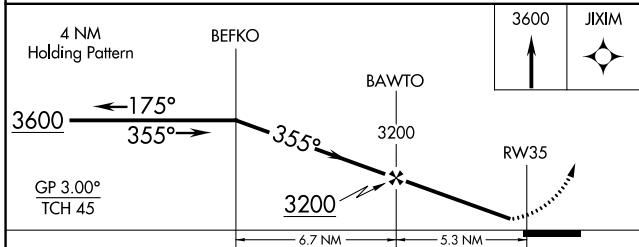
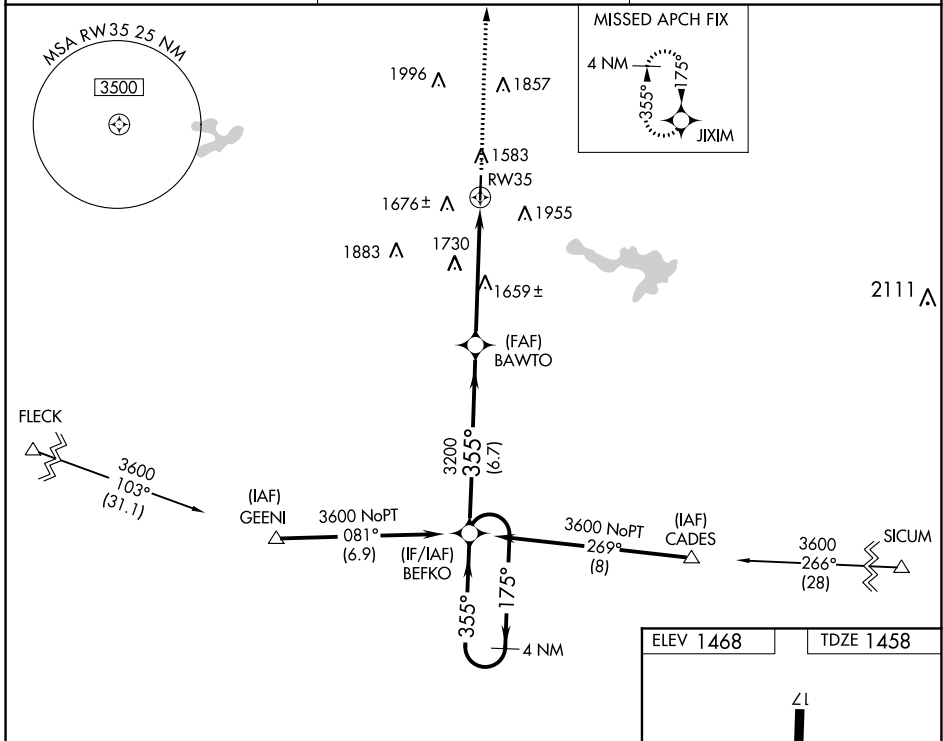
EASTLAND MUNI (ETN)

APP CRS 355°	Rwy Idg TDZE Apt Elev	4580 1458 1468
------------------------	-----------------------------	---

⚠ For uncompensated Baro-VNAV systems, LNAV/VNAV NA below -22°C (-7°F) or above 54°C (130°F). DME/DME RNP-0.3 NA. When local altimeter setting not received, use Breckenridge altimeter setting. Baro-VNAV NA when using Breckenridge altimeter setting. Circling Rwy 17 NA at night. Helicopter visibility reduction below 3/4 SM NA.

MISSED APPROACH:
Climb to 3600 direct JIXIM and hold.

AWOS-3PT 118.45	FORT WORTH CENTER 127.15 314.0	UNICOM 122.8 (CTAF)
---------------------------	--	-------------------------------



CATEGORY	A	B	C	D
LNAV/DA/VNAV	1777-1 319 (400-1)			NA
LNAV MDA	1980-1	522 (600-1)	1980-1½ 522 (600-1½)	NA
CIRCLING	2120-1	652 (700-1)	2300-2½ 832 (900-2½)	NA

SC-2, 25 FEB 2021 to 25 MAR 2021

SC-2, 25 FEB 2021 to 25 MAR 2021