

WAAS CH 72807 W14A	APP CRS 143°	Rwy Idg 4600 TDZE 1142 Apt Elev 1145
--	------------------------	---

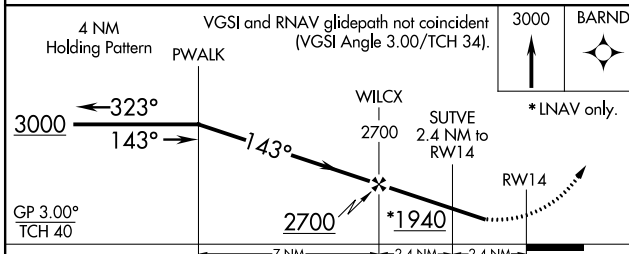
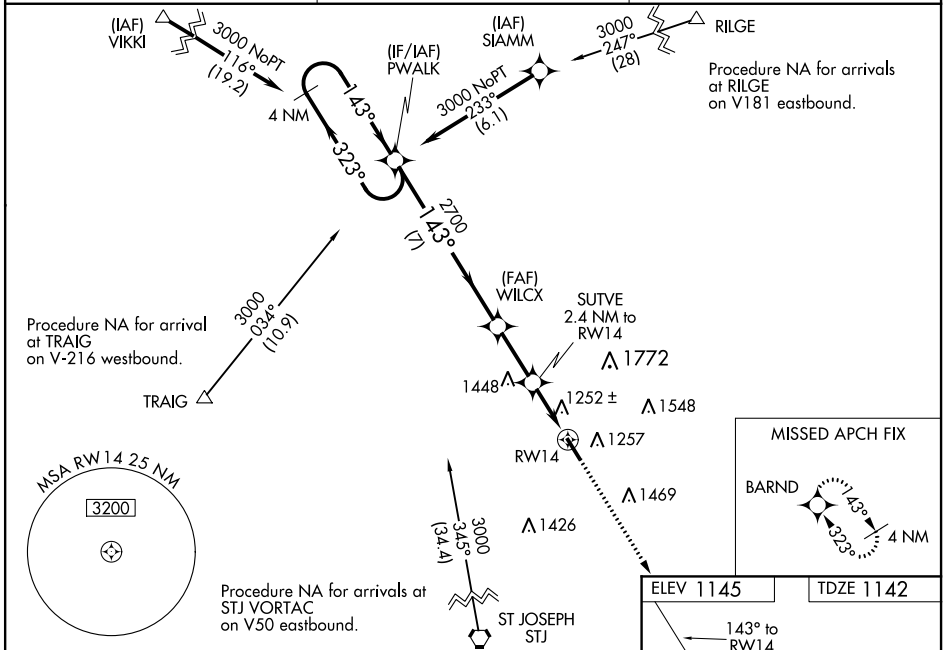
RNAV (GPS) RWY 14

NORTHWEST MISSOURI RGNL (EVU)

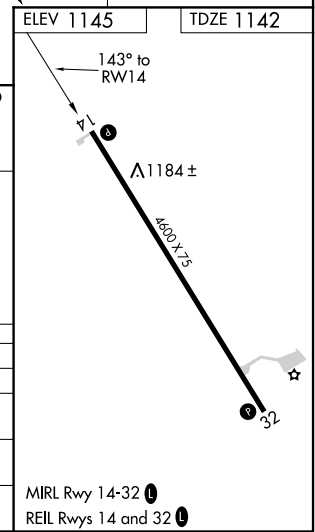
NA Baro-VNAV NA when using St. Joseph altimeter setting. For uncompensated Baro-VNAV systems, LNAV/VNAV NA below -17°C (2°F) or above 54°C (130°F). DME/DME RNP-0.3 NA. Visibility reduction by helicopters NA. When local altimeter setting not received, use St. Joseph altimeter setting and increase LPV DA to 1513 feet, LNAV/VNAV DA to 1678 feet, and all MDA 140 feet, increase LPV visibility ½ mile all Cats, LNAV/VNAV visibility ½ mile all Cats and LNAV Cat C ¾ mile. Circling NA east of Rwy 14-32. When VGSI inop, Straight-in/Circling Rwy 14 procedure NA at night.

MISSED APPROACH:
Climb to 3000 direct BARND and hold.

AWOS-3PT 118.225	MINNEAPOLIS CENTER 119.6 290.4	UNICOM 122.8 (CTAF) 0
----------------------------	--	---------------------------------



CATEGORY	A	B	C	D
LPV DA	1392-1	250 (300-1)		NA
LNAV/VNAV DA	1557-1 3/8	415 (500-1 3/8)		NA
LNAV MDA	1520-1	378 (400-1)	1520-1 1/8 378 (400-1 1/8)	NA
CIRCLING	1540-1 395 (400-1)	1600-1 455 (500-1)	1600-1 1/2 455 (500-1 1/2)	NA



NC-3, 25 FEB 2021 to 25 MAR 2021

NC-3, 25 FEB 2021 to 25 MAR 2021