

WAAS CH 73022 W32A	APP CRS 323°	Rwy Idg 4600 TDZE 1145 Apt Elev 1145
--	------------------------	---

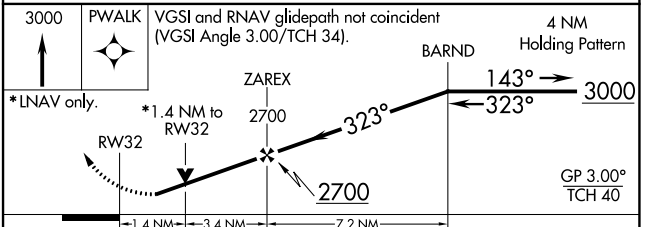
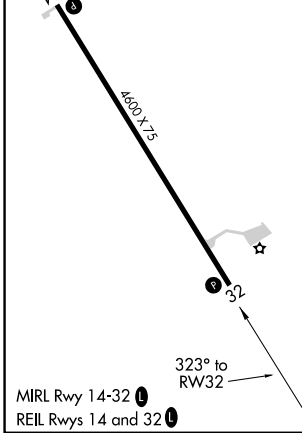
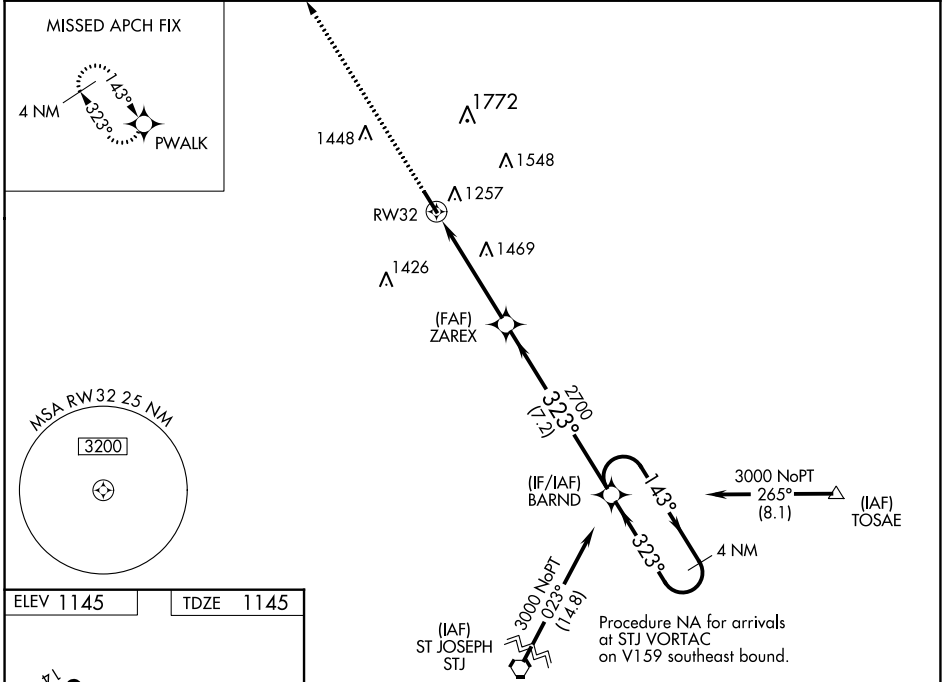
RNAV (GPS) RWY 32

NORTHWEST MISSOURI RGNL (EVU)

▽ Baro-VNAV NA when using St Joseph altimeter setting. For uncompensated Baro-VNAV systems, LNAV/VNAV NA below -17°C (2°F) or above 54°C (130°F). DME/DME RNP-0.3 NA. Helicopter visibility reduction below 3/4 SM NA. When local altimeter setting not received, use St Joseph altimeter setting: increase LPV and LNAV/VNAV DA to 1520 feet and all Cats visibility 3/8 mile; increase all MDA 140 feet, LNAV Cat C visibility 3/8 mile and Circling Cat C visibility 1/4 mile. VDP NA when using St Joseph altimeter setting. Circling NA east of Rwy 14-32.

▲NA MISSED APPROACH: Climb to 3000 direct PWALK and hold.

AWOS-3PT 118.225	MINNEAPOLIS CENTER 119.6 290.4	UNICOM 122.8 (CTAF) ①
----------------------------	--	---------------------------------



CATEGORY	A	B	C	D
LPV DA	1395-7/8	250 (300-7/8)		NA
LNAV/VNAV DA	1395-7/8	250 (300-7/8)		NA
LNAV MDA	1620-1	475 (500-1)	1620-1 3/8 475 (500-1 3/8)	NA
CIRCLING	1620-1	475 (500-1)	1620-1 1/2 475 (500-1 1/2)	NA

NC-3, 25 FEB 2021 to 25 MAR 2021

NC-3, 25 FEB 2021 to 25 MAR 2021